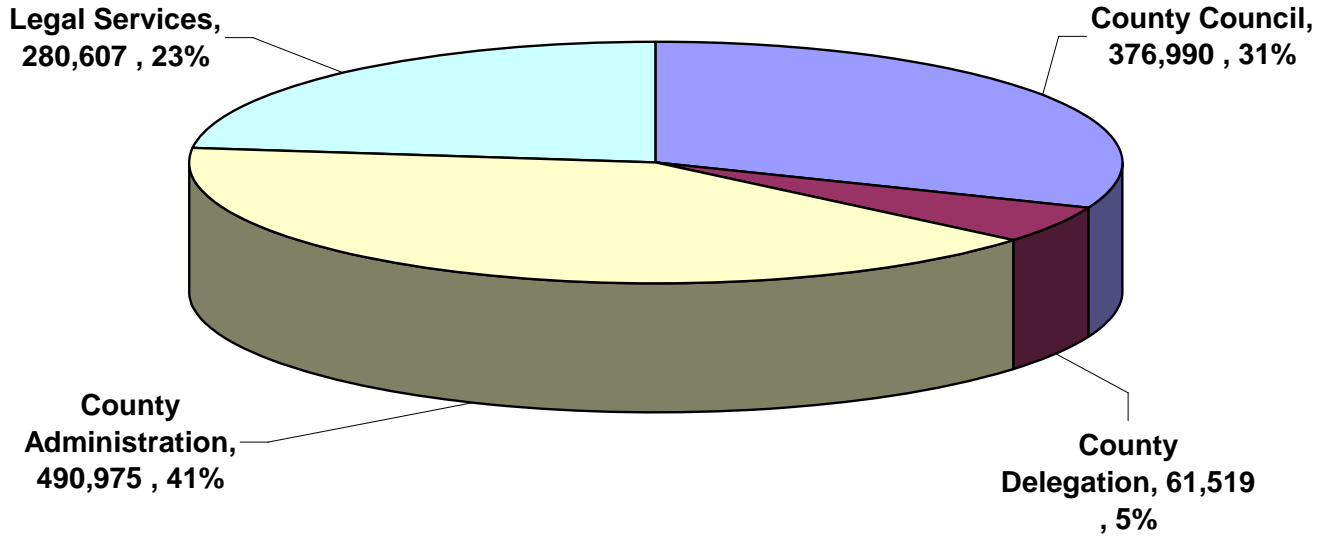


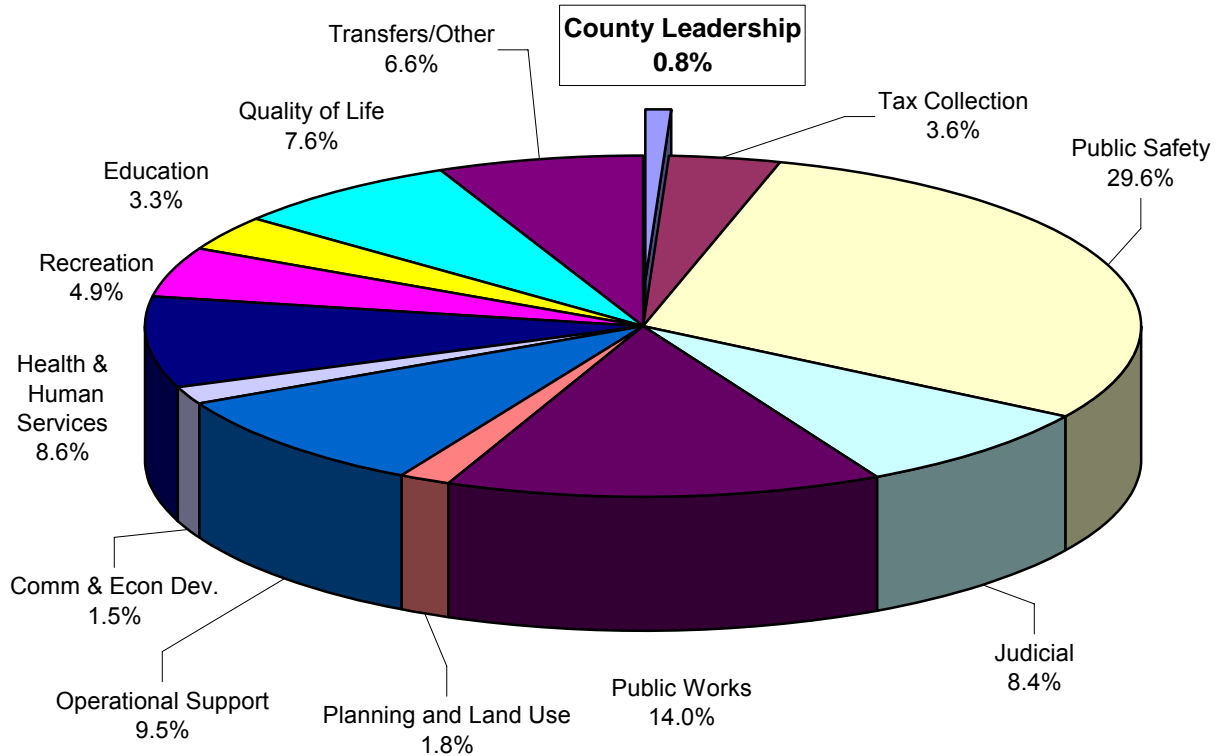
COUNTY LEADERSHIP

FY 2008/09 ADOPTED OPERATING BUDGET \$1,210,091



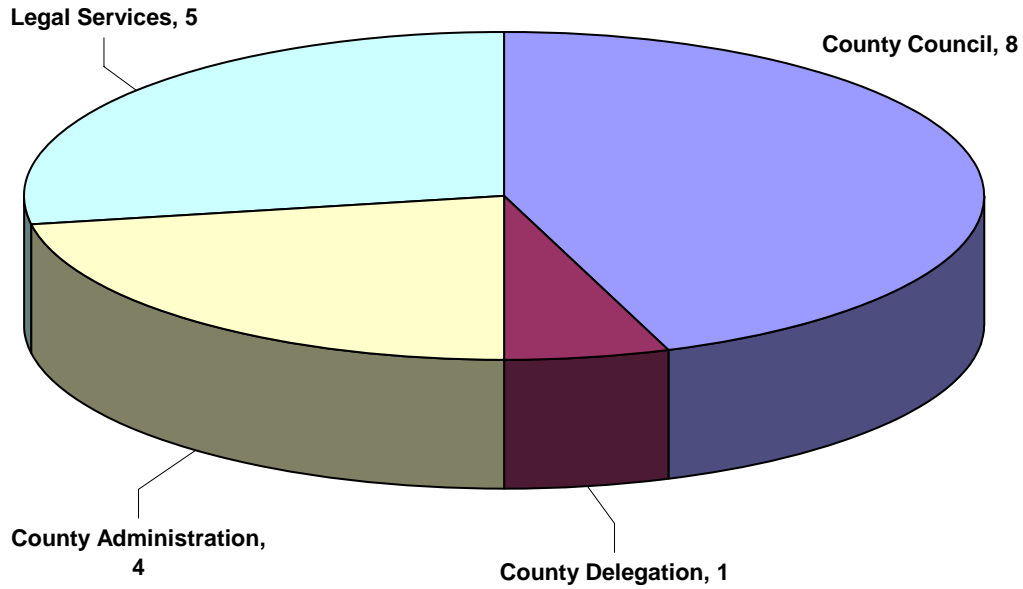
COUNTY LEADERSHIP SUMMARY								
FUND	FUNDING SOURCE(S)	DEPT NO.	FY 04/05 ACTUAL	FY 05/06 ACTUAL	FY 06/07 ACTUAL	FY 07/08 BUDGET	FY 08/09 BUDGET	\$ INC/DEC FY 09 - 08
1	General Fund		\$968,549	\$1,027,363	\$1,082,688	\$1,198,430	\$1,210,091	\$11,661
FUND	DEPARTMENT							
1	County Council	9103	290,920	312,654	290,809	379,880	376,990	(2,890)
1	County Delegation	9100	49,702	52,645	56,853	59,350	61,519	2,169
1	County Administration	9110	374,662	398,318	445,956	487,070	490,975	3,905
1	Legal Services	9113	253,265	263,746	289,070	272,130	280,607	8,477
TOTAL, COUNTY LEADERSHIP			\$968,549	\$1,027,363	\$1,082,688	\$1,198,430	\$1,210,091	\$11,661

County Leadership Percentage of Total County Budget \$1,210,091



TOTAL FY 2008/09 ADOPTED OPERATING BUDGET: \$158,277,644					
CATEGORY/FUNCTION	FY 2008/09 BUDGET	CATEGORY/FUNCTION	FY 2008/09 BUDGET	CATEGORY/FUNCTION	FY 2008/09 BUDGET
County Leadership	\$1,210,091	Planning and Land Use	\$2,780,214	Recreation	\$7,677,873
Tax Collection	\$5,736,233	Operational Support	\$14,989,869	Education	\$5,158,170
Public Safety	\$46,777,523	Comm & Econ Dev.	\$2,436,302	Quality of Life	\$11,996,915
Judicial	\$13,243,627	Health & Human Services	\$13,660,758	Transfers/Other	\$10,422,693
Public Works	\$22,187,378				

Authorized County Leadership Personnel Summary



COUNTY LEADERSHIP PERSONNEL SUMMARY								
FUND	FUNDING SOURCE(S)	DEPT NO.	FY 04/05 ACTUAL	FY 05/06 ACTUAL	FY 06/07 ACTUAL	FY 07/08 BUDGET	FY 08/09 BUDGET	INC/DEC FY 09 - 08
1	General Fund		20	20	18	18	18	0
FUND	DEPARTMENT							
1	County Council	9103	8	8	8	8	8	0
1	County Delegation	9100	1	1	1	1	1	0
1	County Administration	9110	5	5	4	4	4	0
1	Legal Services	9113	6	6	5	5	5	0
TOTAL, COUNTY LEADERSHIP			20	20	18	18	18	0

**SPARTANBURG COUNTY, SOUTH CAROLINA
FY 2008/09 ADOPTED OPERATING BUDGET**

PAGE LEFT BLANK INTENTIONALLY