

Caldwell Drive Extension

Requesting Department/Division: Public Works/Roads and Bridges
 Project Manager/Contact: Mike Garrett

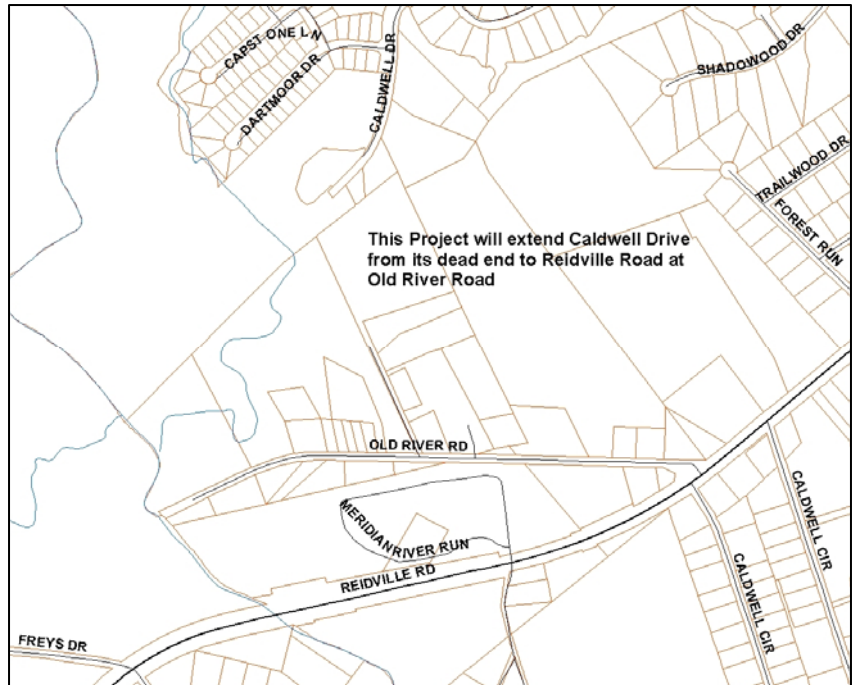
Estimated Start Date: July 2008
 Est. Completion Date: June 2009

Project Category: New Construction

Project Status: New Project Request
 Project Number: RI0009

Project Description, Justification and Location

This project will extend Caldwell Drive from its dead end to Reidville Road at Old River Road approximately 3,000 feet. The County has entered into a development agreement with a private developer who will develop the adjacent property into an upscale commercial and residential mixed-use complex. The developer will construct the street extension as part of the development project. The County has agreed to pay fifty percent (50%) of the road construction costs not to exceed \$550,000.



Benefits to Residents, Visitors, Businesses, or County Employees

The road will provide improved access to residents on Reidville Road and provide secondary road access for emergency vehicles to service the area.

Impact on Annual Operating Budget

There will be no significant maintenance costs associated with this project from FY 2009-13.

Project Status (as of June 1, 2008)

New project request, fully funded in FY 2008/09.

Project Expenditures and Funding Sources

| PROJECT | TOTAL PROJECT COST | COMMITTED FUNDING | FY 2008/09 | FY 2009/10 | FY 2010/11 | FY 2011/12 | FY 2012/13 | FY 2009-13 TOTAL |
|---------------------------------|--------------------|-------------------|----------------|------------|------------|------------|------------|------------------|
| Caldwell Drive Extension | | | | | | | | |
| <u>Expenditures</u> | | | | | | | | |
| Planning/Design/Engineering | 0 | 0 | 0 | 0 | 0 | 0 | 0 | 0 |
| Land Acquisition/Right-of-Way | 0 | 0 | 0 | 0 | 0 | 0 | 0 | 0 |
| Construction/Improvements | 550,000 | 0 | 550,000 | 0 | 0 | 0 | 0 | 550,000 |
| Capital Materials/Equipment | 0 | 0 | 0 | 0 | 0 | 0 | 0 | 0 |
| Technology Expenditures | 0 | 0 | 0 | 0 | 0 | 0 | 0 | 0 |
| Other | 0 | 0 | 0 | 0 | 0 | 0 | 0 | 0 |
| Total Expenditures | 550,000 | 0 | 550,000 | 0 | 0 | 0 | 0 | 550,000 |
| <u>Revenues</u> | | | | | | | | |
| Road Maintenance Fee | 550,000 | 0 | 550,000 | 0 | 0 | 0 | 0 | 550,000 |
| Total Revenues | 550,000 | 0 | 550,000 | 0 | 0 | 0 | 0 | 550,000 |