

Convenience Center 16 Expansion

Requesting Department/Division: Public Works/Solid Waste
 Project Manager/Contact: Mike Garrett/Jason Weaver

Estimated Start Date: July 2007
 Est. Completion Date: August 2008

Project Category: New Construction

Project Status: Active Project
 Project Number: SW0001

Project Description, Justification and Location

Construction and expansion of the Station 16 Convenience Center located at the entrance of the Wellford Landfill. This expansion will allow for citizens to dispose of household waste items without entering the landfill. The convenience center will include a recycling station. Construction includes eleven (11) concrete bunkers that will house roll off cans used for disposal. A 20' X 20' operations building will also be constructed. This project was fully funded in the FY 2008-12 Capital Improvement Plan.

Benefits to Residents, Visitors, Businesses, or County Employees

Residents will no longer have to enter the landfill where large commercial vehicles are present. It also allows for disposal of all household items at one location. County employees will be able to control more efficiently waste tonnages that enter the landfill.

Impact on Annual Operating Budget

Staffing for the new convenience center will be provided by existing Solid Waste personnel.

Project Status (as of June 1, 2008)

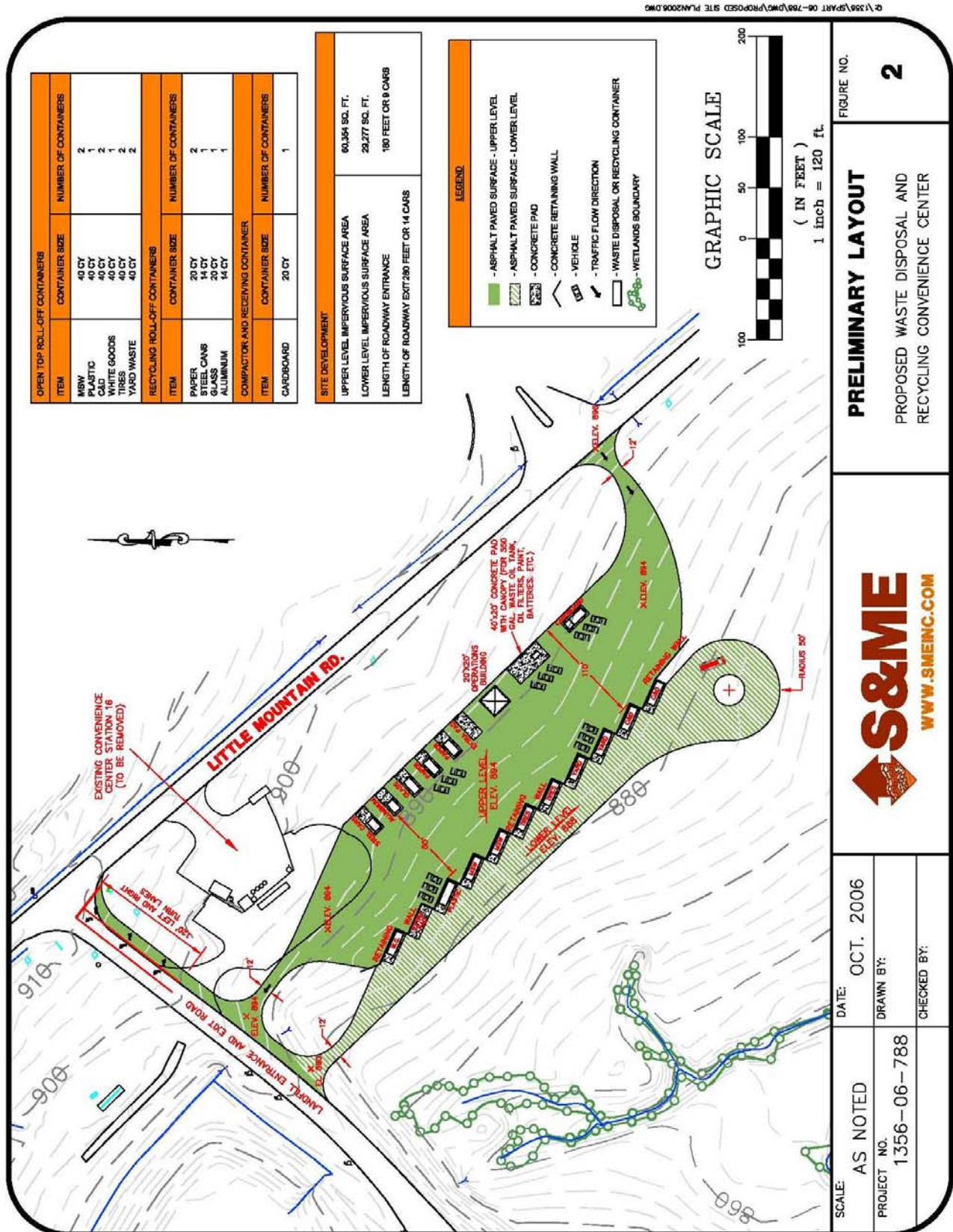
Anticipated completion date of August, 2008.



Project Expenditures and Funding Sources

<u>PROJECT</u>	<u>TOTAL</u>	<u>COMMITTED</u>	<u>FY</u>	<u>FY</u>	<u>FY</u>	<u>FY</u>	<u>FY</u>	<u>FY 2009-13</u>
<u>SOLID WASTE</u>	<u>PROJECT COST</u>	<u>FUNDING</u>	<u>2008/09</u>	<u>2009/10</u>	<u>2010/11</u>	<u>2011/12</u>	<u>2012/13</u>	<u>TOTAL</u>
<u>Convenience Center 16 Expansion</u>								
<u>Expenditures</u>								
Planning/Design/Engineering	30,000	30,000	0	0	0	0	0	0
Land Acquisition/Right-of-Way	0	0	0	0	0	0	0	0
Construction/Improvements	416,500	416,500	0	0	0	0	0	0
Capital Materials/Equipment	0	0	0	0	0	0	0	0
Technology Expenditures	0	0	0	0	0	0	0	0
Other	0	0	0	0	0	0	0	0
Total Expenditures	446,500	446,500	0	0	0	0	0	0
<u>Revenues</u>								
Solid Waste Fund	446,500	446,500	0	0	0	0	0	0
Total Revenues	446,500	446,500	0	0	0	0	0	0

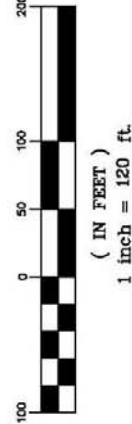
Convenience Center 16 Expansion – Preliminary Layout



OPEN TOP ROLL-OFF CONTAINERS		
ITEM	CONTAINER SIZE	NUMBER OF CONTAINERS
MSW	40 CY	2
PLASTIC	40 CY	1
CALD	40 CY	2
WHITE GOODS	40 CY	1
TIRES	40 CY	2
YARD WASTE	40 CY	2
RECYCLING ROLL-OFF CONTAINERS		
ITEM	CONTAINER SIZE	NUMBER OF CONTAINERS
PAPER	20 CY	2
STEEL CANS	14 CY	1
GLASS	14 CY	1
ALUMINUM	14 CY	1
COMPACTOR AND RECEIVING CONTAINER		
ITEM	CONTAINER SIZE	NUMBER OF CONTAINERS
CORDBOARD	20 CY	1

SITE DEVELOPMENT	
UPPER LEVEL IMPERVIOUS SURFACE AREA	60,354 SQ. FT.
LOWER LEVEL IMPERVIOUS SURFACE AREA	29,277 SQ. FT.
LENGTH OF ROADWAY ENTRANCE	180 FEET OR 8 CARS
LENGTH OF ROADWAY EXIT	280 FEET OR 14 CARS

LEGEND	
[Green Area]	- ASPHALT PAVED SURFACE - UPPER LEVEL
[Green Area]	- ASPHALT PAVED SURFACE - LOWER LEVEL
[Green Area]	- CONCRETE PAD
[Line]	- CONCRETE RETAINING WALL
[Symbol]	- VEHICLE
[Arrow]	- TRAFFIC FLOW DIRECTION
[Symbol]	- WASTE DISPOSAL OR RECYCLING CONTAINER
[Symbol]	- WETLANDS BOUNDARY



PRELIMINARY LAYOUT
PROPOSED WASTE DISPOSAL AND RECYCLING CONVENIENCE CENTER



ATTACHMENT NO. 4

SCALE:	AS NOTED	DATE:	OCT. 2006
PROJECT NO.	1356-06-788	DRAWN BY:	
		CHECKED BY:	