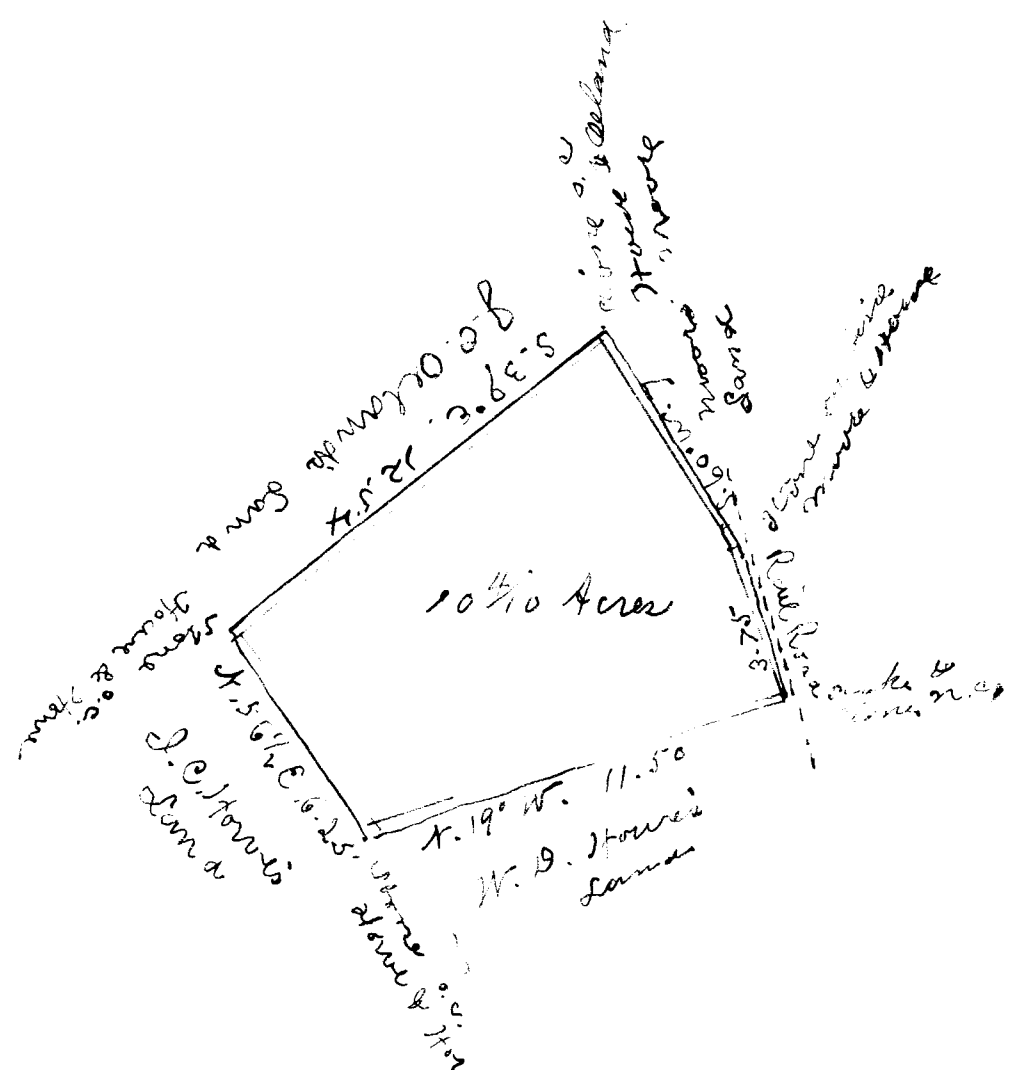


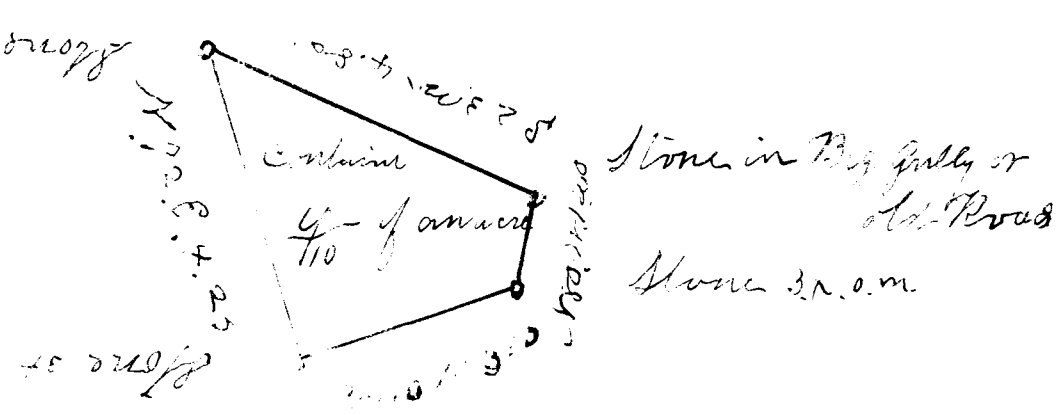
4  
 Parto Plat  
 Wm. D. Howe,  
 J. C. Jenkins.



Laid off from Wm. D. Howe to Newton Jenkins  
 Ten and four-tenths acres on Jimmie's creek,  
 near Wellford, Spartanburg County, South  
 Carolina. Feb. 18, 1888  
 Wm. S. Morrison, D.S.

Registered and Examined Jan 10th 1906

Parto  
 Surveyed by  
 J. C. Jenkins



The above Plat shows the shape and  
 courses & distances of the Negro Graveyard  
 in Spartanburg Village  
 Surveyed July 17th 1860 by Wm. S. Morrison D.S.

Registered and Examined Jan 23rd 1906