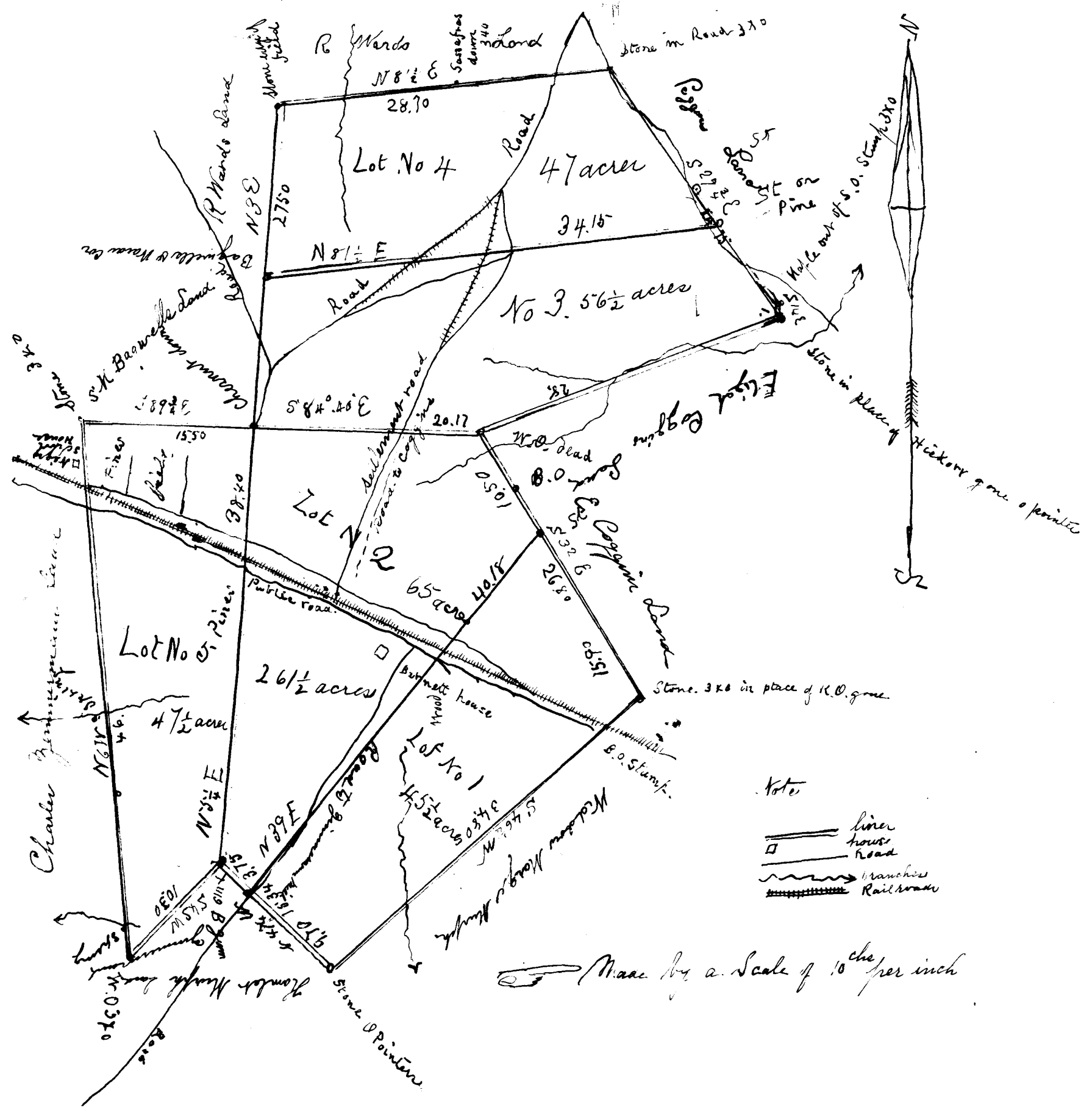


94

Ex Parte
Elijah Barnett Land
 # 7 Roll 10714



The State of South Carolina }
 Spartanburg County } The above plat represents a tract of land of 261 1/2 acres belonging to
 the estate of Elijah Barnett deceased situated in the State & County above mentioned on both sides
 the Spartanburg & Union Railroad being a desirable place on said road; and having such former metes
 and bounds as the real lines & margin of the same present - Resurveyed for G. W. Brown W. D.
 H. H. H. in the 12th & 13th days of Sept 1884 By J. F. Sloan Surveyor

Registered & examined March 9th 1909