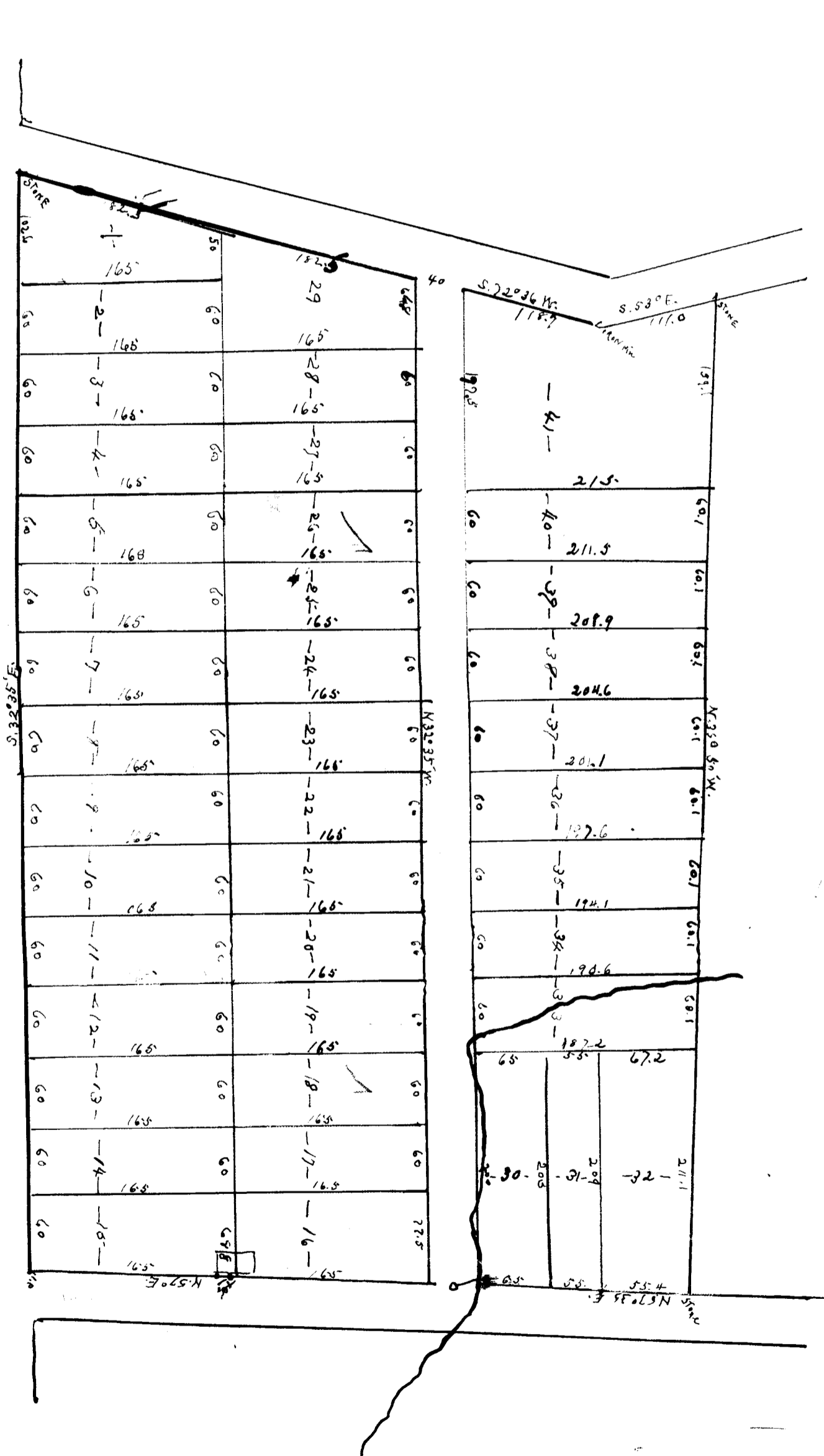


11
Ex Parte

THE
PROPERTY
OF
H. JOHNSON



BEFORE ME, SEPT. 1, 1900
I HAVE EXAMINED THE WE HAVE THIS DAY
BY ME AND SUBDIVIDED THE TRACT OF LAND
REPRESENTED BY THIS PLAT AND THAT THE
MARKS, METES AND BOUNDS ARE CORRECTLY
REPRESENTED HEREON.
THIS TRACT IS KNOWN AS PART OF THE
WADSWORTH GRANT AND LIES ABOUT
ONE AND ONE HALF MILES NORTH-
WEST OF THE CITY OF SPARTANBURG
AND NEAR THE S. P. COAL
MINES.

M. Johnson
C. Engle

Registered Certified and Examined Mar 14 1906