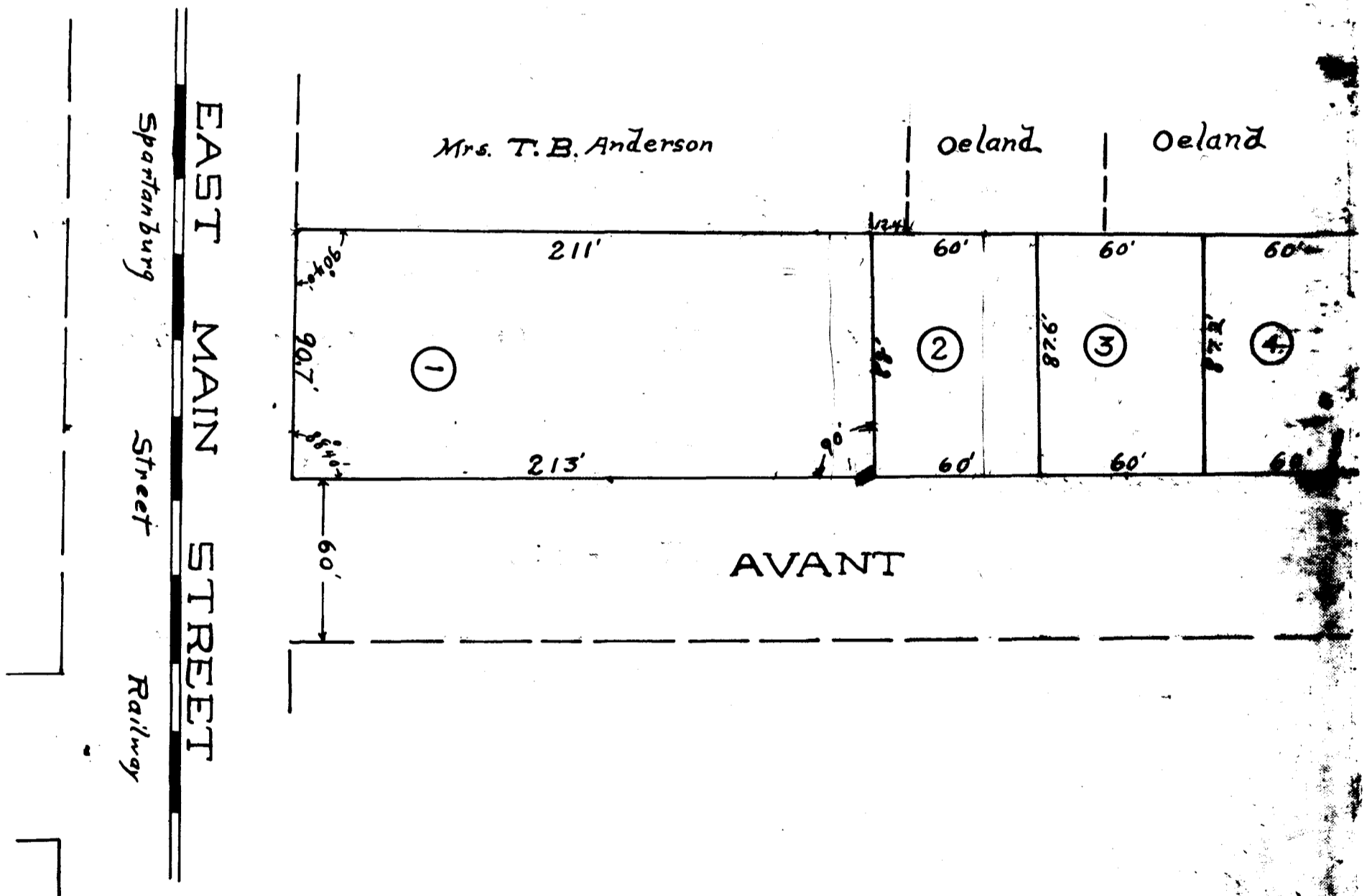


16

PLAT made for
J.W. ALEXADER
Subdividing the
RAVENEL PROPERTY.
May 4-1906. Scale 50ft per in.
Spartanburg, S.C. P.H. Foster, Sur.



39
46
13

WITNESSES:
I, _____, County Clerk of Spartanburg, S.C., do hereby certify that the foregoing is a true and correct copy of the original plat on file in my office.