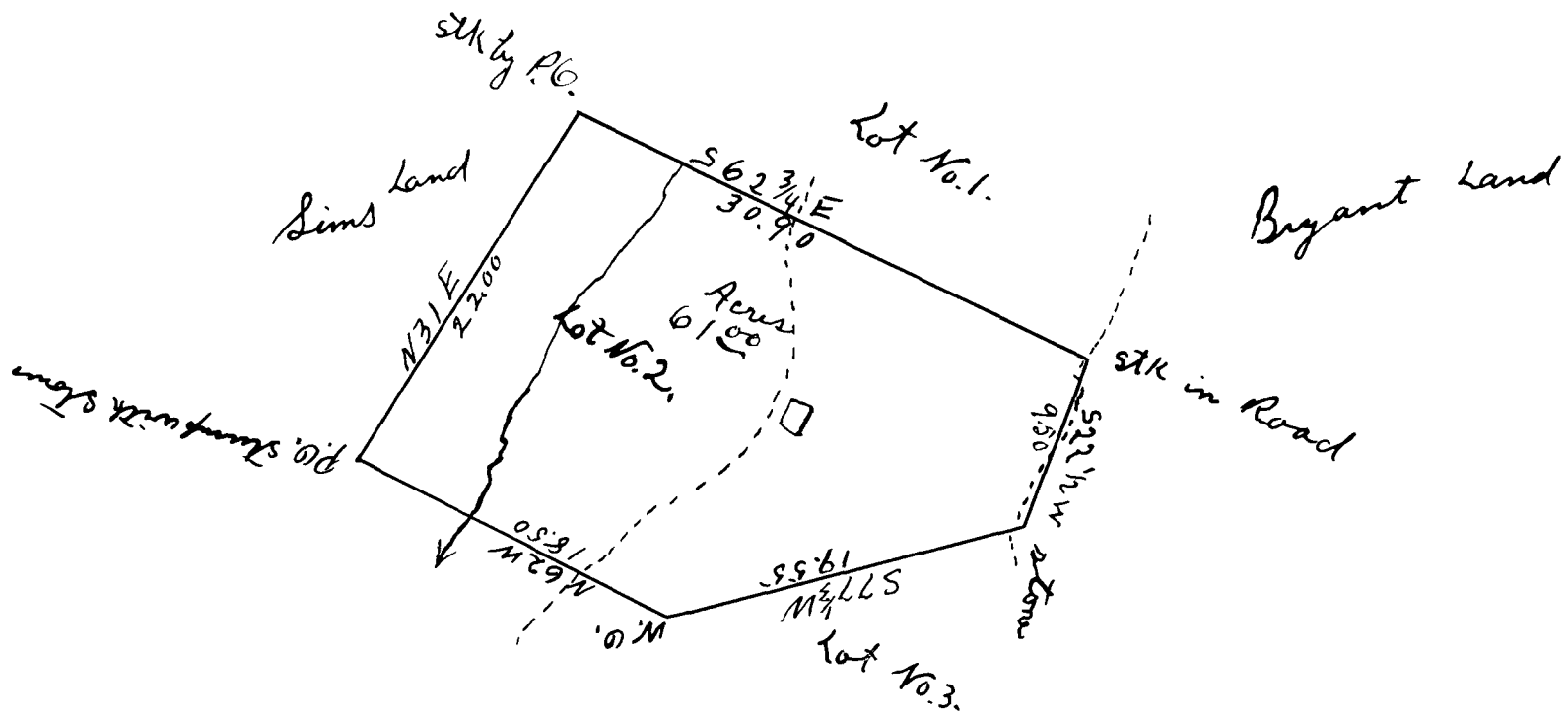


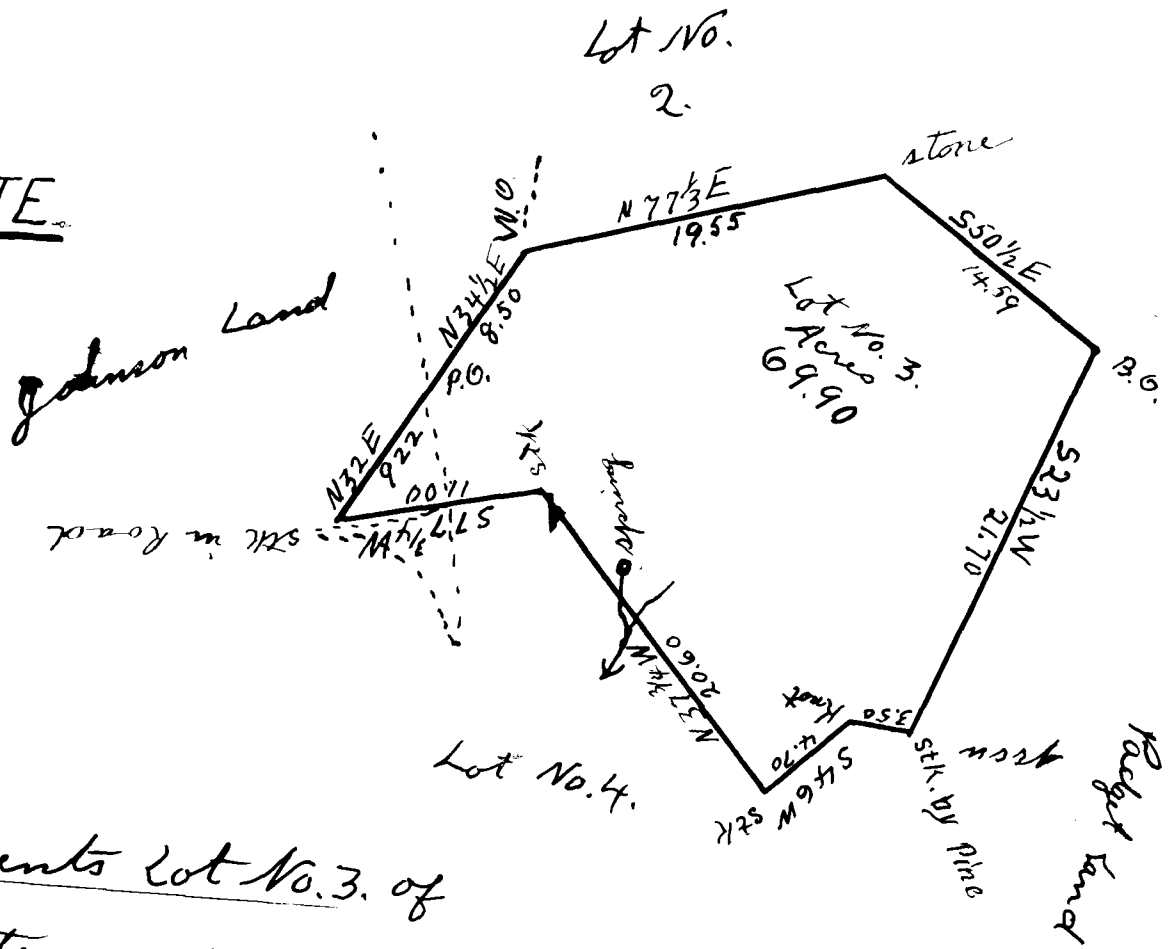
EX PARTE  
GEO. SETZLER'S ESTATE.



This Plat represents Lot No. 2. of  
Geo. Setzlers Estate, and contains  
Sixty one acres, surveyed Aug 1904  
by E. L. Archer

Registered, Certified and Examined August 17<sup>th</sup> 1906

EX PARTE  
GEO. SETZLER'S ESTATE.



This Plat represents Lot No. 3. of  
Geo. Setzler's estate and contains  
sixty nine & 9/100 acres, surveyed  
Aug. 1904. by E. L. Archer

Registered, Certified, and Examined August 17<sup>th</sup> 1906.