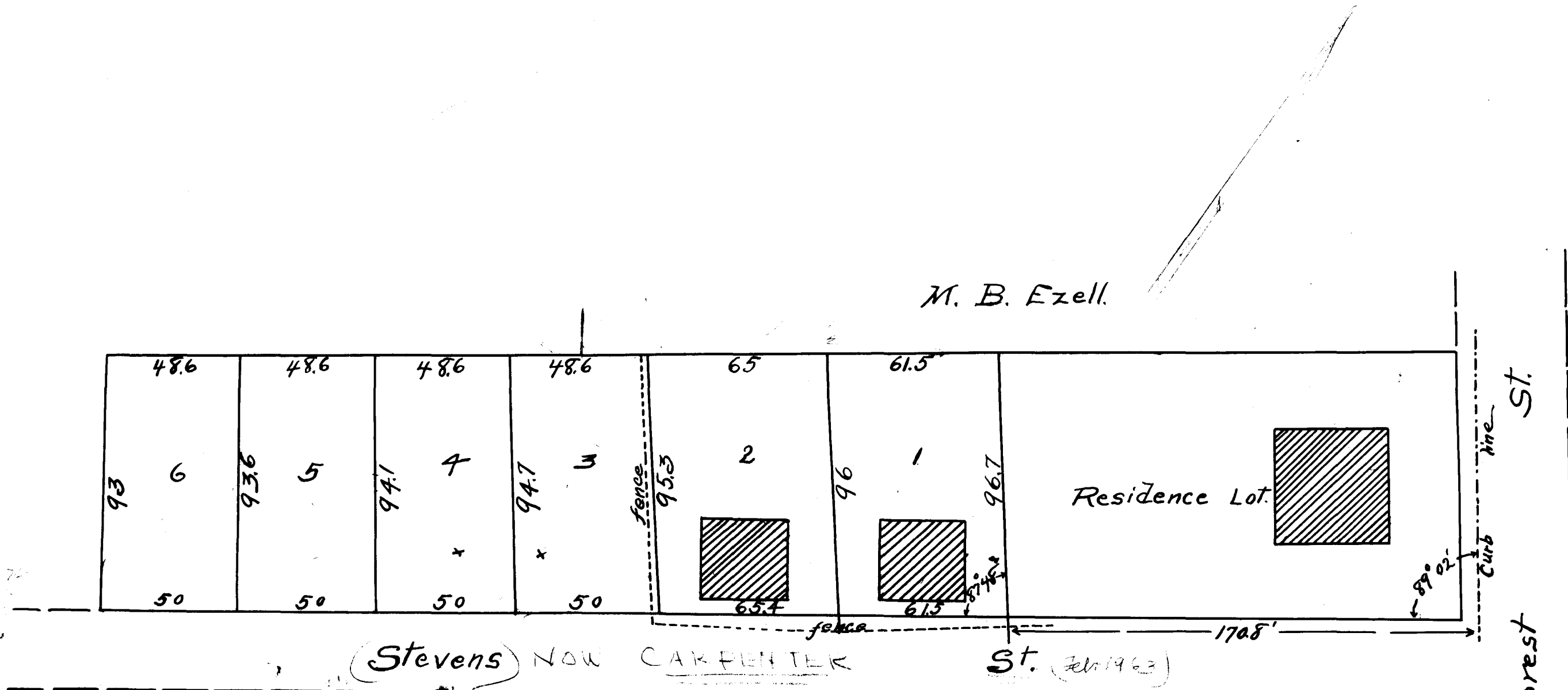


EX PARTE

Mrs. Mary E. Hunt.



Plat  
 Subdividing Property of  
 Mrs. Mary E. Hunt  
 Spartanburg S.C. June 4<sup>th</sup> 1906  
 Scale 40' = 1" P. H. Foster, C.E.

Registered, Certified and Examined August 28<sup>th</sup> 1906.