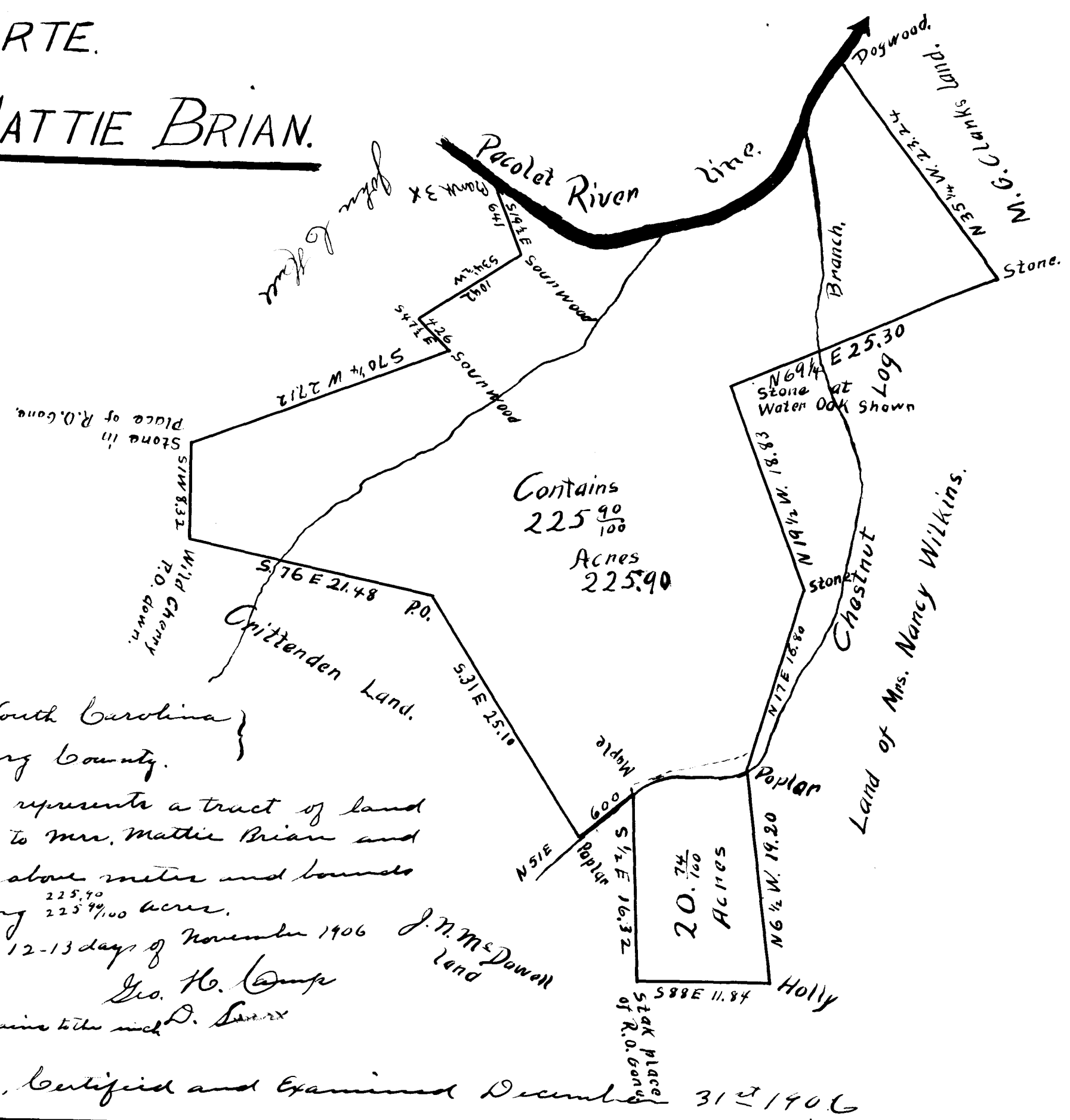


EX PARTE.

MATTIE BRIAN.



State of South Carolina }
Spartanburg County.

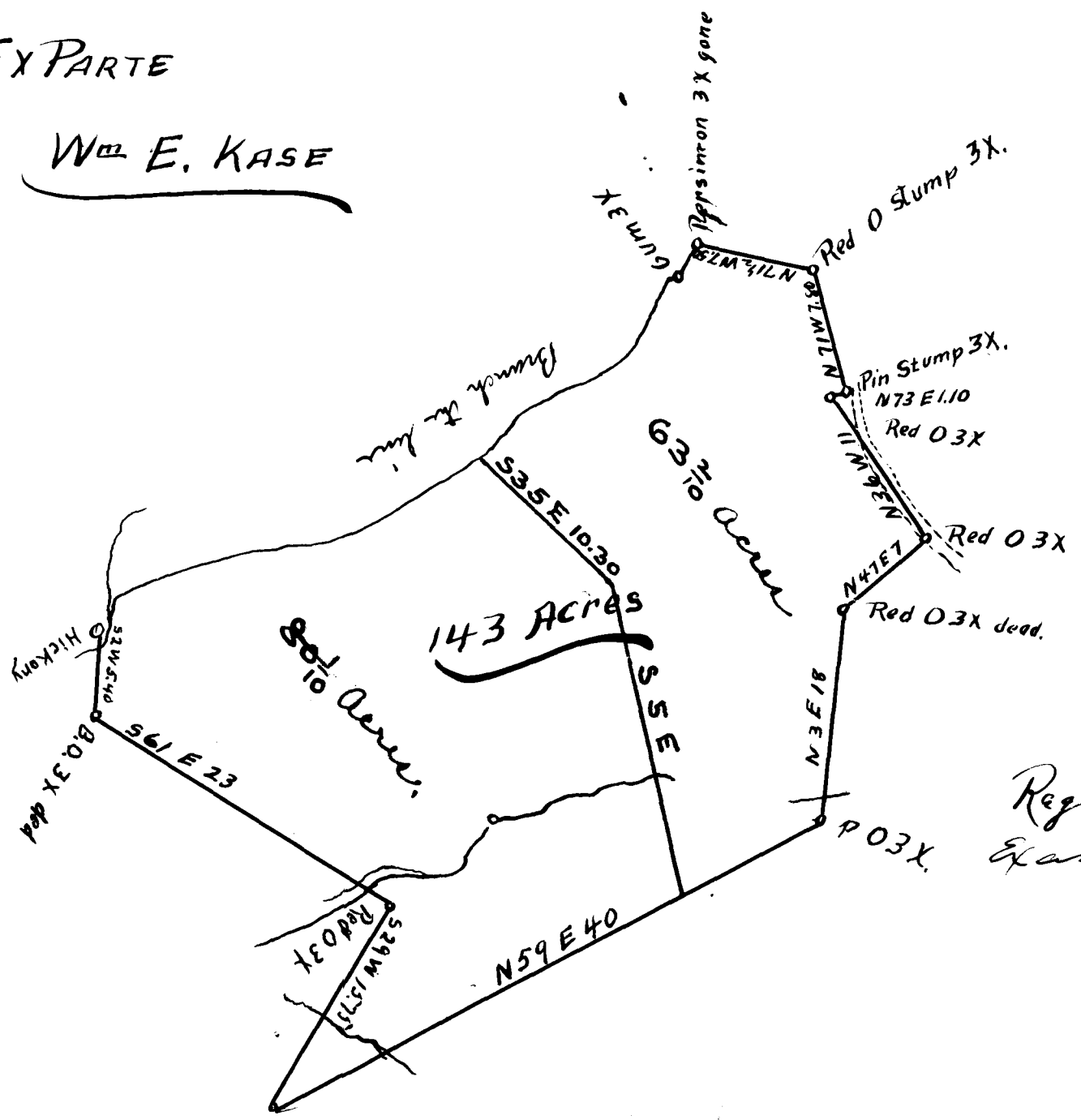
The above represents a tract of land
belonging to Mrs. Mattie Brian and
has the above meter and bounds
containing $225 \frac{90}{100}$ acres.

Surveyed 12-13 days of November 1906 J. N. McDowell
and
Geo. H. Camp
Scale 10 chains to the inch D. Seay

Registered, Certified and Examined December 31st 1906

EX PARTE

Wm E. KASE



Scale of 10 ch. per inch
South Carolina, Spartanburg District
Resurveyed and Certified for
Wm E. K the 30th Jan. 1845
Joel Dean, D.S.

Registered, Certified and
Examined Sept. 22, 1903

