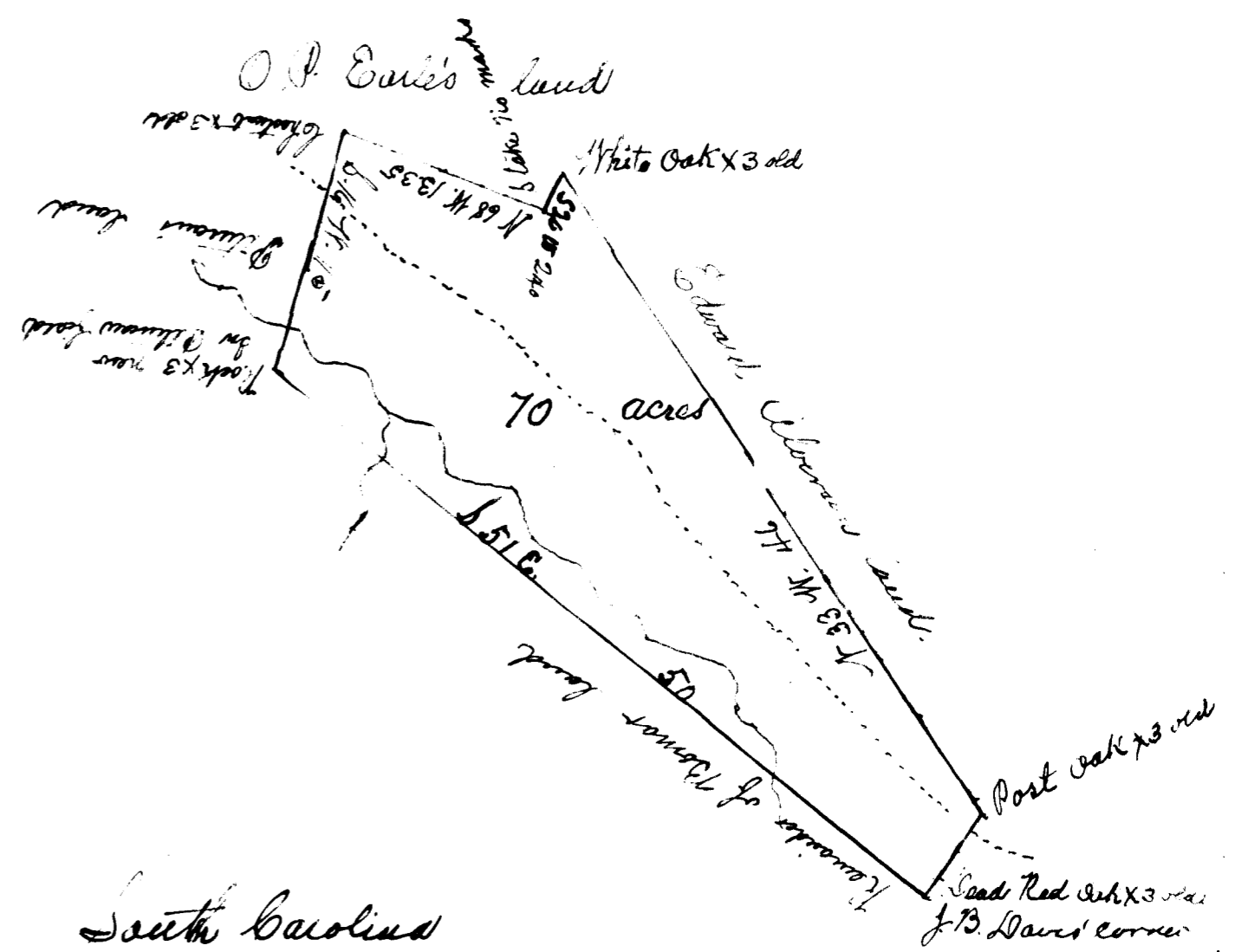


Ex. Ante Johnson & Nash

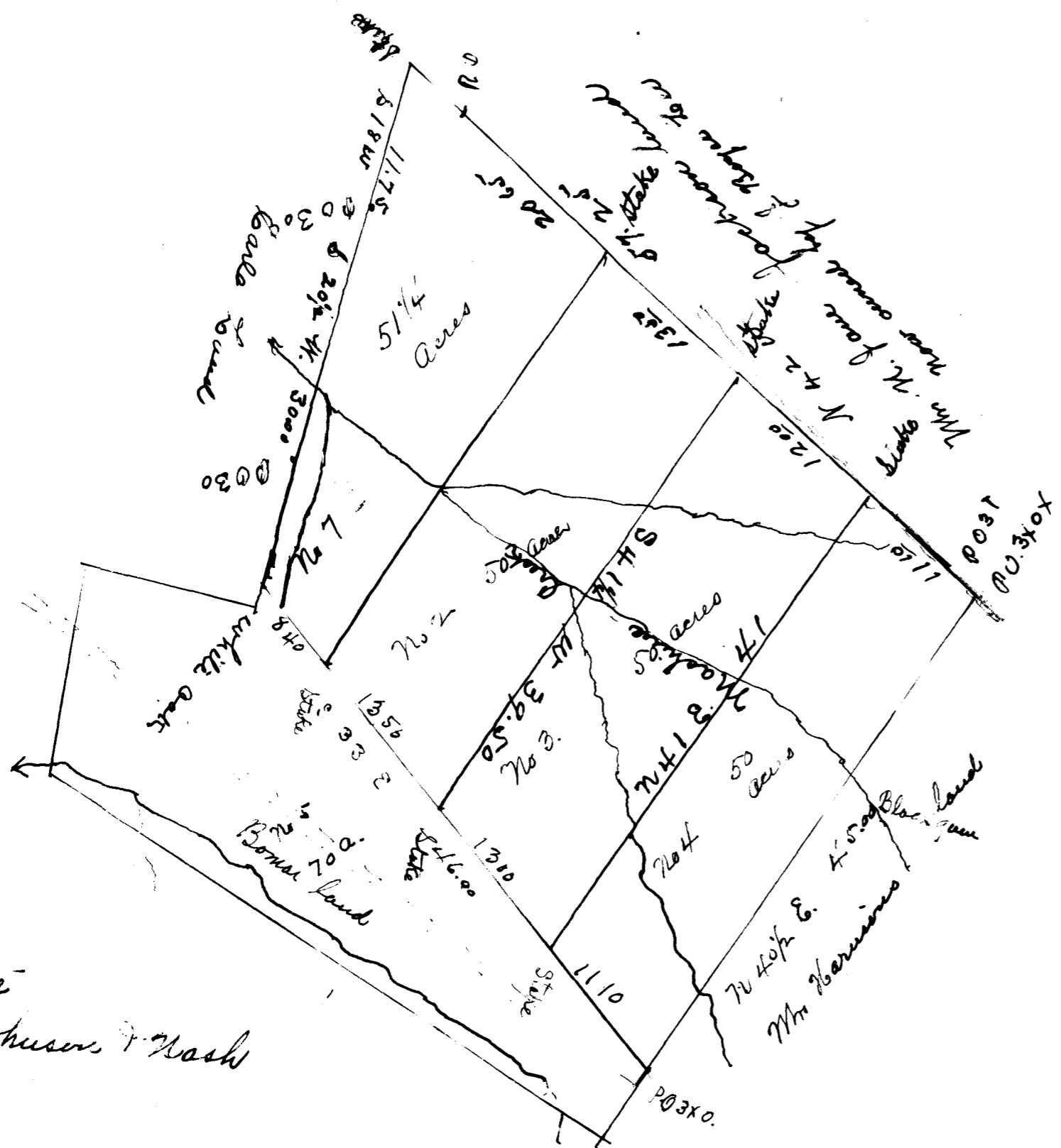
Laid down by a scale of ten chains to an inch



South Carolina

By request, I have surveyed for Edward Alvenson a tract of land containing seventy acres, (sold for taxes by the Auditor of Spartanburg County on 31st day of December 1877) lying and being in the County aforesaid, on branches of Colley's Creek waters of North Pacolet River, bounded on the N.E. by Edwards Alvenson's land; on the North by O.P. Earle's land on N.W. by Peteravis land and on the S.W. by the Remainder of Bomar land; and hath seen & found and marks as the above Plat represents. Surveyed the 25th day of January 1878.

Jno. Bankston Davis
Deputy Surveyor



Ex. Ante
Johnson & Nash

State of S.C. } This shows a division made from
Spartanburg Co } a plat made by Maj. Jno. Bankston Davis for
Edward Alvenson in 1878.

Platted Nov 16th 1906
Geo. H. Camp. D.S.

Maj Davis makes 200 acres in his plat
I make it 1 1/4 acres more. S.H.C.
10 chains to the inch
Now owned by J. S. Garton Esq.