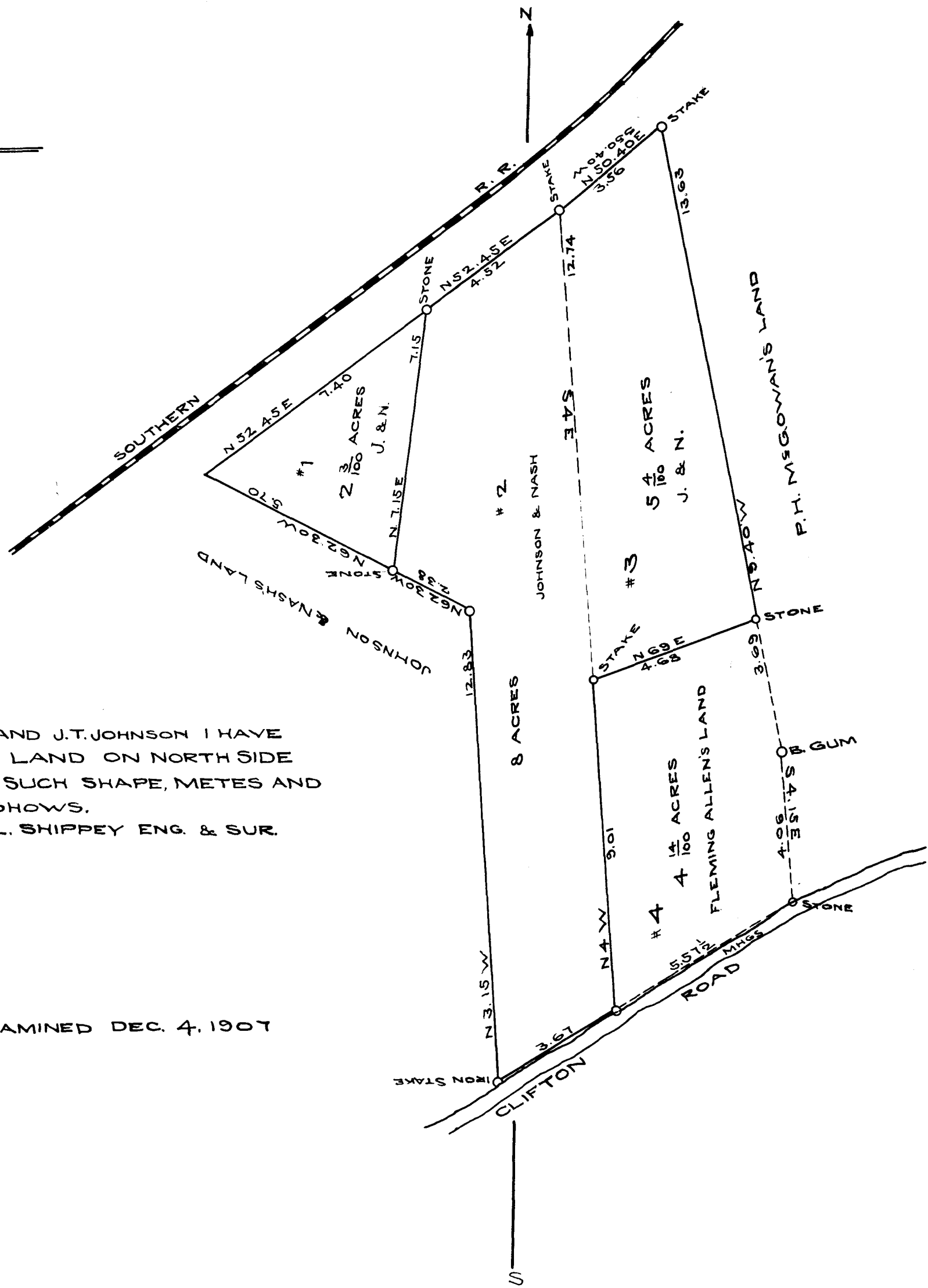


EX PARTE
 J.T. JOHNSON AND J.W. NASH



STATE OF SOUTH CAROLINA
 COUNTY OF SPARTANBURG

AT THE REQUEST OF J.W. NASH AND J.T. JOHNSON I HAVE
 SURVEYED A CERTAIN TRACK OF LAND ON NORTH SIDE
 OF THE CLIFTON ROAD HAVING SUCH SHAPE, METES AND
 BOUNDS AS ANNEXED PLAT SHOWS.
 NOV. 15, 1907
 T. L. SHIPPEY ENG. & SUR.
 SCALE 1 IN. = 1 FT.

REGISTERED, CERTIFIED AND EXAMINED DEC. 4, 1907