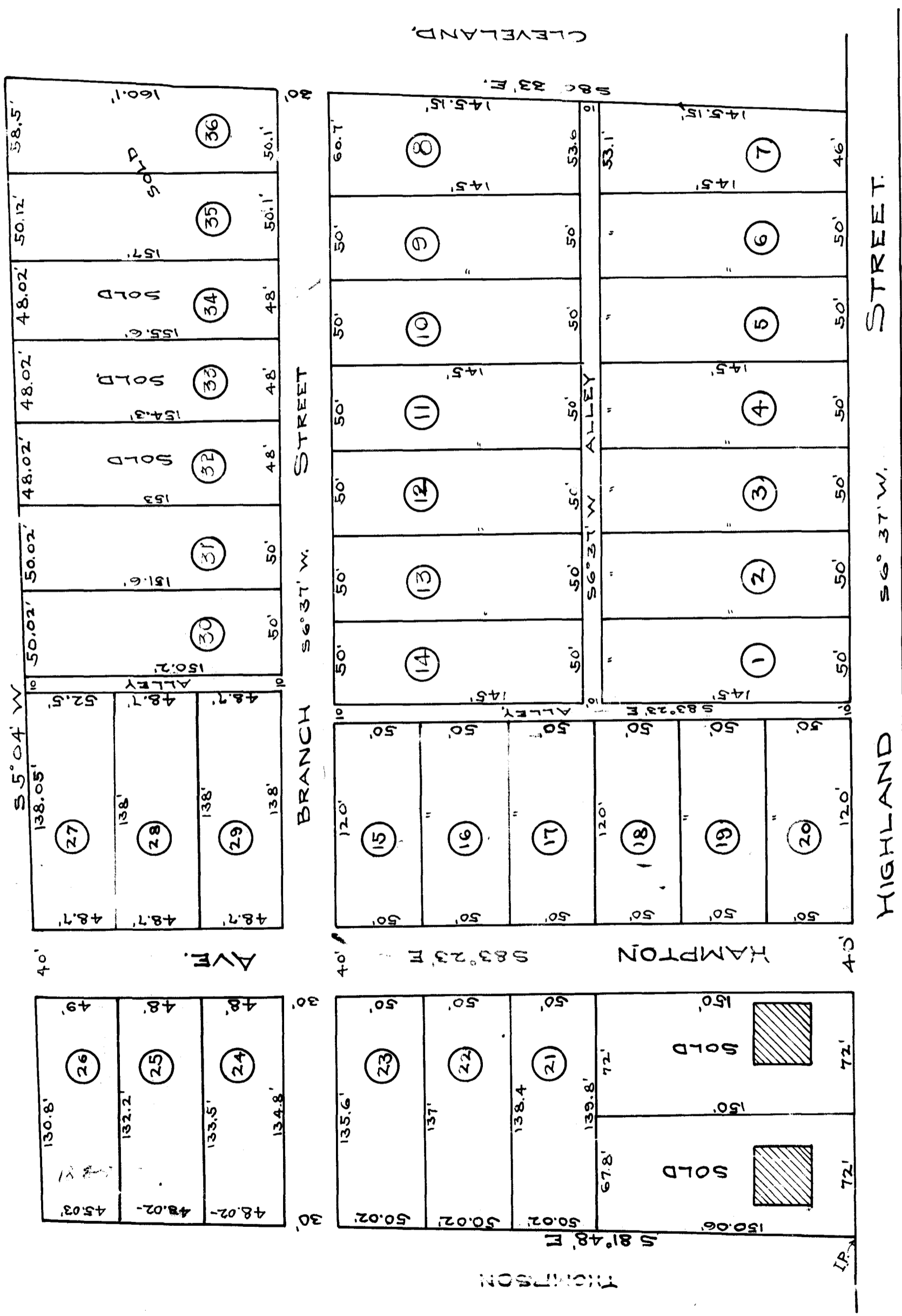


EX PARTE

RAYADSON TRUST CO



PLAT OF PROPERTY OF  
 RAYADSON TRUST COMPANY  
 FORMERLY THE MARY M. WINN PROPERTY  
 SPARTANBURG, S. C.  
 APRIL, 18<sup>TH</sup> 1907. P.H. FOSTER, SUR.

REGISTERED, CERTIFIED & EXAMINED JUNE 29<sup>TH</sup> 1908.