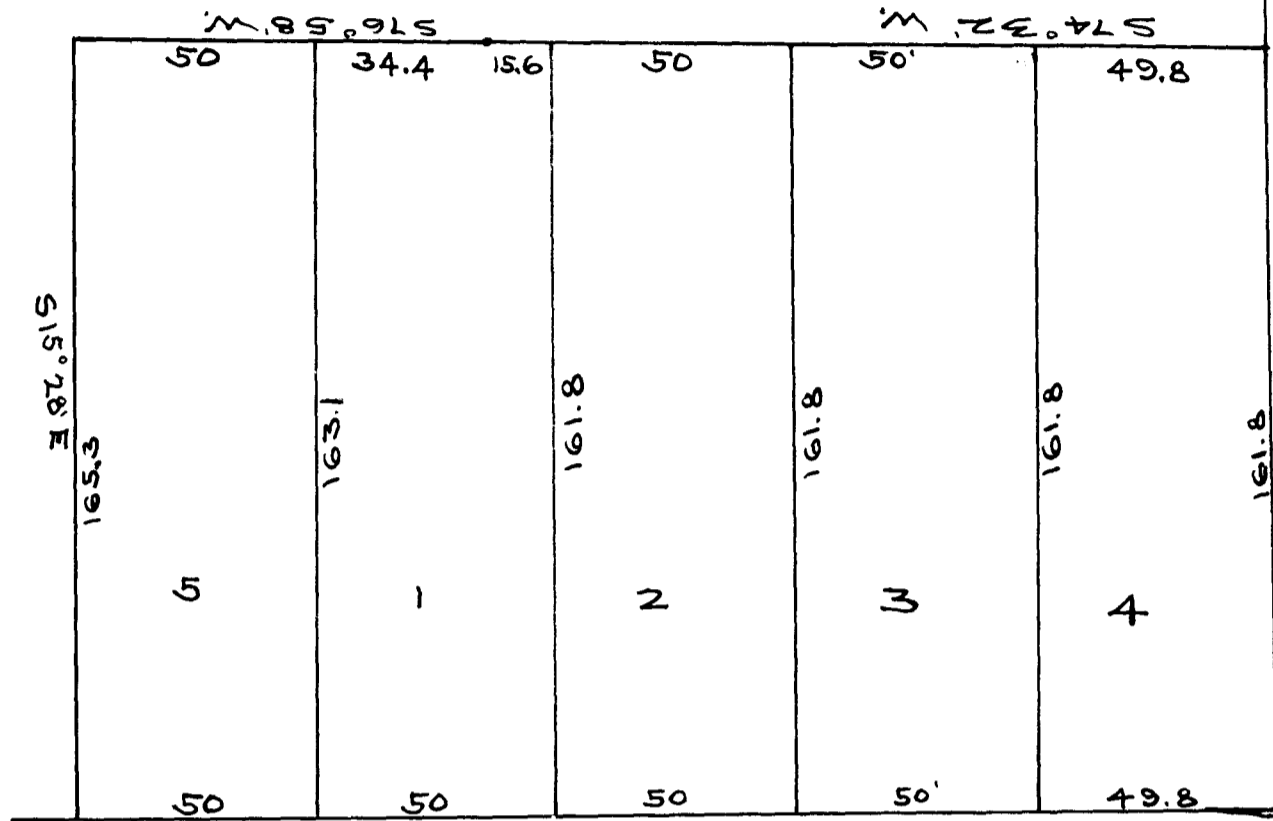


EX PARTE
J.T. CALVERT.

PLAT
OF
DR. J.T. CALVERT'S ST JOHN STREET LOTS.
FORMERLY KNOWN AS A PART OF THE HOSEA DEAN
CITY LOTS.

PLATTED BY A. MADOLE



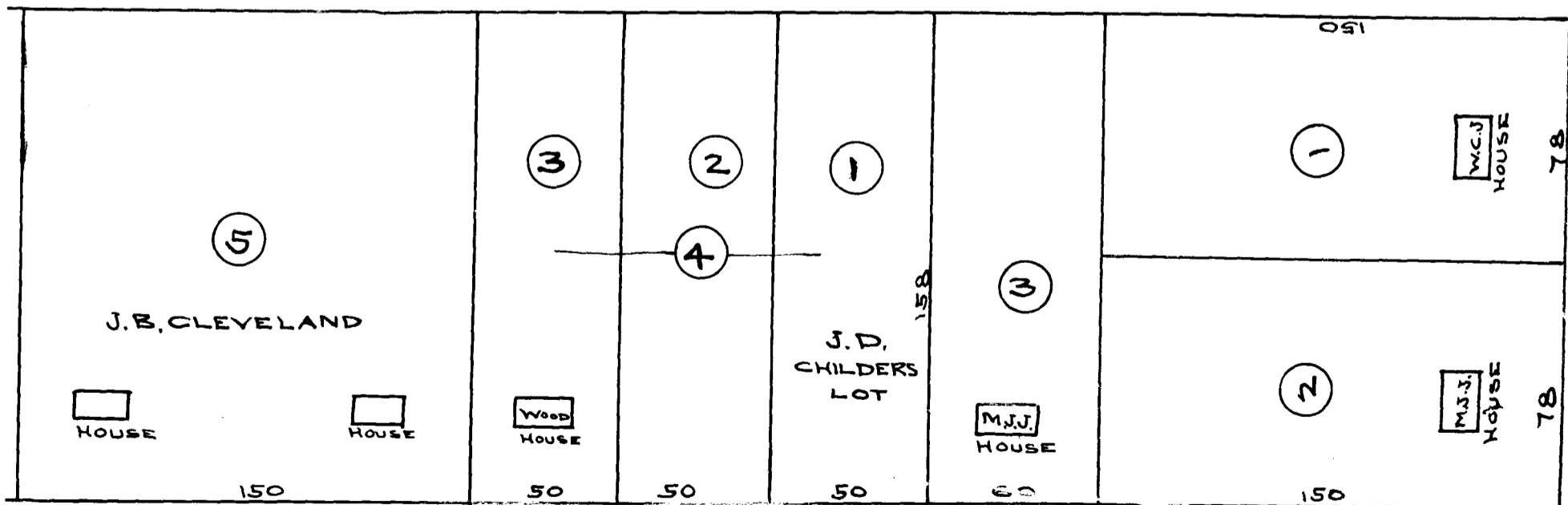
ST. JOHN STREET.

N74° 32' E.

SURVEYED BY J.W. BRUNSON
SCALE 40 FT. TO THE INCH. JUN 1892

REGISTERED, CERTIFIED & EXAMINED DECEMBER 7TH 1908

EX PARTE
M. J. JOHNSON



SEAY STREET

SOUTH CHURCH ST.

SUB-DIVISION OF LAND SOLD TO M.J. JOHNSON BY GEO. A. BLANCHARD,
WITH SUB-DIVISION OF LOT N^o 4 BY W.C. JOHNSON.

JANUARY 20, 1909.

REGISTERED, CERTIFIED & EXAMINED JANUARY 21ST 1909