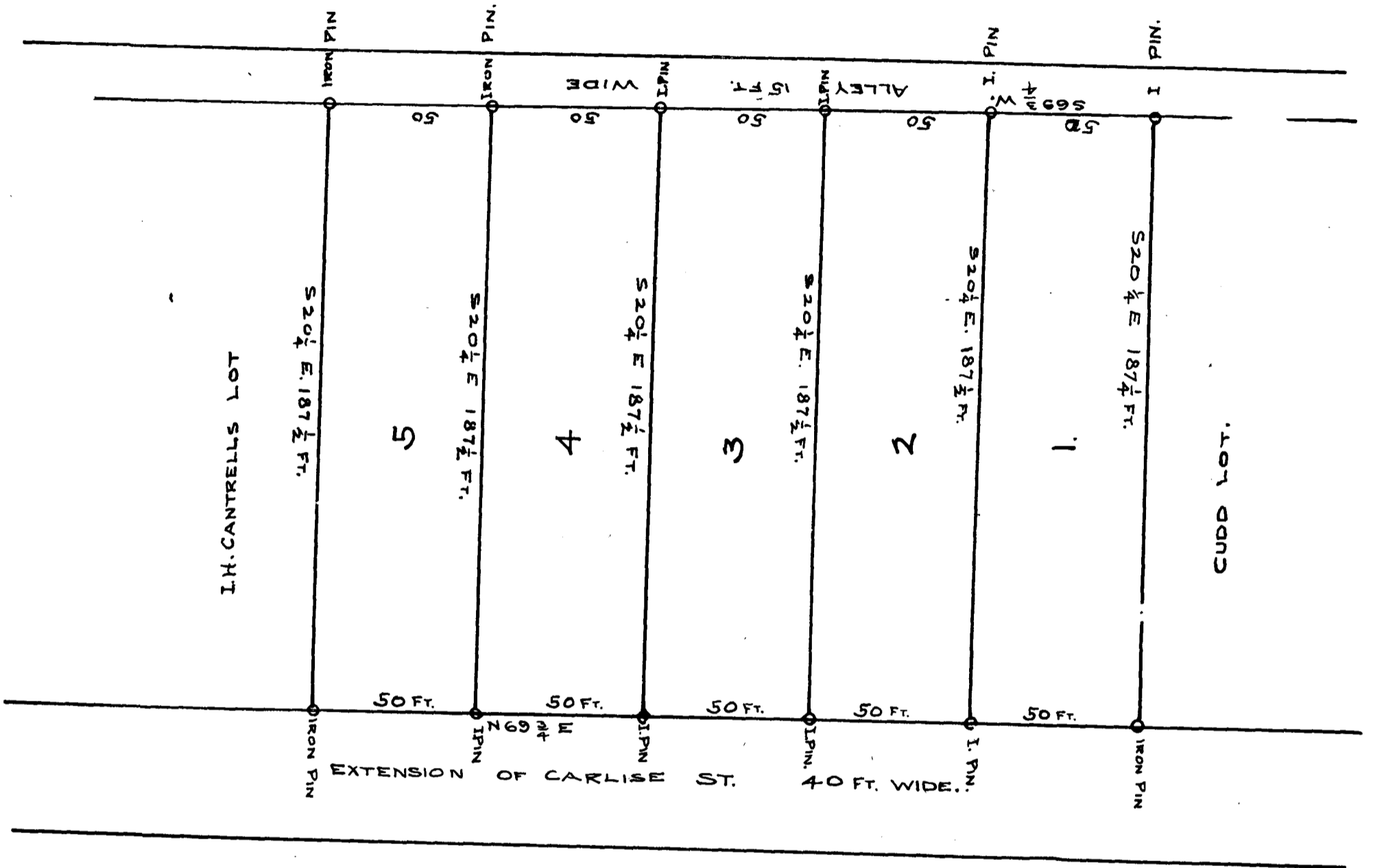


96

EX PARTE  
I. H. CANTRELL



THE ABOVE PLAT REPRESENTS FIVE LOTS IN THE CITY OF SPARTANBURG ON THE NORTH SIDE OF AN EXTENSION OF CARLISLE STREET. SURVEYED FOR I. H. CANTRELL, THIS 1<sup>ST</sup> DAY OF MAY 1908

W. W. HARRIS  
SURVEYOR.

REGISTERED, CERTIFIED & EXAMINED JAN. 26, 1909.