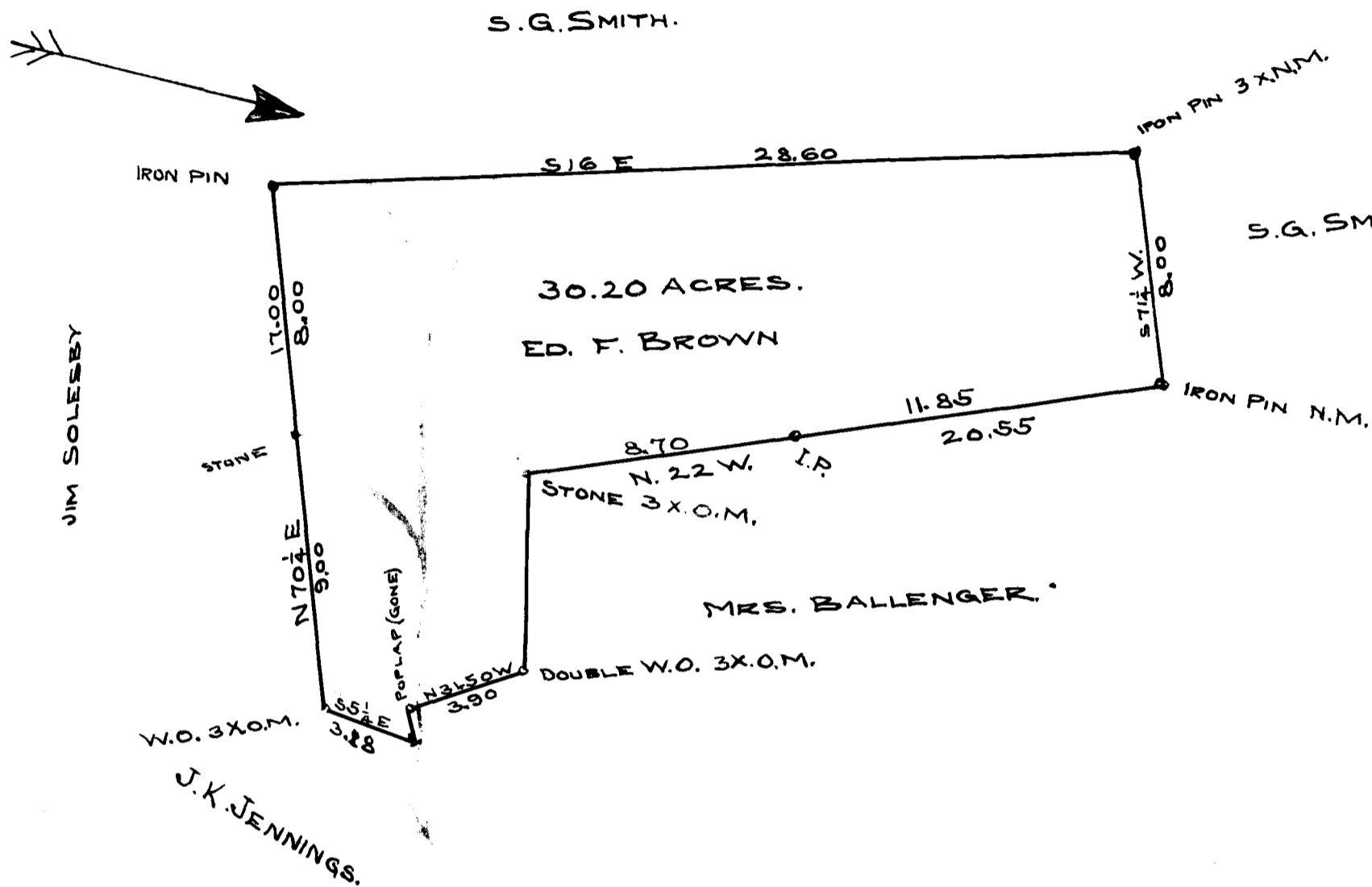


EX PARTE  
ED. F. BROWN



STATE OF SOUTH CAROLINA.  
COUNTY OF SPARTANBURG

AT THE REQUEST OF MR. S.G. SMITH I HAVE THIS DAY LAID OFF A TRACT OF 30.2 ACRES FROM THE EASTERN END OF HIS FARM NEAR GLENDALE, S.C. AND FOUND THE SAME TO HAVE SUCH SHAPE, METES AND BOUNDS AS ABOVE PLAT REPRESENTS. SAID TRACT CONVEYED BY HIM TO ED. F. BROWN SAME DATE.

SCALE 5CH. TO INCH.

JULY 3, 1909.

S. J. DUPRE,  
SUR.

NOTE: FOR DEED SEE DEED BOOK "4-S" PAGE "334"

REGISTERED, CERTIFIED & EXAMINED OCT. 25<sup>TH</sup> 1909.