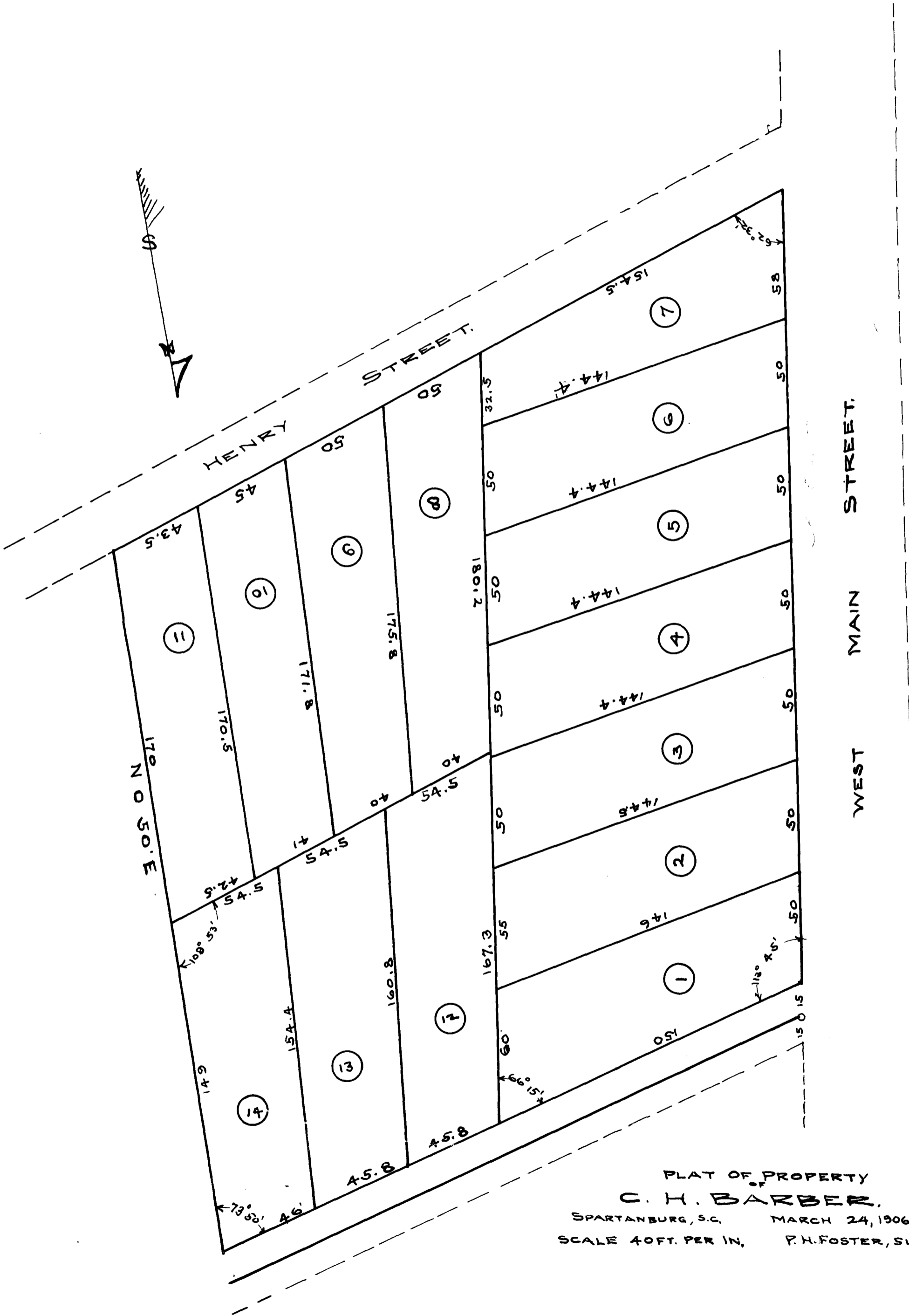


EX PARTE
C. H. BARBER



PLAT OF PROPERTY
C. H. BARBER.
 SPARTANBURG, S.C. MARCH 24, 1906
 SCALE 40 FT. PER IN. P. H. FOSTER, SUR.

REGISTERED, CERTIFIED & EXAMINED JUNE 9TH 1909.