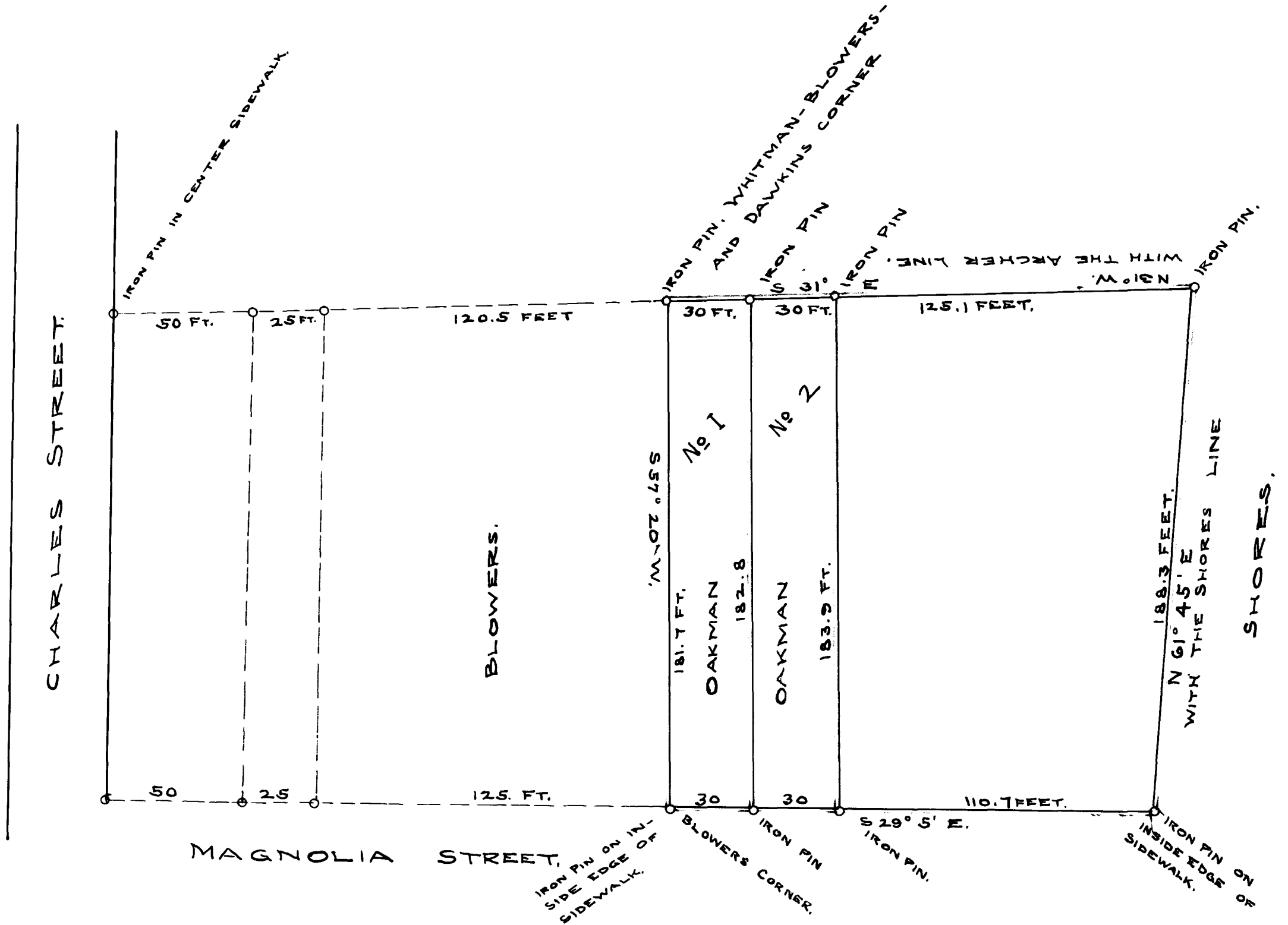


EX PARTE

SPARTANBURG LAND & IMPROVEMENT CO.



THE RED LINES IN THE ABOVE PLATT REPRESENTS A LOT OF LAND SITUATED IN THE CITY OF SPARTANBURG ON THE EAST SIDE OF MAGNOLIA STREET - SURVEYED FOR THE SPARTANBURG LAND AND IMPROVEMENT CO. THIS APRIL 29, 1909.

THE BLACK DOTTED LINES SHOW THE VARIOUS LOTS AND THE DISTANCES INTERVENING BETWEEN THIS PROPERTY AND CHARLES STREET. ALL MEASUREMENTS ARE MADE FROM THE INSIDE EDGE OF SIDEWALKS.

OWING TO THE TROLLY AND VARIOUS ELECTRIC WIRES ON AND IN THE VICINITY OF THE SURVEY, THE MAGNETIC READINGS ON THE LINES ARE NOT RELIABLE AND THEREFORE IN LOCATING THESE CORNERS - DISTANCES ALONE SHOULD GOVERN.

W.W. HARRIS, S.

REGISTERED, CERTIFIED & EXAMINED MAY. 4TH 1909.