

EX PARTE
T. S. SEASE

SURVEY & PLAT

OF
A LOT ON S. CHURCH & S. LIBERTY STS.

PROPERTY OF T. S. SEASE,
CITY OF SPARTANBURG, S. C.

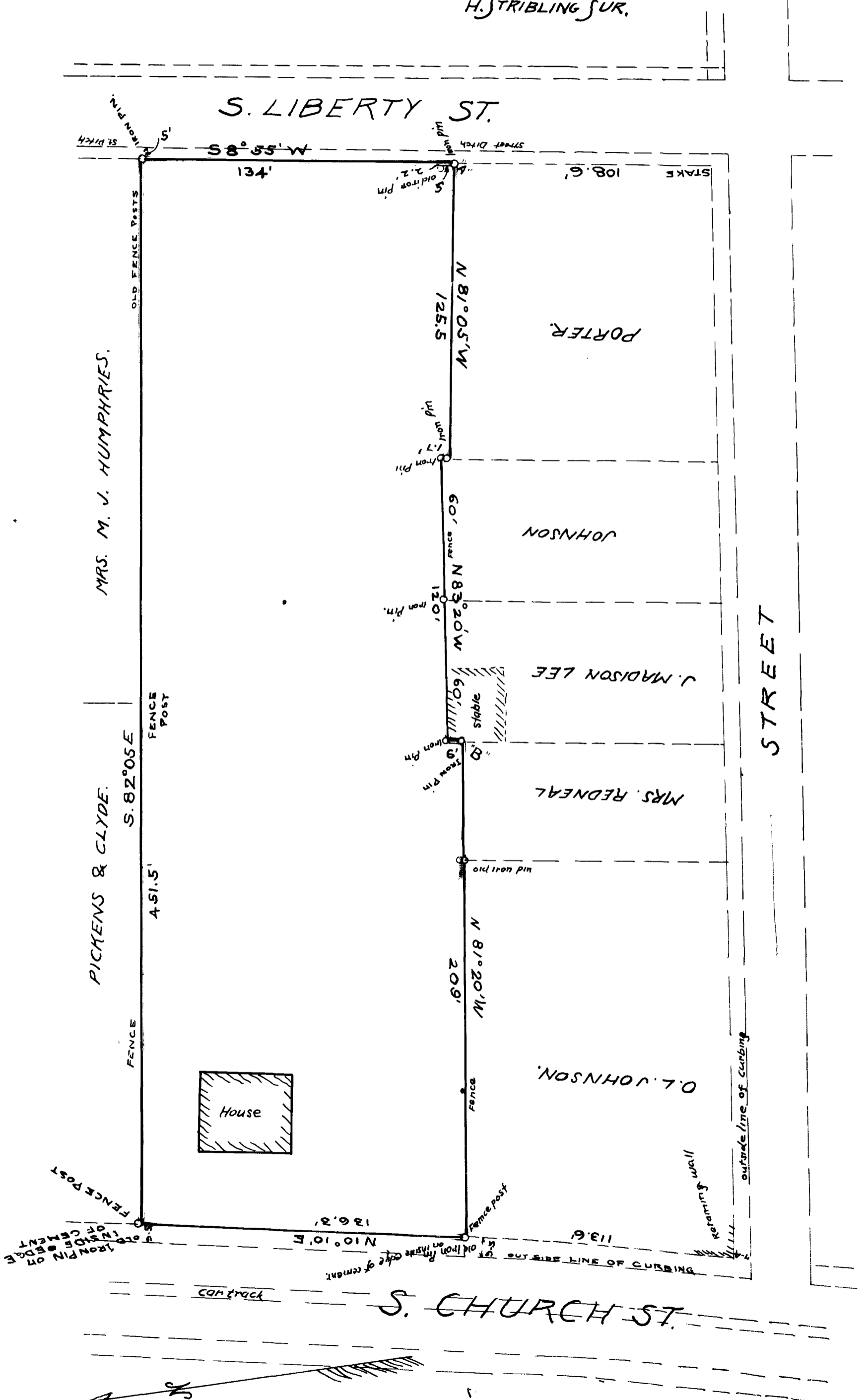
JULY 1 ST 1909

SCALE 1 IN = 40 FT.

H. STRIBLING SUR.

NOTE:

SEE DEED BOOK "4-P" PAGE "768"



REGISTERED, CERTIFIED & EXAMINED JULY 9th 1909.