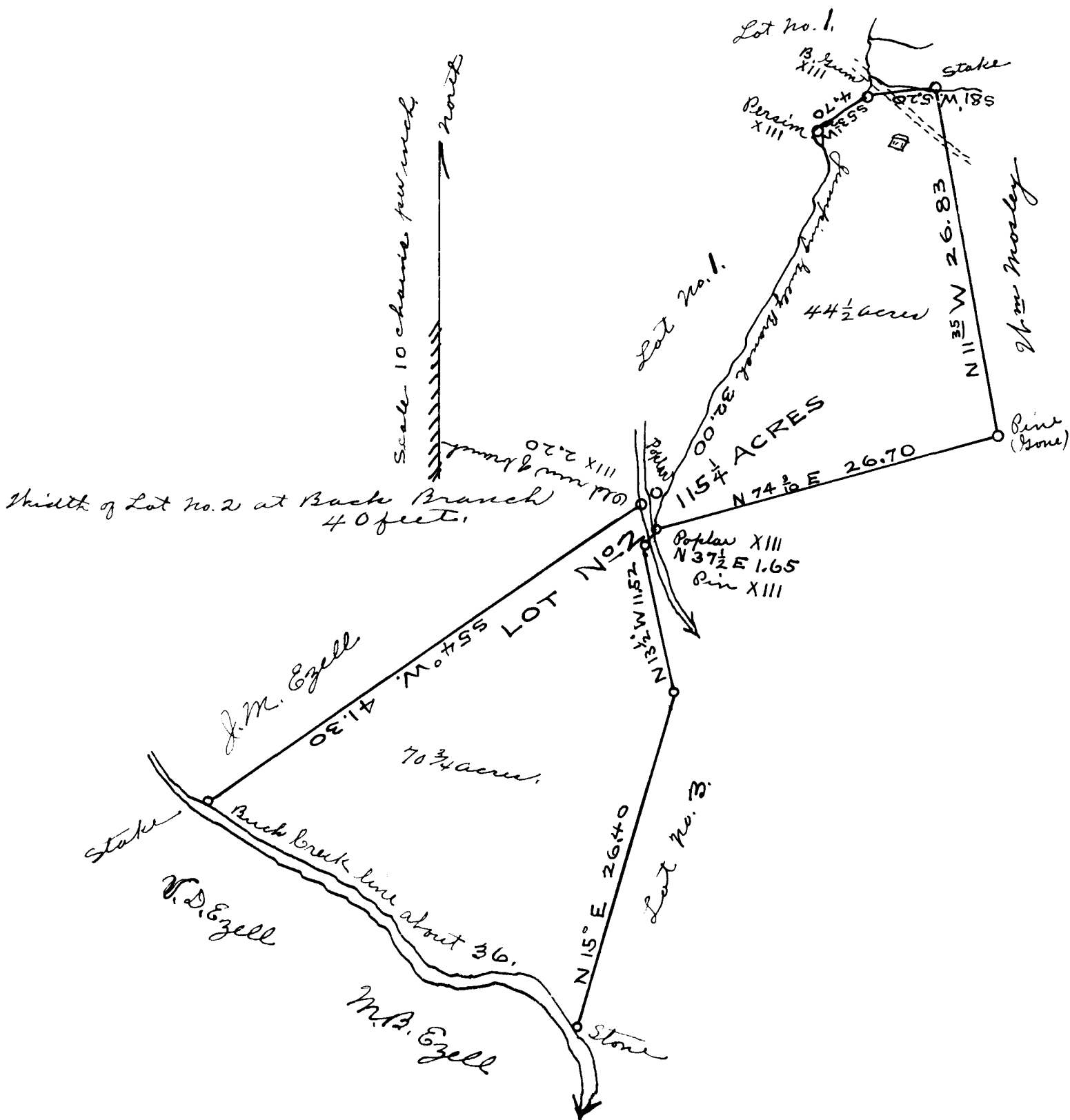


EX PARTE
 ESTATE OF W. H. McCLURE, DEC'D
 LOT NO. 2.



Pursuant to the request of the Executor I have resurveyed the land of W. H. McClure, dec'd and have divided it into four lots. The foregoing plot represents No. 2. It contains $115\frac{1}{4}$ Acres, lying in Spartanburg County, S. C., side of Buck Creek, and on both sides of Back Branch, and has such form, marks and boundaries as are above shown.

Aug. 19th 1891.

F. E. Johnson, Surveyor.

Registered, Certified and Examined November 18th 1909.