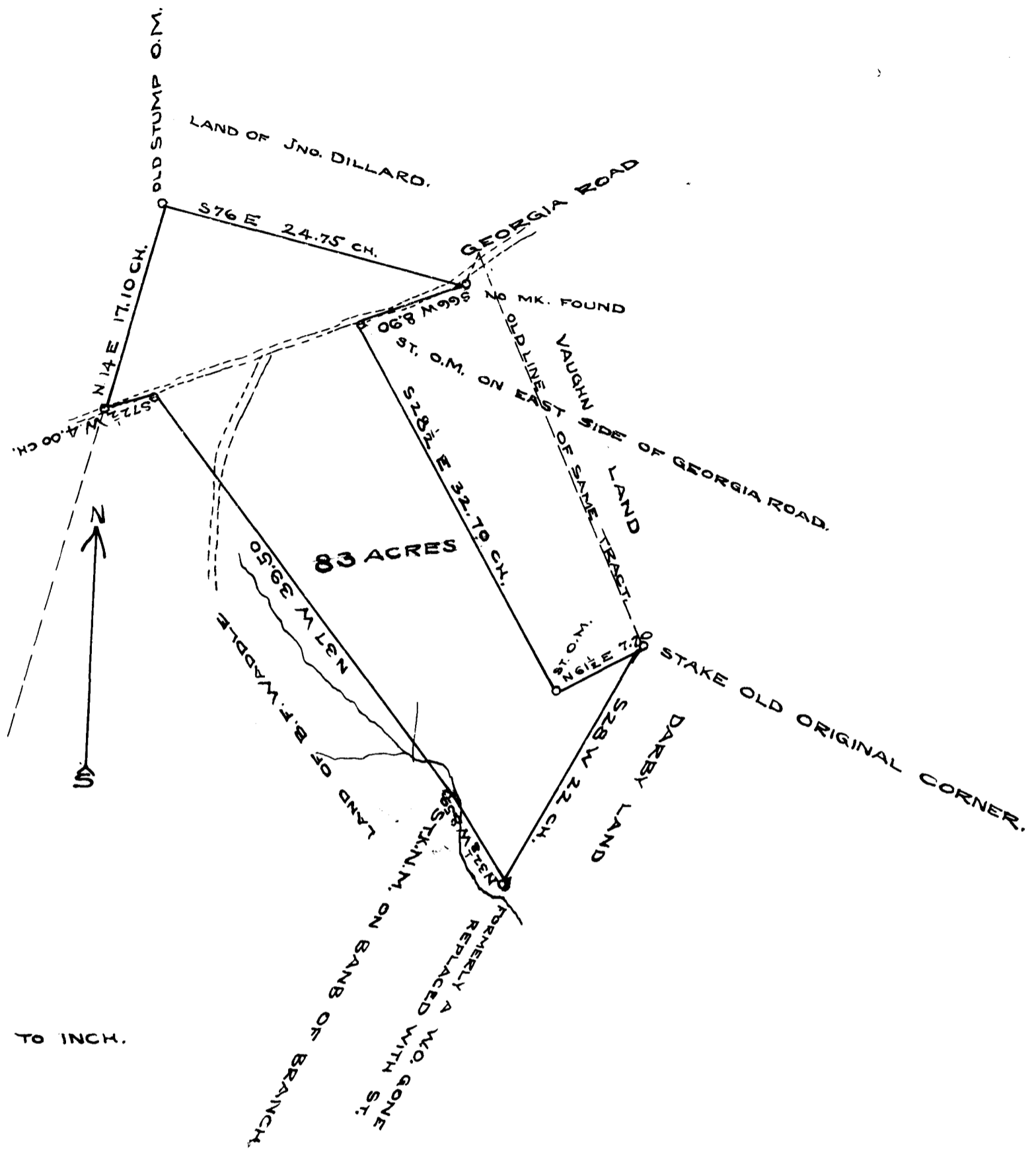


EX PARTE
J. P. WADDEL



SCALE 10 CH TO INCH.

STATE OF SOUTH CAROLINA
SPARTANBURG COUNTY

BY REQUEST OF B. F. WADDEL ESQ. I HAVE SURVEYED AND DIVIDED A TRACT OF LAND RECENTLY PURCHASED BY THE SAID B. F. WADDEL FROM GEORGE BURNETT. THE ABOVE PLAT REPRESENTING THE PORTION OF THE SAID TRACT SOLD TO HIS SON J. P. WADDEL IT HAVING SUCH SHAPE MARK, METES & BOUNDS AS SHOWN.

SURVEYED APR. 21, 1903

W. W. HENDRIX.

REGISTERED, CERTIFIED & EXAMINED NOV. 4, 1909.