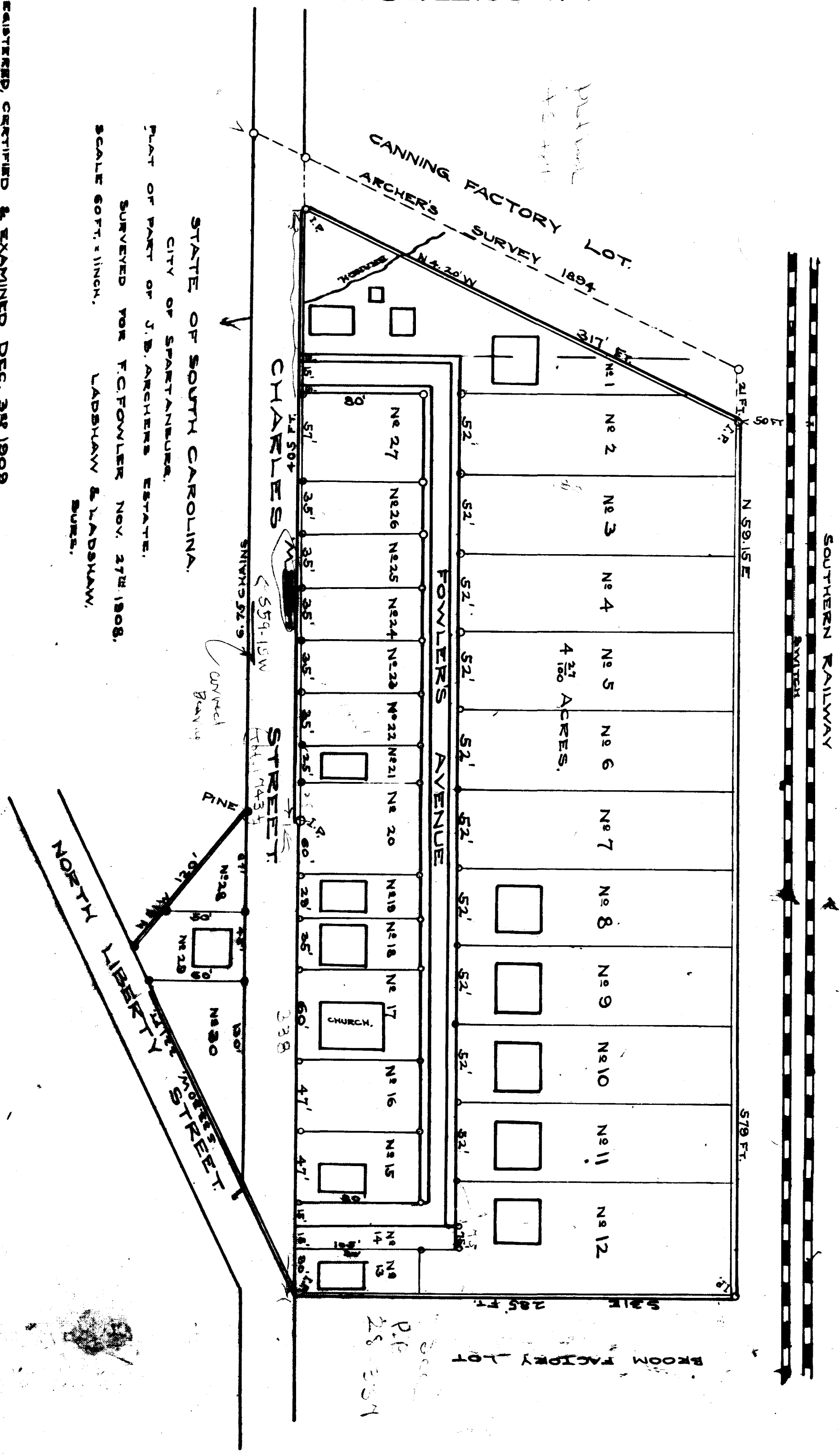


EX PARTE
FOWLER'S HEIGHTS.

REGISTERED, CERTIFIED & EXAMINED DEC. 30th 1909.

STATE OF SOUTH CAROLINA.
CITY OF SPARTANBURG.
PLAT OF PART OF J.B. ARCHER'S ESTATE.
SURVEYED FOR F.C. FOWLER NOV. 27th 1908.
SCALE 60 FT. = 1 INCH.
LADSHAW & LADSHAW,
SURS.



EX PARTE
FOWLER'S HEIGHTS.

132