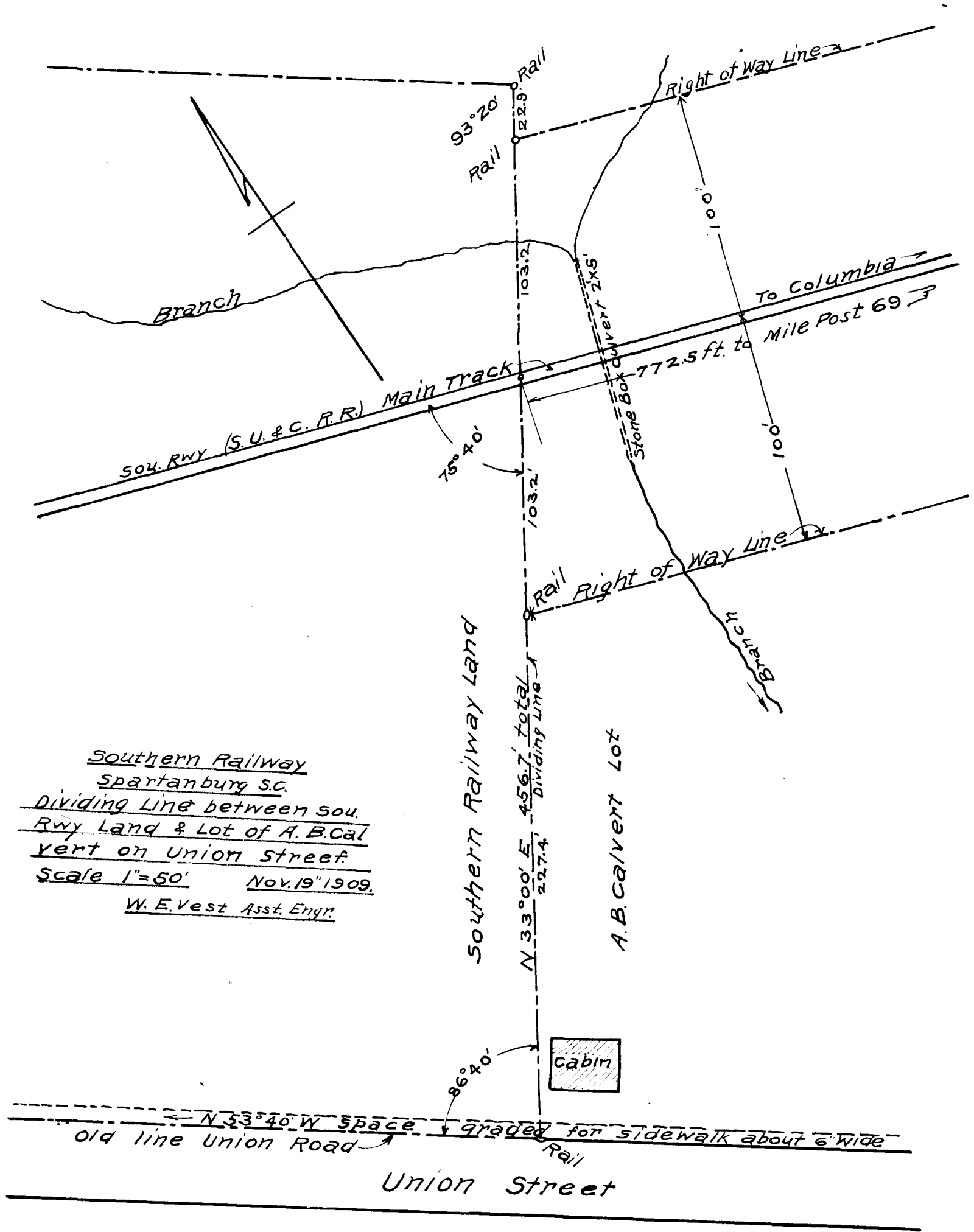


EX PARTE
SOUTHERN RAILWAY



Southern Railway
Spartanburg S.C.
Dividing Line between sou.
Rwy Land & Lot of A. B. Cal
vert on Union Street.
Scale 1"=50' Nov. 19" 1909.
W. E. Vest Asst. Engr.

REGISTERED, CERTIFIED & EXAMINED DEC. 22ND 1909.