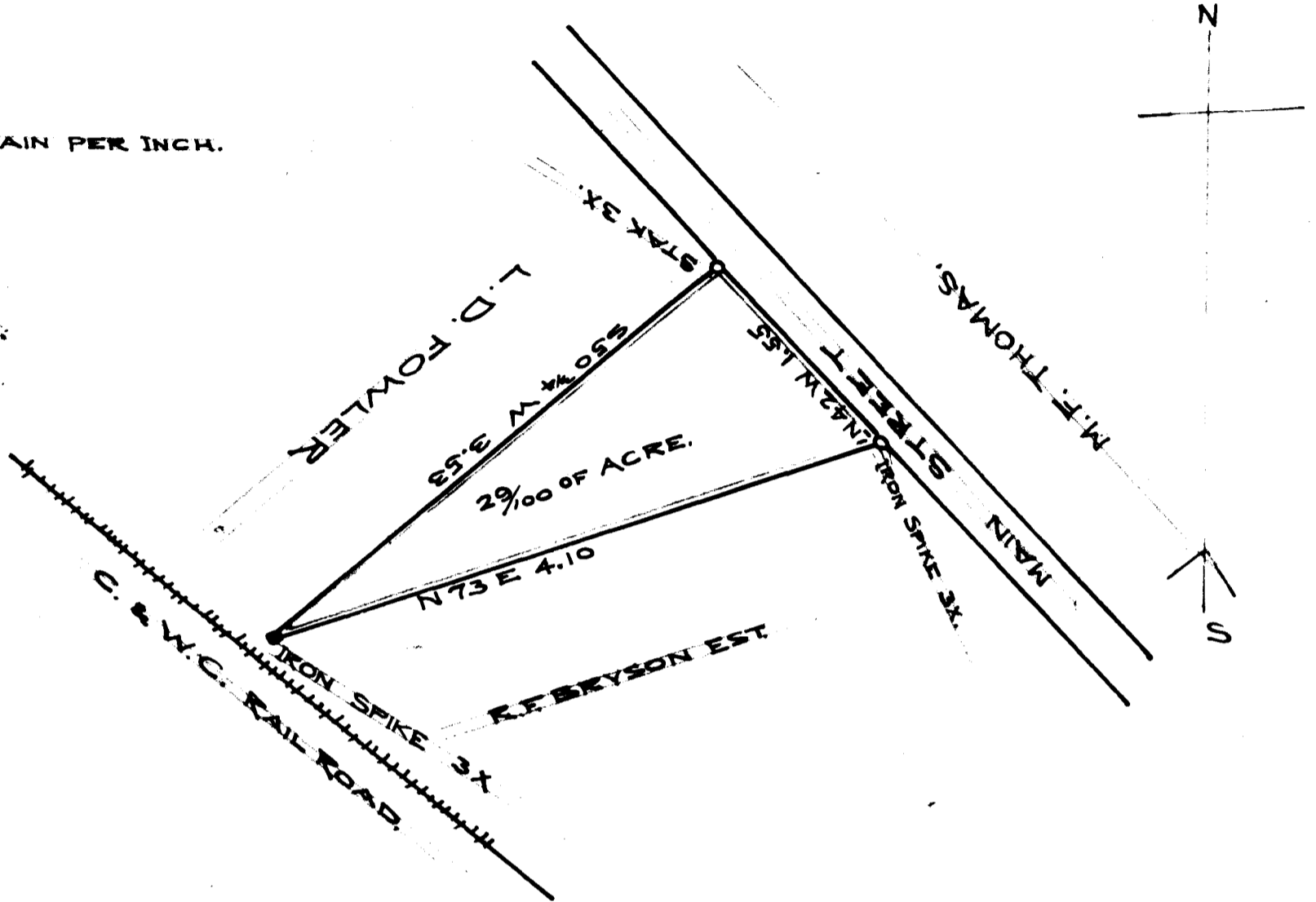


EX PARTE  
J.J. HARRELL

SCALE 1 CHAIN PER INCH.



STATE OF SOUTH CAROLINA  
COUNTY OF SPARTANBURG.

THE ABOVE PLOT REPRESENTS A LOT OF LAND IN  
THE TOWN OF WOODRUFF, SOLD BY L.D. FOWLER TO REV. J.J.  
HARRELL, AND CONTAINING TWENTY NINE HUNDREDTHS OF AN  
ACRE, MORE OR LESS. SURVEYED JAN. 27, 1909.

S.G. ANDERSON  
SURVEYOR

& EXAMINED  
REGISTERED, CERTIFIED, FEBY. 2<sup>ND</sup> 1910