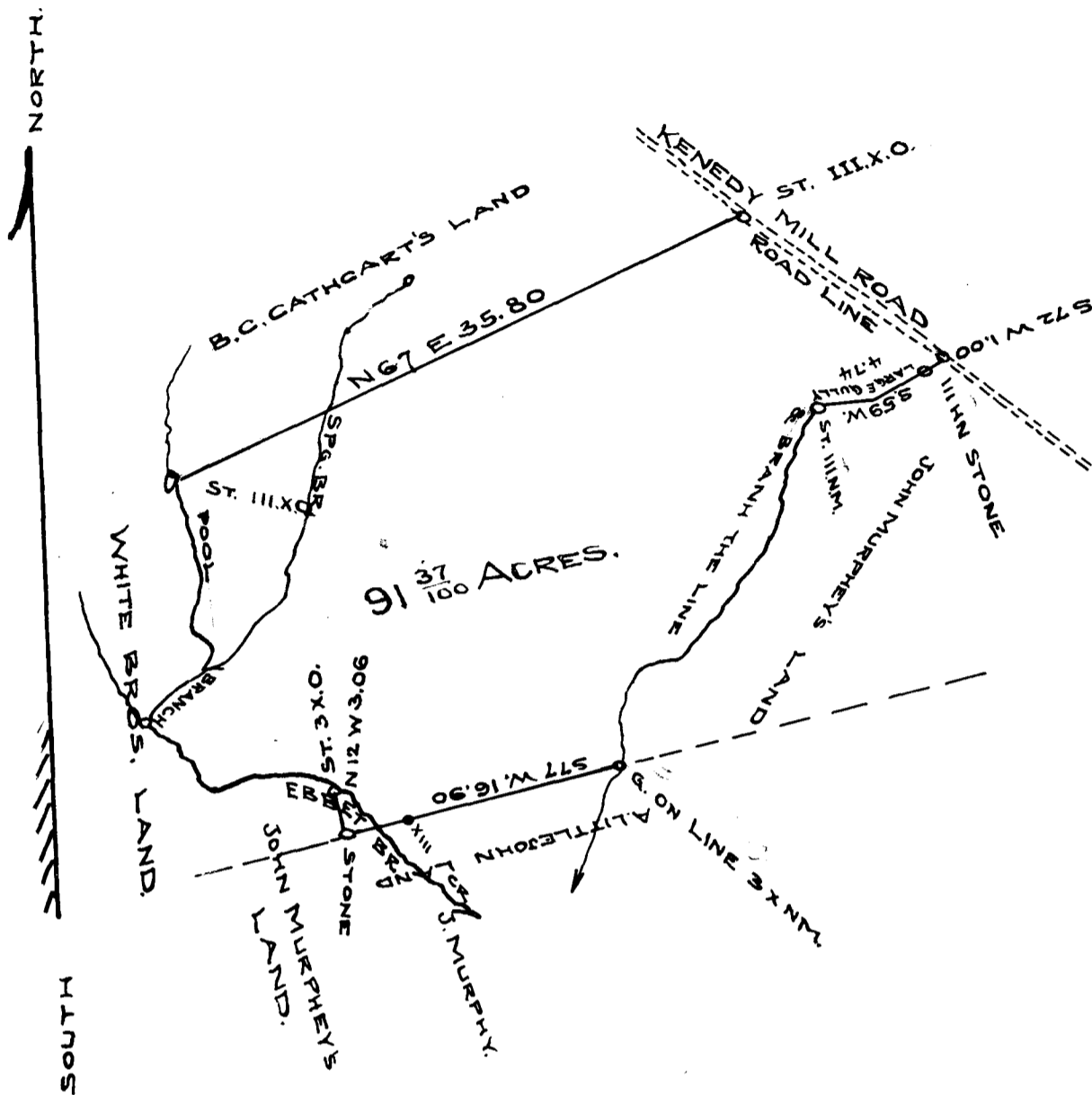


EX PARTE

J. D. PETTY



STATE OF SO. CAROLINA }
 SPARTANBURG COUNTY. }

THE ABOVE PLAT REPRESENTS A PORTION OF THE D.H. McDOWELL LAND SITUATED ON THE WATERS OF FAIR FOREST CREEK AND HAVING SUCH METES AND BOUNDS AS THE BLACK & RED LINES INDICATE AND CONTAINING NINETY ONE & ³⁷/₁₀₀ ACRES THE SAME MORE OR LESS, BEING SURVEYED & PLATTED THIS 22ND DAY DEC. 1909 MADE BY SCALE OF 10 CH. PER. INCH

W. J. WELLS (SURVEYOR)
 WHITE STONE, S.C.

REGISTERED, CERTIFIED & EXAMINED DEC. 29 - 1909.