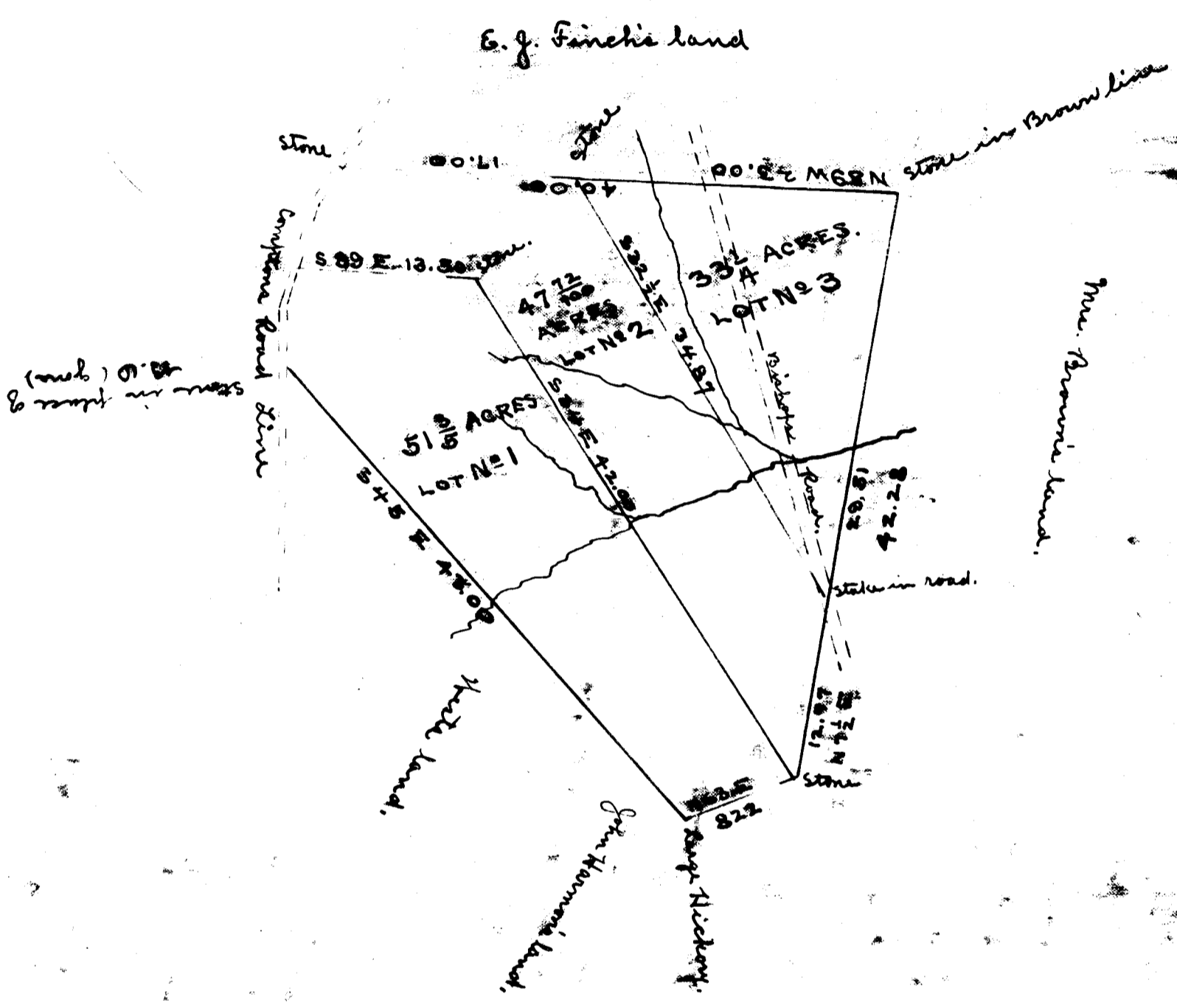


EX PARTE  
E. J. FINCH.



State of South Carolina  
Spartanburg County

By request of E. J. Finch, Esq. I have surveyed and subdivided  
land left by his mother to her children; and find it to contain 132.90 acres. And  
with such shape, metes and measurements as are set forth above.  
Witness my hand this 15th day of January, 1910.

Geo. H. Camp, D.S.

Scale of the chain to the inch

Registered, Certified & Examined January 5, 1910.