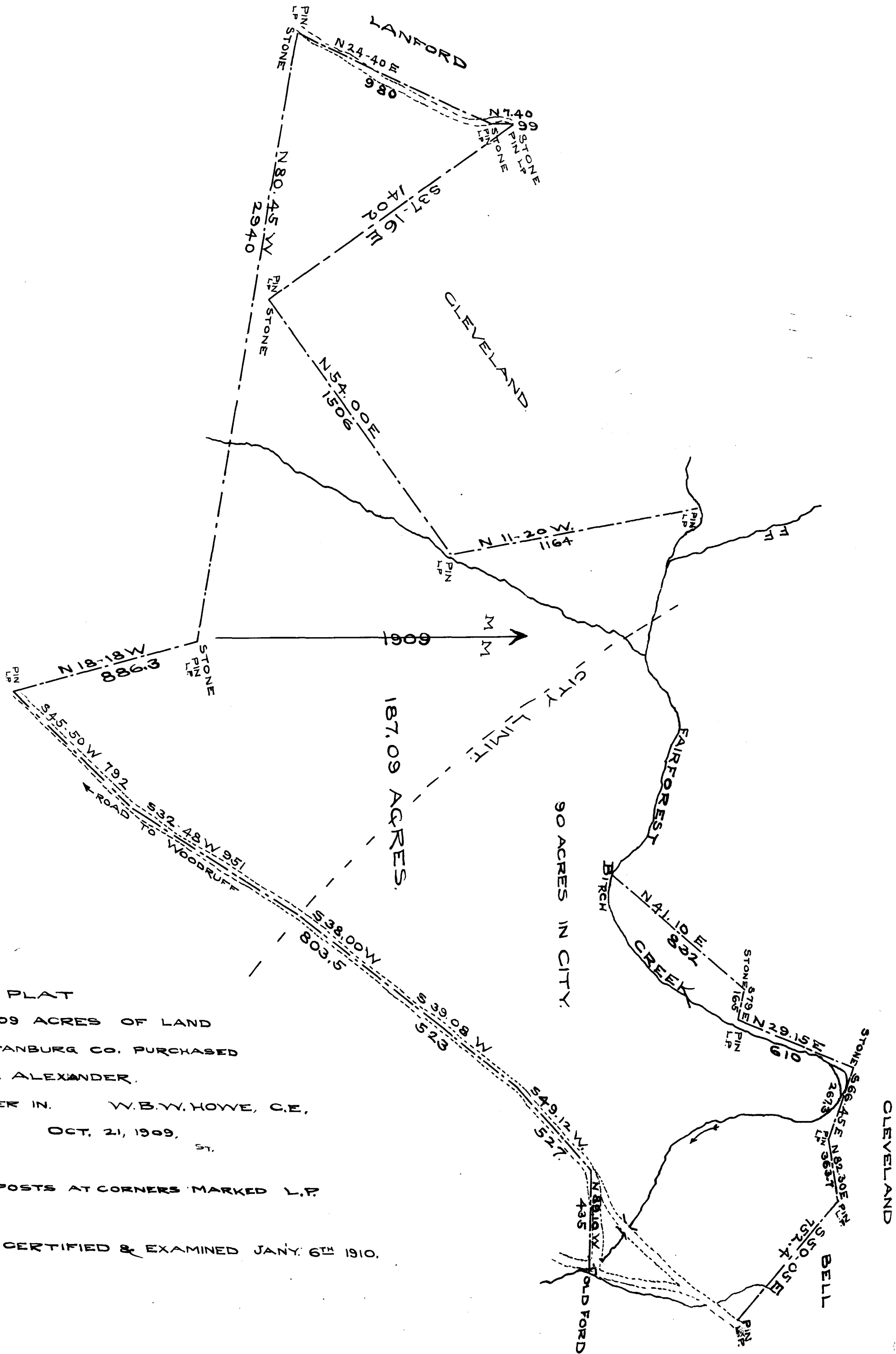


EX PARTE
W. ALEXANDER



PLAT

OF 187.09 ACRES OF LAND
IN SPARTANBURG CO. PURCHASED
BY J. W. ALEXANDER.

400 FT. PER IN. W.B.W. HOWE, C.E.,

OCT. 21, 1909.

LOCUST POSTS AT CORNERS MARKED L.P.

REGISTERED, CERTIFIED & EXAMINED JAN. 6TH 1910.