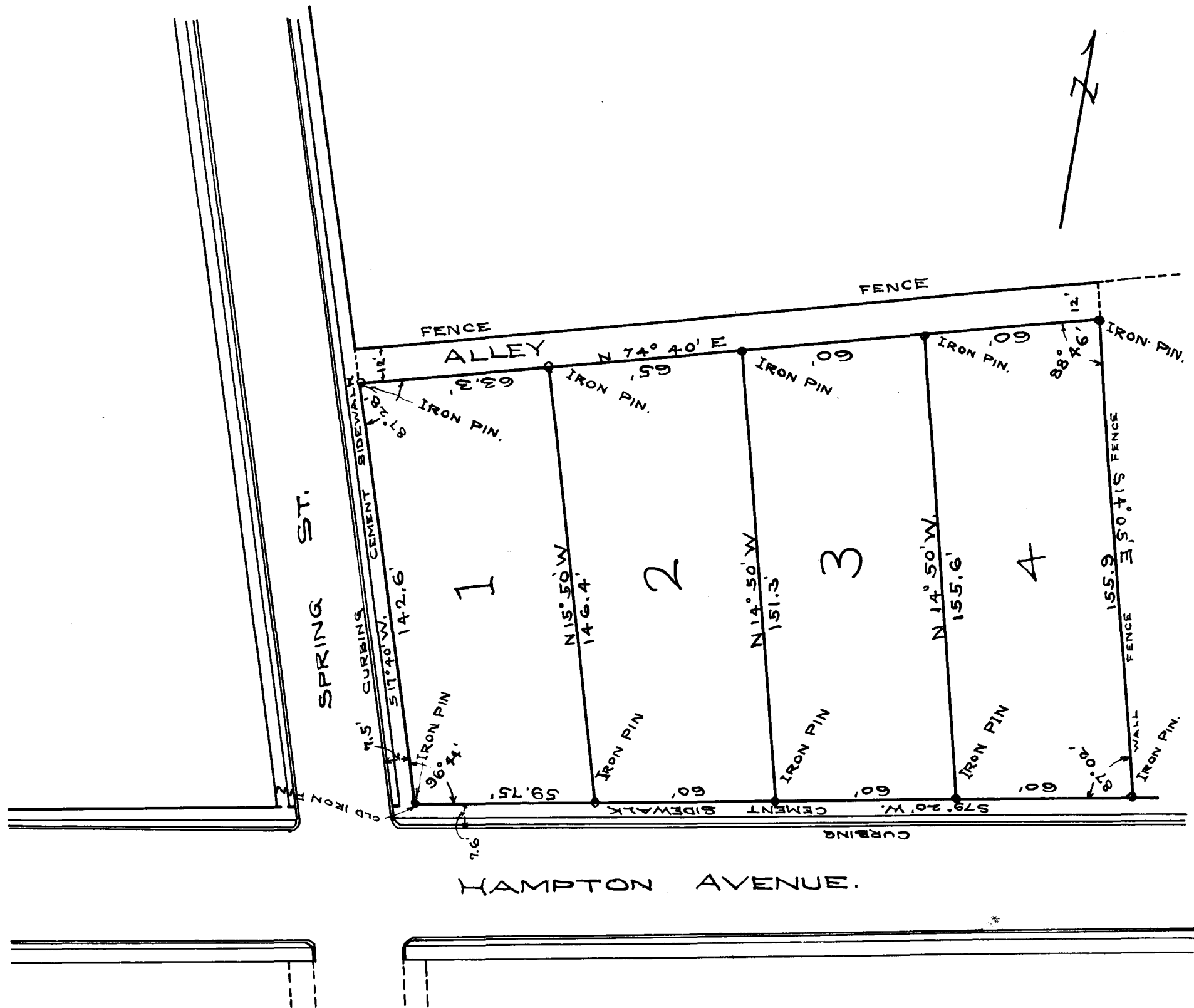


EX PARTE  
 P.V. BOMAR & A. SMITH



SURVEY & PLAT  
 OF  
 A SUBDIVISION OF 2 LOTS OF JNO. E. BOMAR ESTATE  
 (FORMERLY FRONTING ON SPRING ST. AND RUNNING BACK WITH HAMPTON AV.)  
 (SEE RECORDED PLAT.)  
 RE-SURVEYED TO FRONT ON HAMPTON AV.  
 RE-SURVEYED JAN. 5, 1910  
 H. STRIBLING, SUR.  
 SPARTANBURG, S. C.  
 SCALE 1 IN. = 40 FEET.  
 REGISTERED, CERTIFIED & EXAMINED JAN. 7, 1910