

148

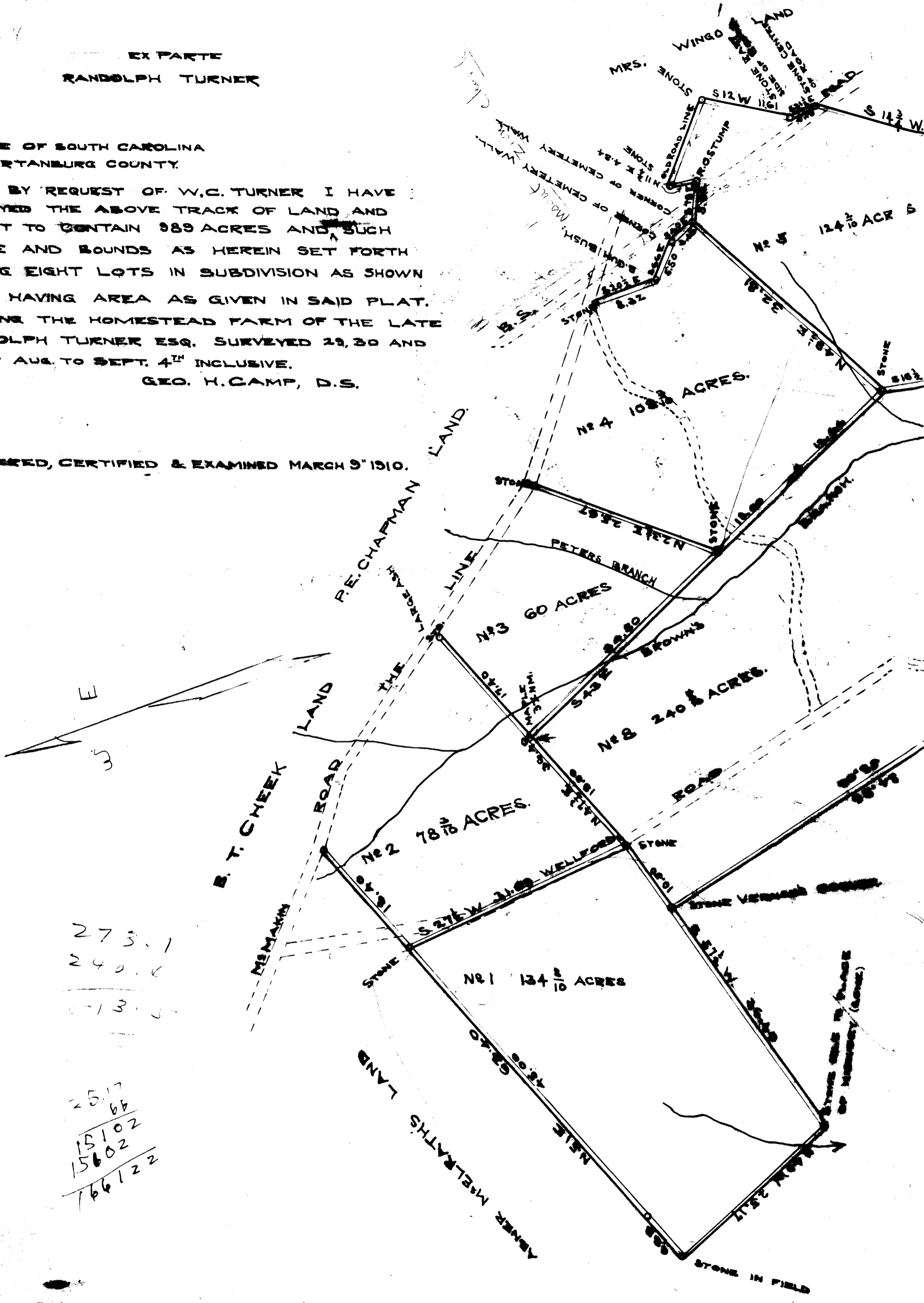
EX PARTE  
RANDOLPH TURNER

STATE OF SOUTH CAROLINA  
SPARTANBURG COUNTY.

BY REQUEST OF W.C. TURNER I HAVE  
SURVEYED THE ABOVE TRACK OF LAND AND  
FIND IT TO CONTAIN 989 ACRES AND SUCH  
SHAPE AND BOUNDS AS HEREIN SET FORTH  
HAVING EIGHT LOTS IN SUBDIVISION AS SHOWN  
EACH HAVING AREA AS GIVEN IN SAID PLAT.  
IT BEING THE HOMESTEAD FARM OF THE LATE  
RANDOLPH TURNER ESQ. SURVEYED 29, 30 AND  
31<sup>ST</sup> OF AUG. TO SEPT. 4<sup>TH</sup> INCLUSIVE.

GEO. H. CAMP, D.S.

REGISTERED, CERTIFIED & EXAMINED MARCH 9<sup>TH</sup> 1910.



273.1  
 240.6  
 13.5  
 ---  
 25.17  
 66  
 15102  
 15602  
 766122

148

