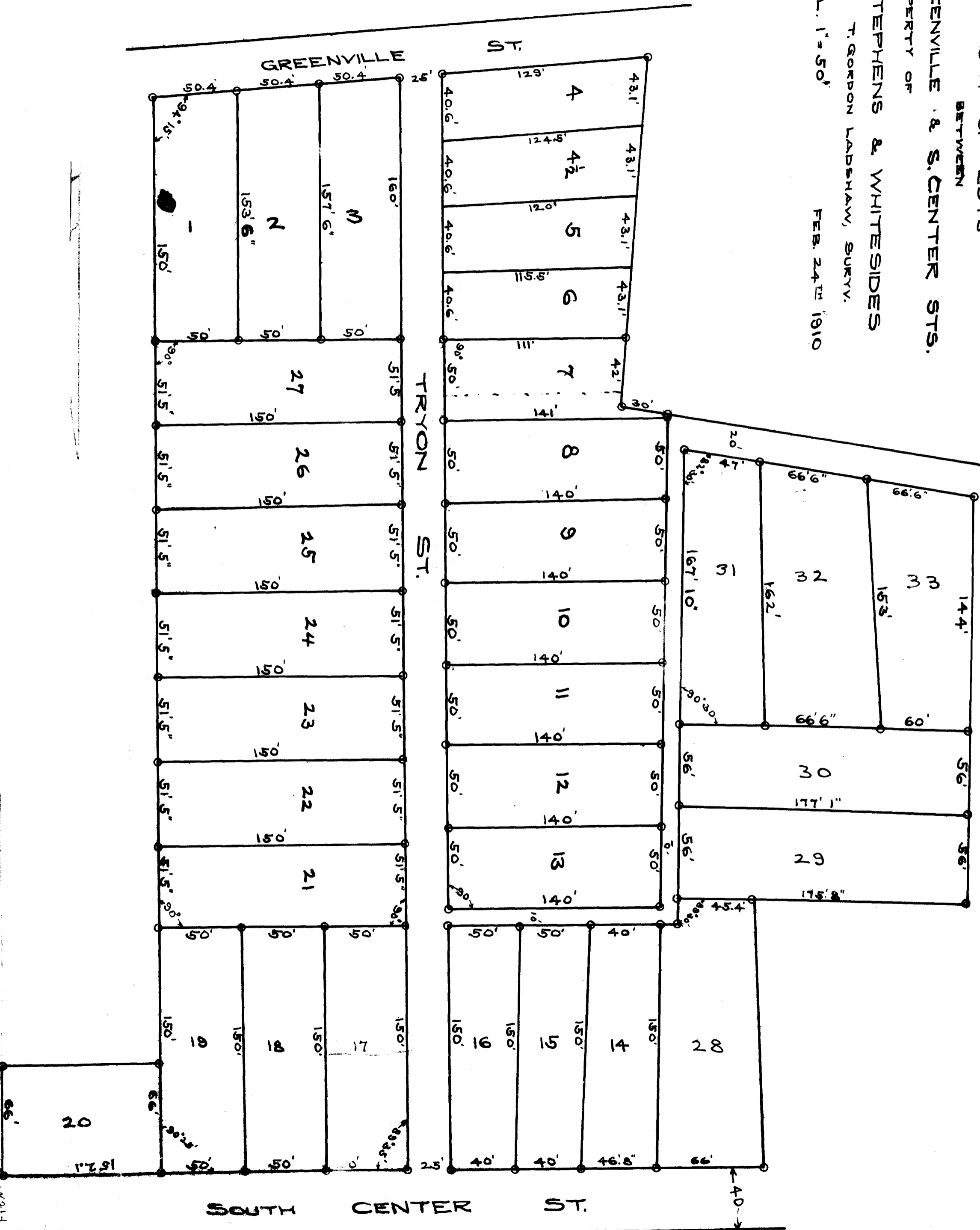


EX PARTE  
STEPHENS & WHITESIDES

PLAT OF LOTS  
BETWEEN  
GREENVILLE & S. CENTER STS.  
PROPERTY OF  
STEPHENS & WHITESIDES  
T. GORDON LABSHAW, SURVY.

SCL. 1" = 50'  
FEB. 24TH 1910



REGISTERED, CERTIFIED & EXAMINED APRIL 26TH 1910