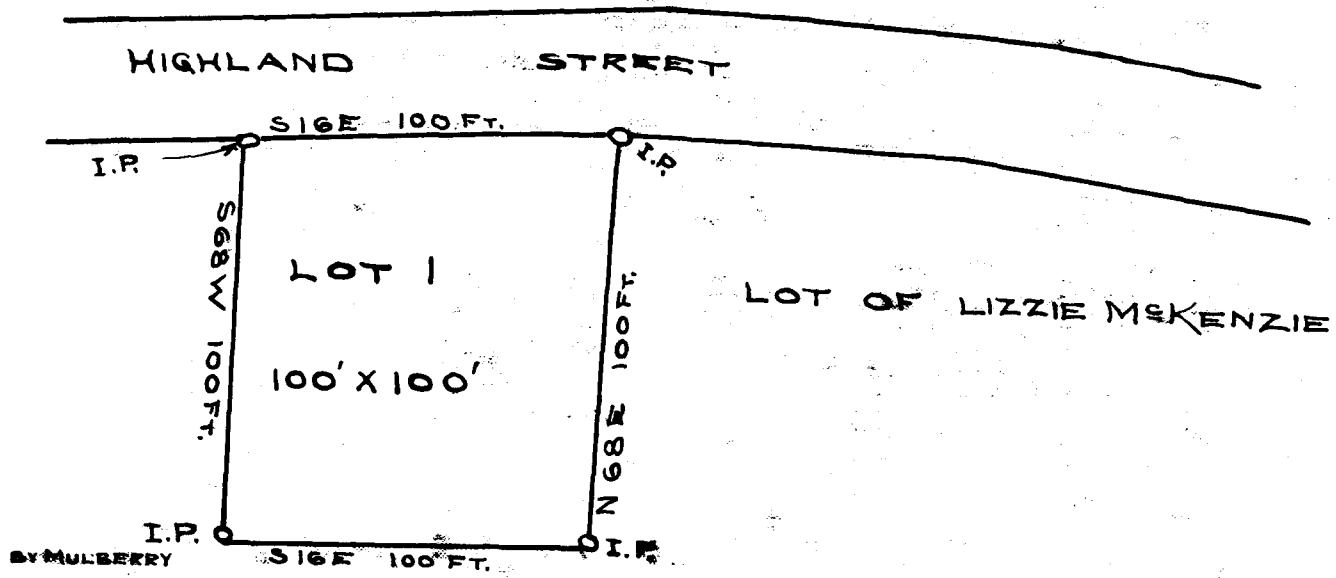


EX PARTE  
LIZZIE MCKENZIE



DESCRIPTION OF LOT. - HIGHLAND ST.  
BEGINNING ON I.P. WEST SIDE OF HIGHLAND ST. AND RUNNING  
THENCE S 68 W 100 FT. TO I.P. BY MULBERRY 3 X 0. THENCE S 16 E  
100 FT. TO I.P. IN COTTON PATCH. THENCE N 68 E 100 FT.  
TO I.P. ON HIGHLAND ST. THENCE WITH HIGHLAND ST. 100 FT.  
TO BEGINNING.

SURVEYED SEPT. 1<sup>ST</sup> 1909.

THOS. D. LADSHAW.

REGISTERED, CERTIFIED & EXAMINED MAY 5<sup>TH</sup> 1910