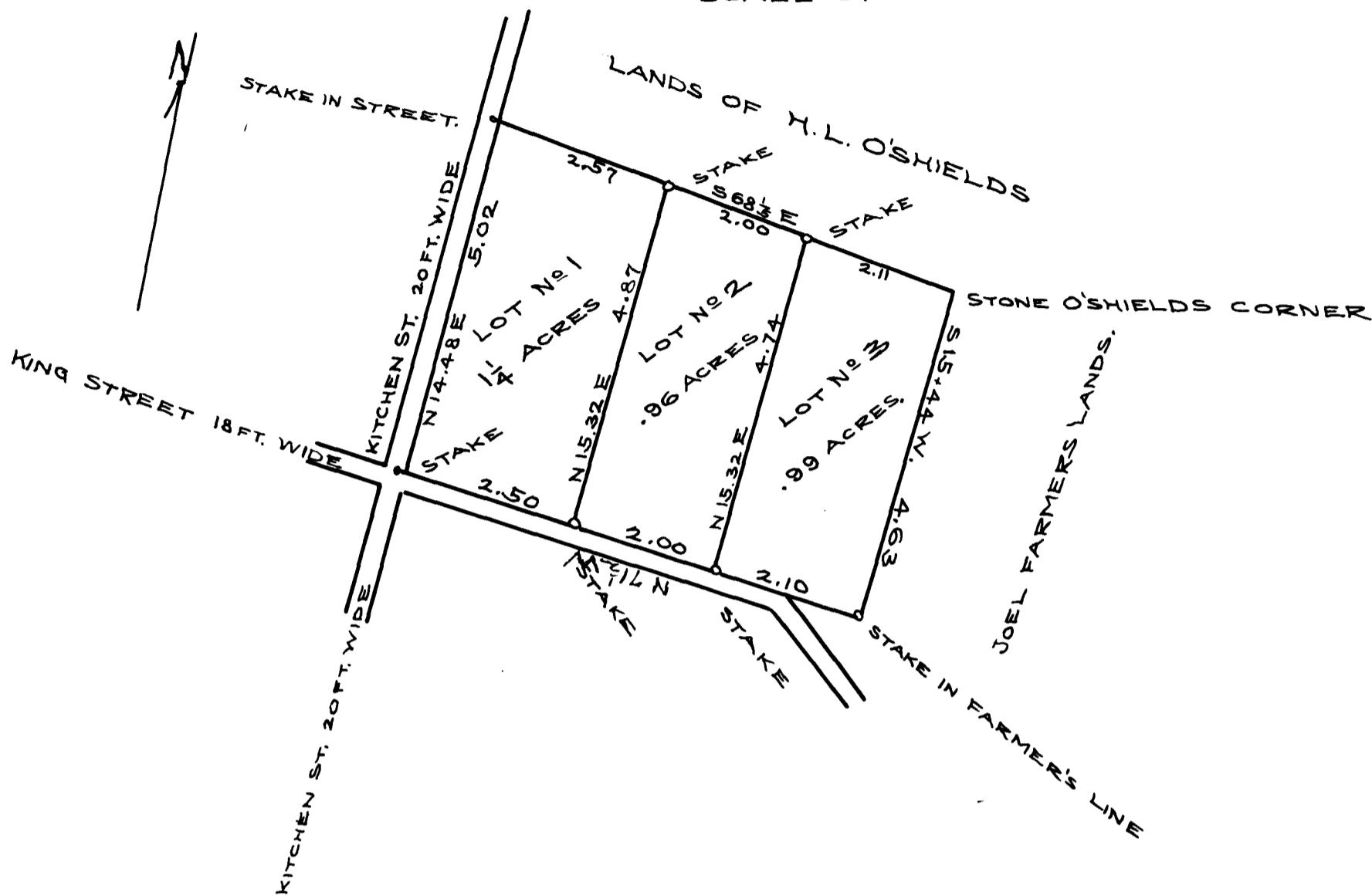


168

EX PARTE  
DR. JNO. W. BRAMLETT ESTATE

SCALE OF TWO CHAINS PER INCH.



State of South Carolina  
Spartanburg County.

The above plat correctly represents a lot of land belonging to the estate of Dr. John W. Bramlett Dec'd. It is situate in the town of Campobello, S.C. and is bounded on the north east by lands of H. L. O'Shields, the south east of lands of Joel Farmer, on south west by the north edge of King Street and on the north west by the center of Kitchen Street. I have divided it into three lots - lot No. 1 contains One and one fourth acres, No. 2 contains ninety six hundredths of an acre, No. 3 contains ninety nine hundredths of an acre, as shown by plat.

Surveyed by me Oct. 1<sup>st</sup> 1909.

M. E. Johnson

Registered, Certified and Examined June 29<sup>th</sup> 1910