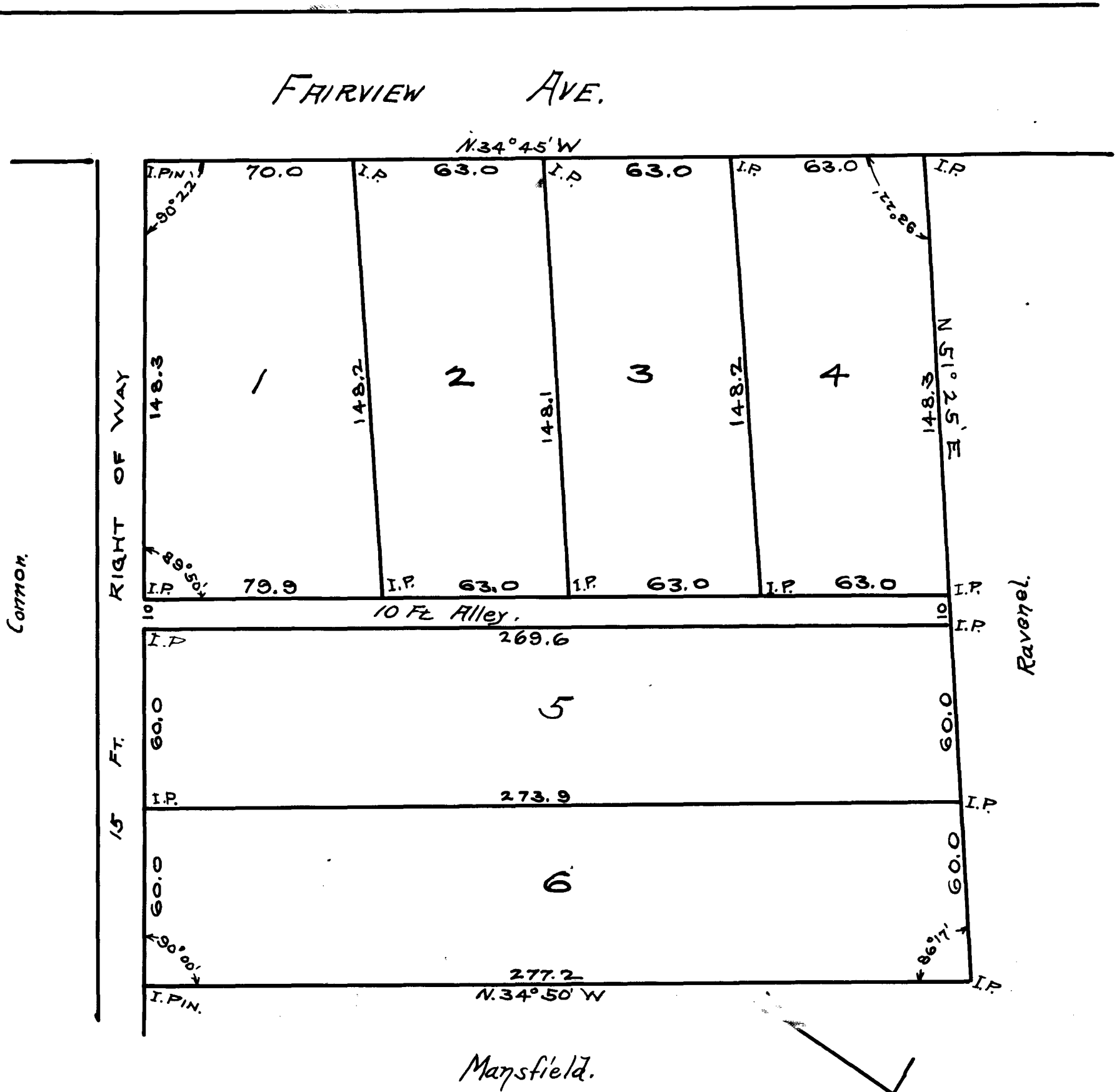


172

EX PARTE  
M. HELDMAN ESTATE



A MAP  
OF THE M. HELDMAN PROPERTY,  
SPARTANBURG, S.C. Subdivided June 22, 1910.

Paul H. Nash, Civ. Eng.

Scale 1" = 40'

REGISTERED, CERTIFIED & EXAMINED JULY 21, 1910