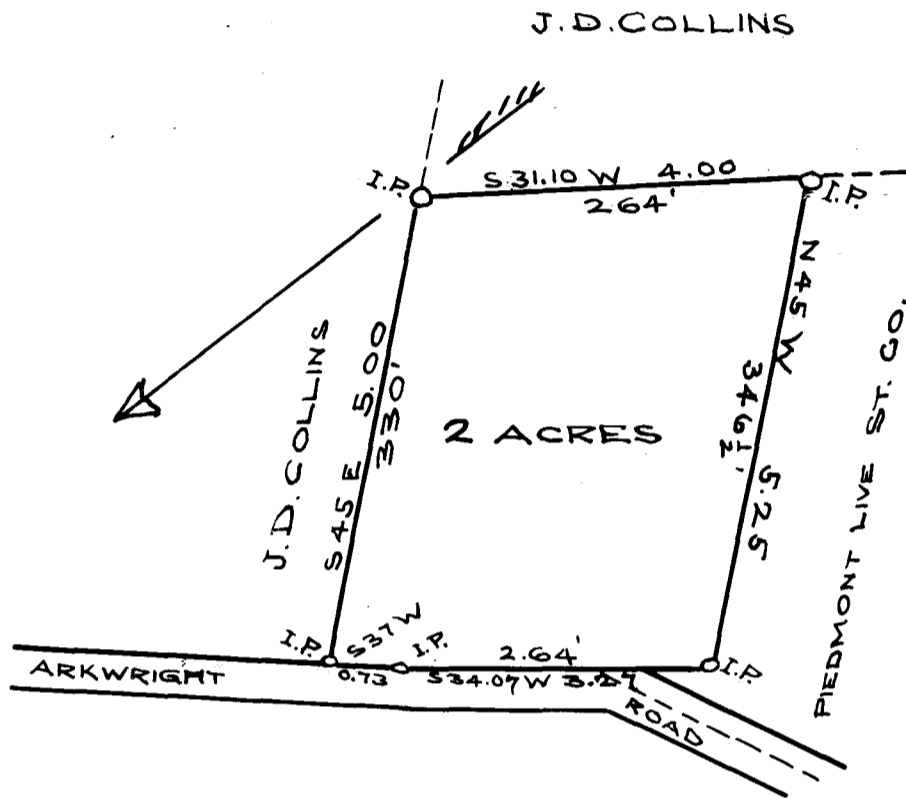


174

174

EX PARTE
J. D. COLLINS

NOTE:
FOR DEED SEE D.B. "4-R" PAGE '791"



SCALE 2 CHS. PER IN.

STATE OF SO. CAROLINA }
SPARTANBURG CO.

I HEREBY CERTIFY THE ANNEXED PLAT TO BE
CORRECT IN MAGNETIC DIRECTION METES & BOUNDS
CONVEYED TO J. D. COLLINS BY THE PIEDMONT LIVE-
STOCK CO. CONTAINS 2 ACRES. SURVEYED 6/16/1910.

THOS. D. LADSHAW,
ENGR. & SURV.

REGISTERED, CERTIFIED & EXAMINED JULY 18-1910.