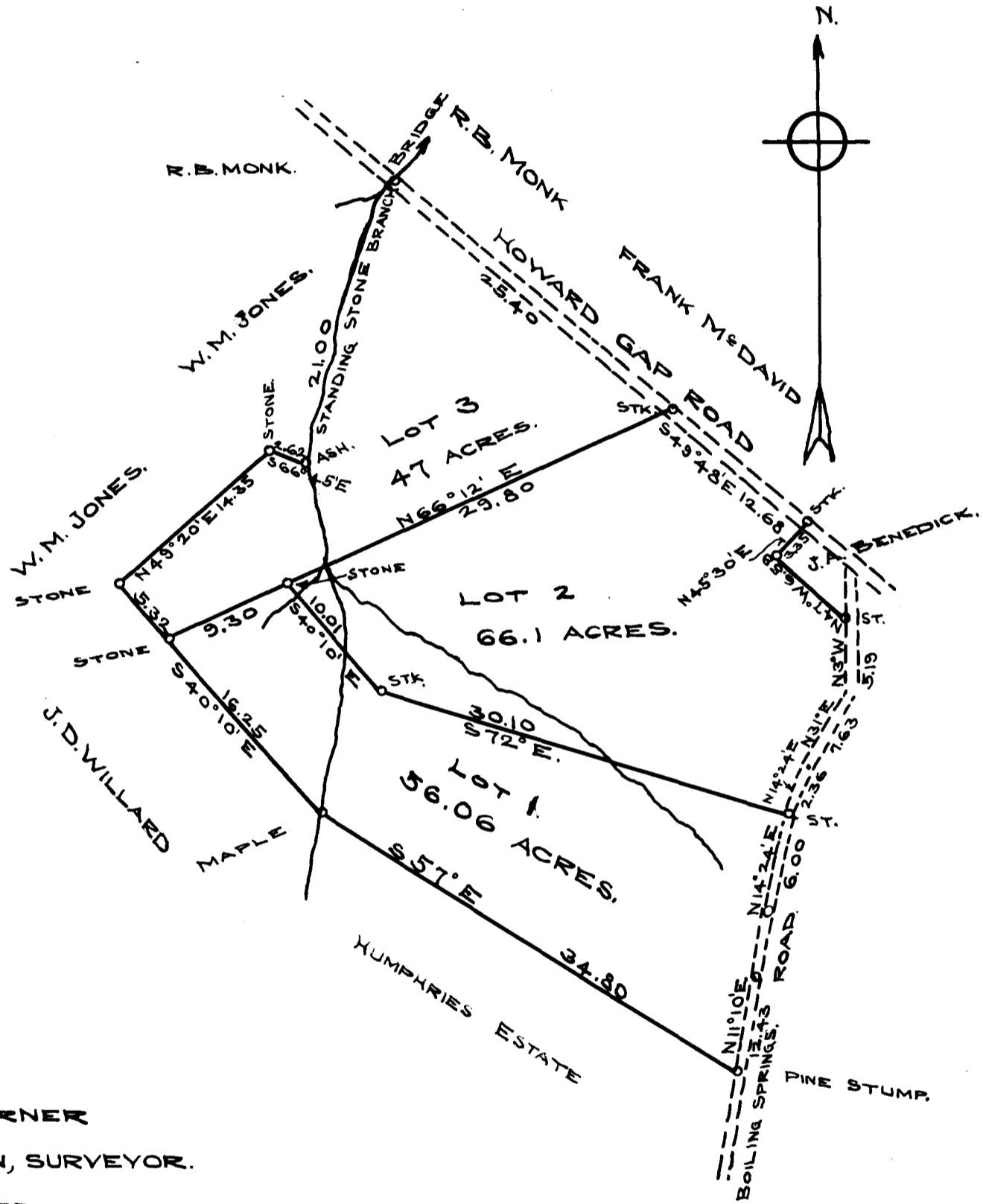


W. K. TURNER, ET AL.
PLFF'S.

-Vs-

ALICE TURNER, ET AL
DEFTS.



ESTATE OF FRANCES TURNER
SURVEYED BY T.E. JOHNSON, SURVEYOR.

DEC. 8, 1909. 169.16 ACRES

COPIED FROM ORIGINAL. FOR S. T. LANHAM, MASTER OF SPARTANBURG

COUNTY, BY PAUL H. NASH, CIV. ENG. OCT. 3, 1910

SCALE 1" = 10 CHAINS.

REGISTERED, CERTIFIED & EXAMINED NOV. 1, 1910.