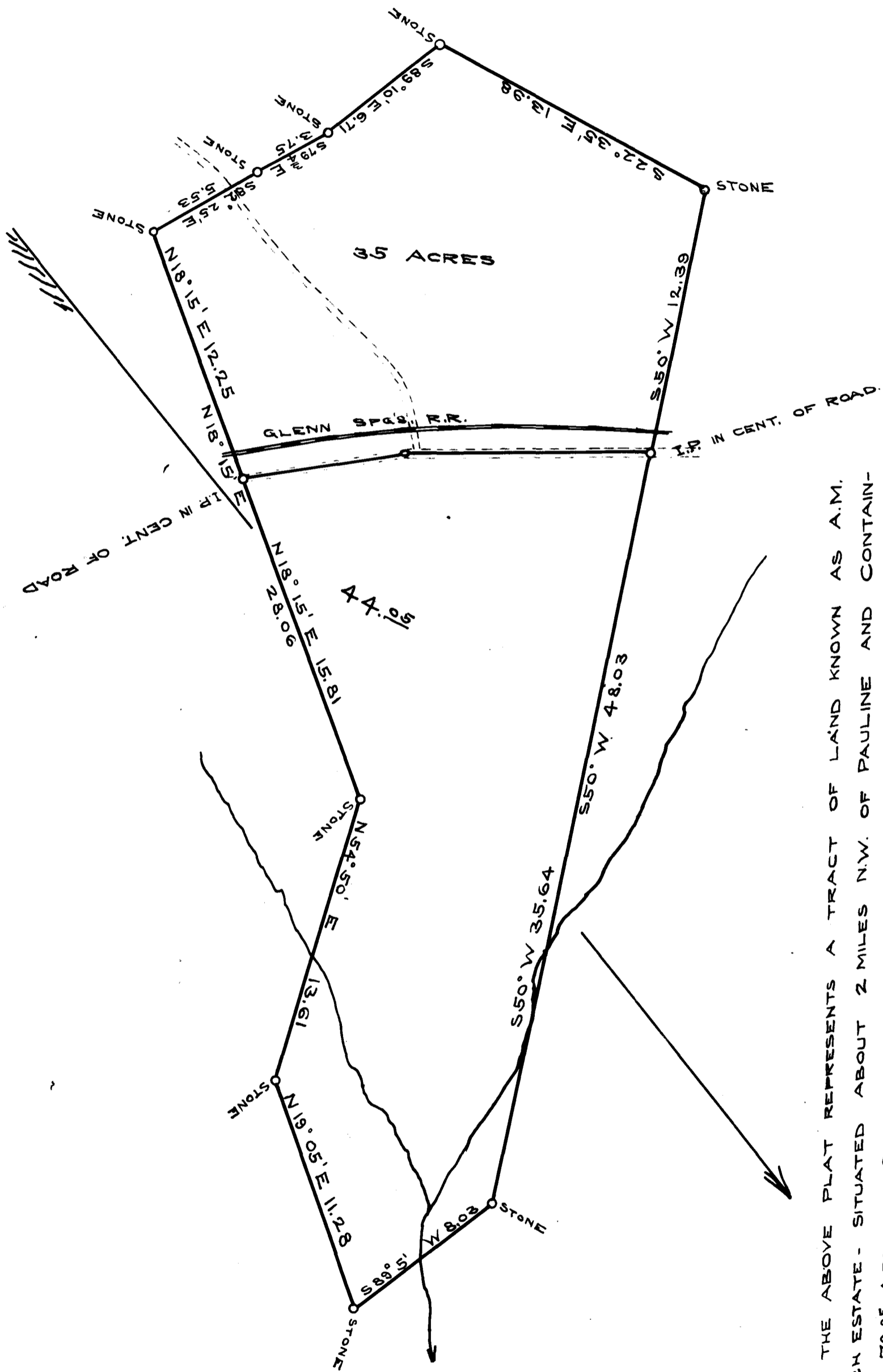


M. A. FINCH, ET AL,
PLFFS.

-VS-

W. D. FINCH, ET AL
DEFTS.



THE ABOVE PLAT REPRESENTS A TRACT OF LAND KNOWN AS A.M. FINCH ESTATE - SITUATED ABOUT 2 MILES N.W. OF PAULINE AND CONTAINING 79.05 ACRES. SURVEYED FOR A.E. FINCH AND W.D. FINCH. DEC. 15 1909
SCALE 1" = 5 CHAINS.

W.W. HARRIS } SURVEYORS.
D. N. HARRIS }
CHAINMAN A.E. FINCH - M. A. FINCH.

REGISTERED, CERTIFIED & EXAMINED NOV. 1st 1910