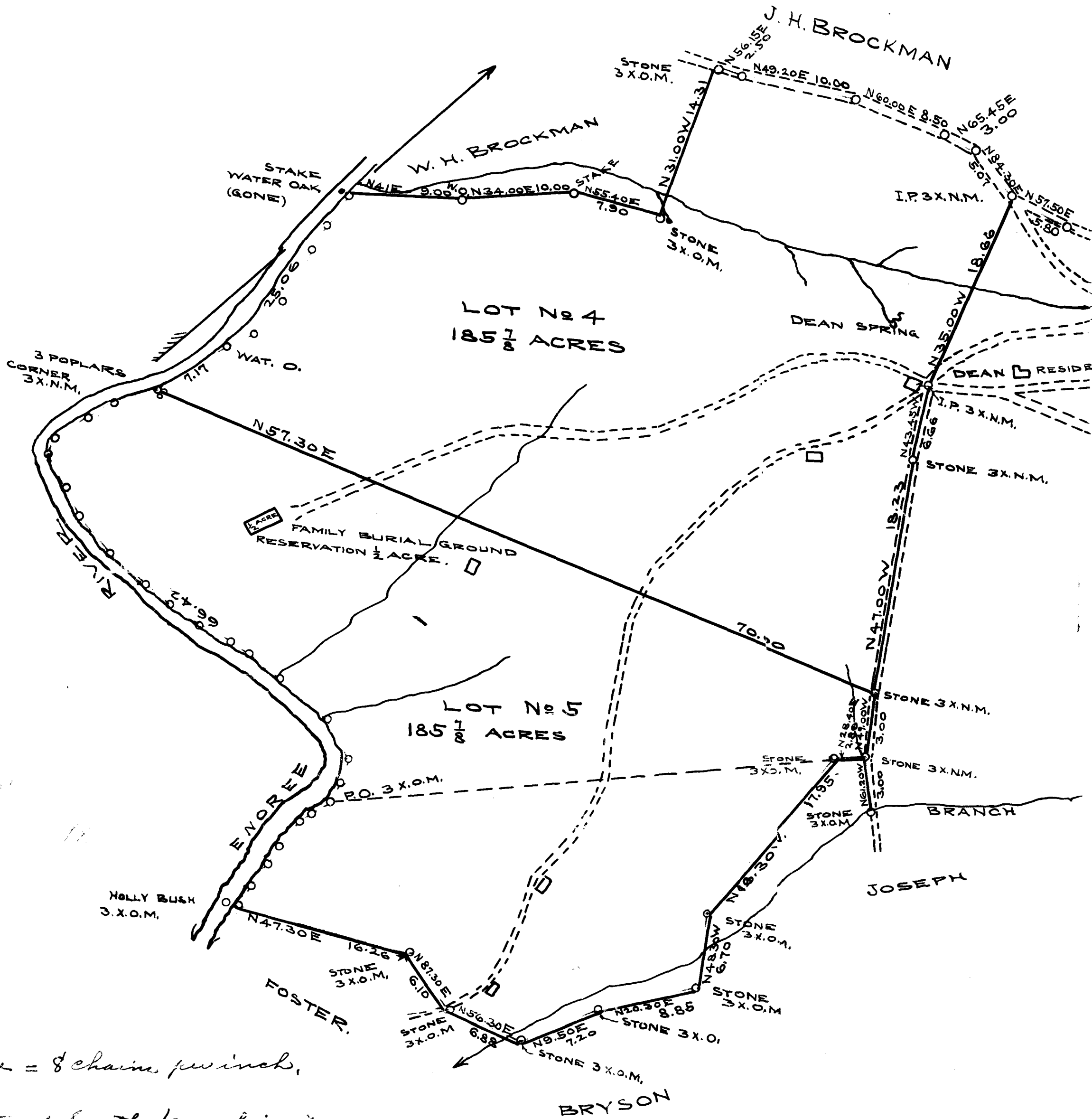


EX PARTE
GEO. B. DEAN ESTATE



Scale = 8 chains per inch.

State of South Carolina }
County of Spartanburg } I hereby certify that the above plat
represents the correct magnetic direction, metes and bounds of a
tract of lands belonging to the Estate of Geo. B. Dean situated on
the Enoree River about 5 miles below Pelman Mills, County
& State aforesaid.

Surveyed and subdivided Nov. 30 to Dec. 6, 1909 containing
946 ⁷/₁₀ Acres

Ludshaw Bros.
Eng'rs & Surv'rs.

Registered, Certified & Examined Oct. 10, 1910.