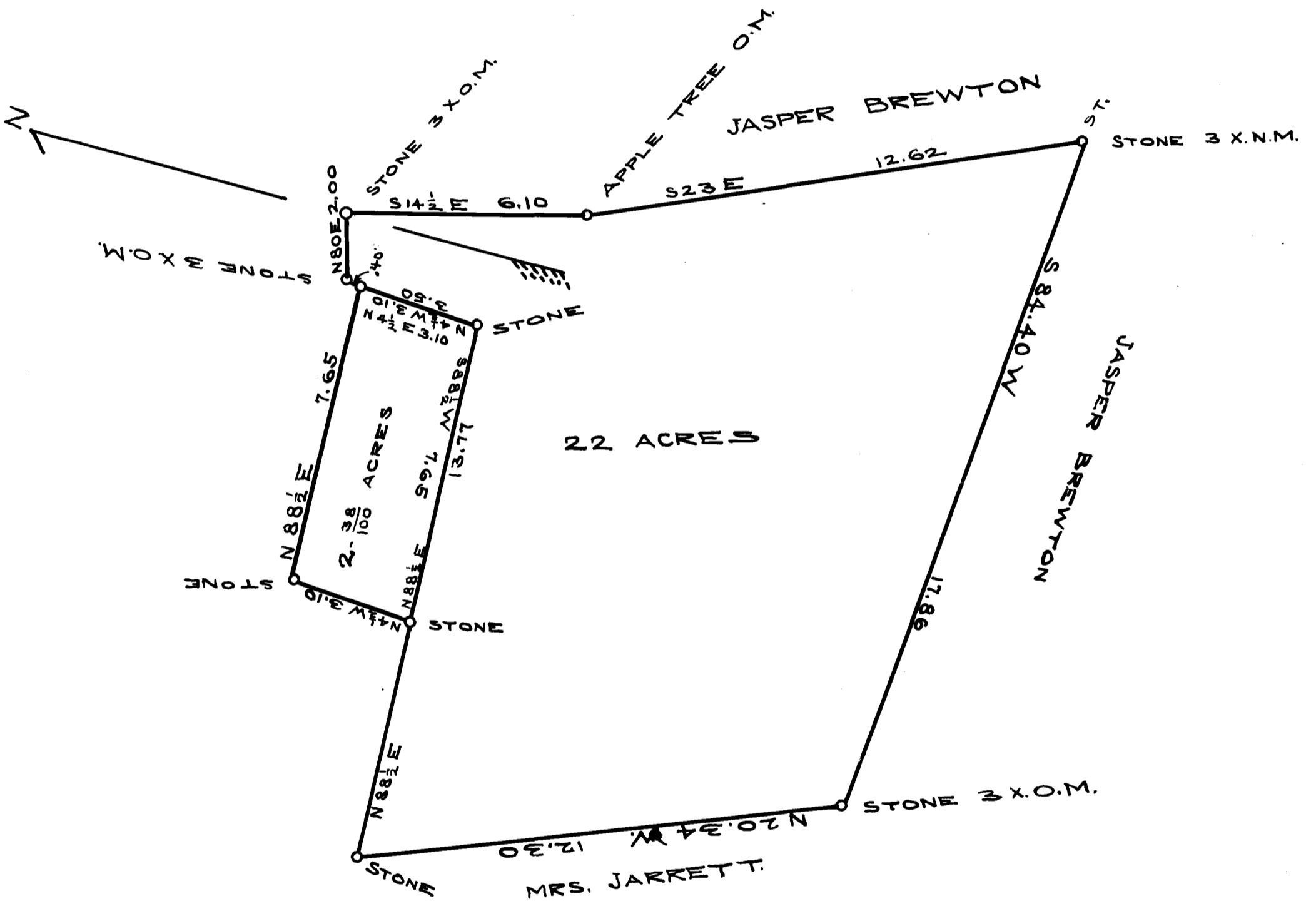


EX PARTE  
J. T. DAVIS



STATE OF SOUTH CAROLINA }  
COUNTY OF SPARTANBURG }

AT THE REQUEST OF J.S.HAYNES I HAVE RESURVEYED FOR MRS. M.A.HAYNES TWO CERTAIN LOTS OF LAND SITUATED ABOUT 5 MILES FROM THE CITY OF SPARTANBURG IN THE STATE AND COUNTY AFORESAID HAVING SUCH AREA SHAPE METES, AND BOUNDS AS ANNEXED SHOWS.

SEPT. 1<sup>ST</sup> 1905.

T. L. SHIPPEY, SURVEYOR

SCALE 1 IN. = 3 CH.

REGISTERED, CERTIFIED & EXAMINED OCT. 13 - 1910.