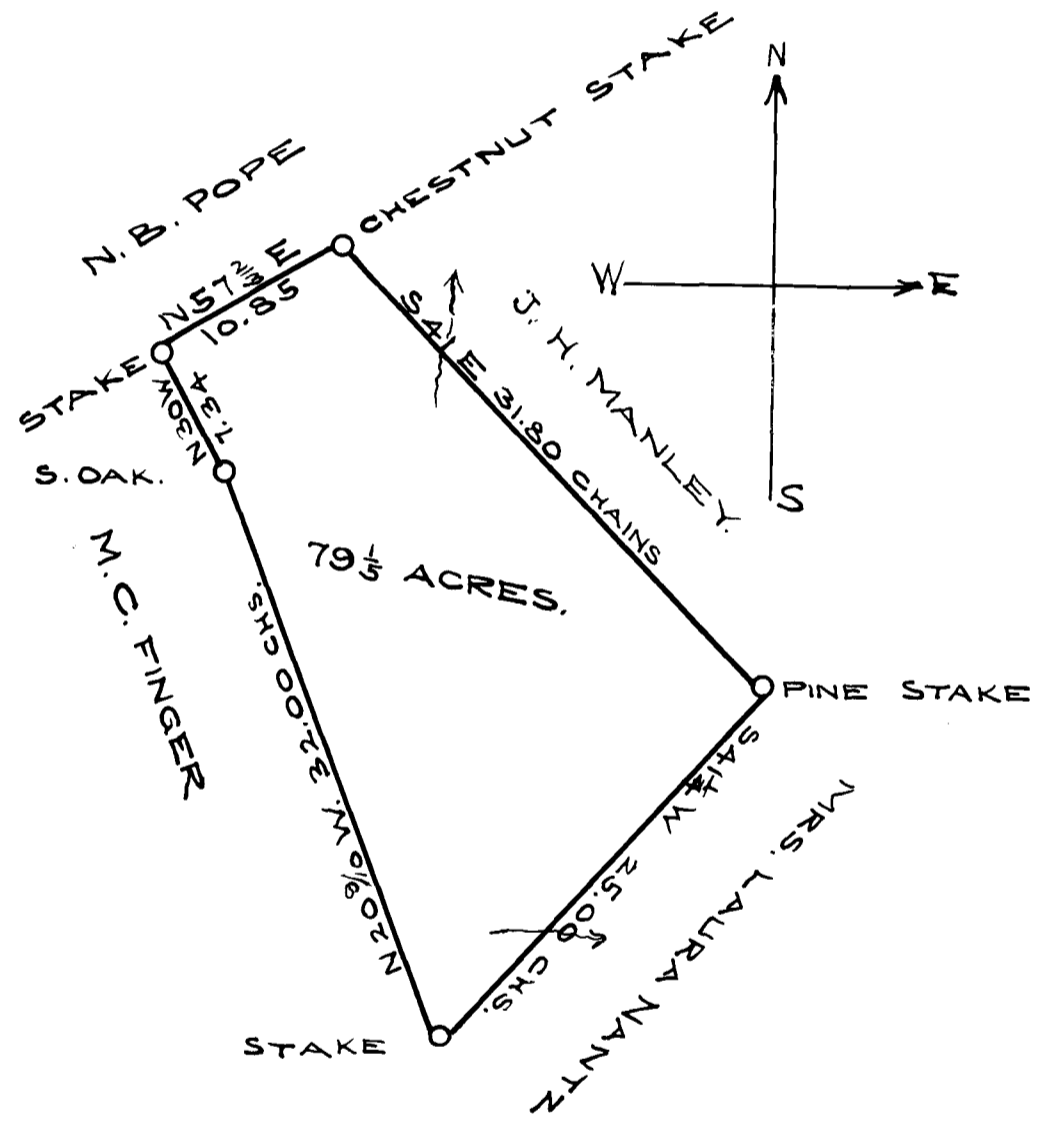


EX PARTE
D. C. BURNETT

PLAT
OF
D. C. BURNETT'S LAND
S'PTG. CO. STATE OF S. C.
TEN CHAINS PER INCH.



THE ABOVE PLAT REPRESENTS A TRACT OF LAND BELONGING TO D. C. BURNETT AS SURVEYED BY T. E. JOHNSON EXCEPT THE LINE S 41 E 31.80, WHICH WAS MADE BY ME, AND BOUNDED BY LANDS OF THE ABOVE NAMED

C. F. JOHNSON
SURVEYOR