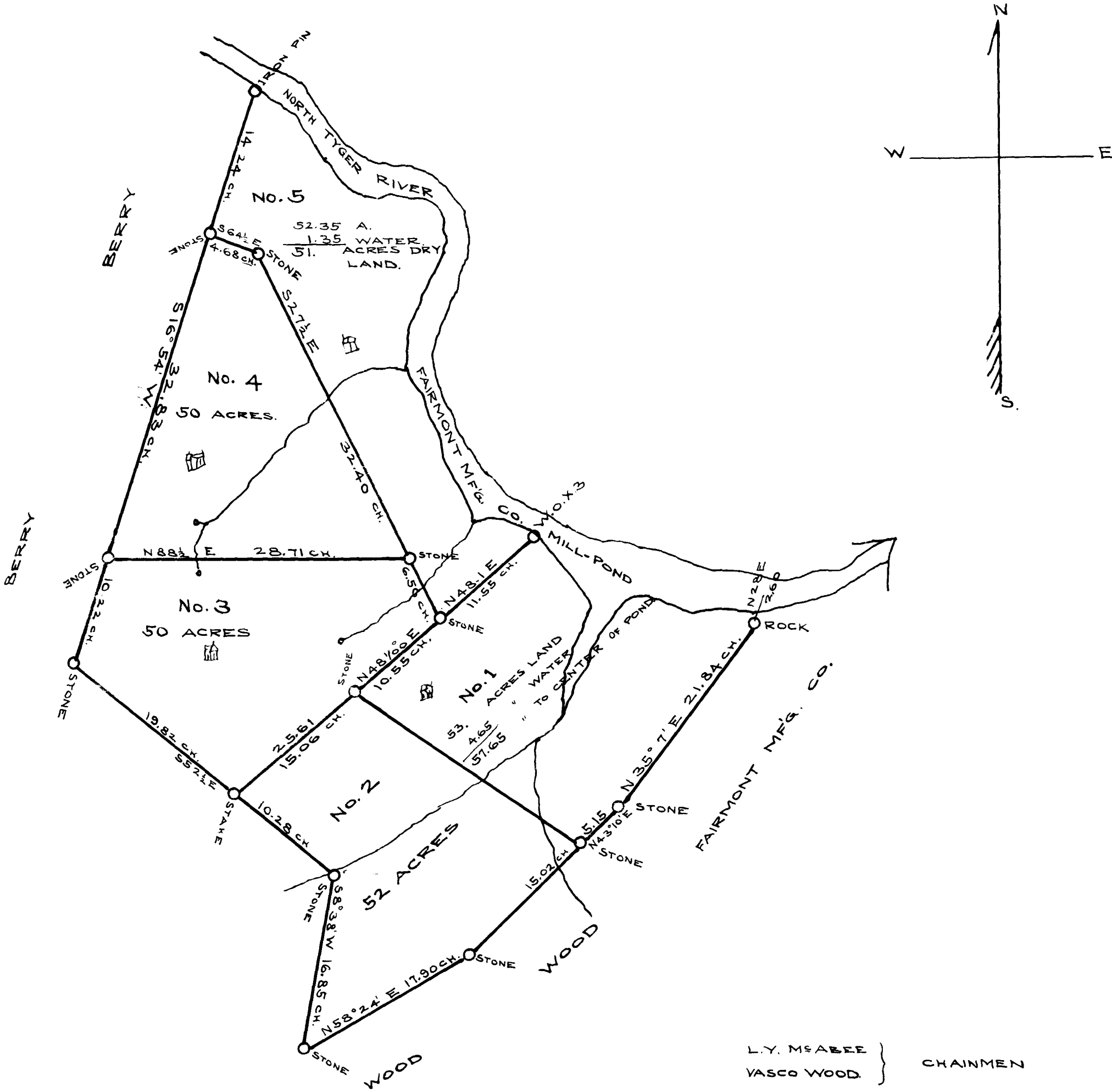


EX PARTE  
 FAIRMONT M'FG. CO.

SCALE OF 10 CHAINS PER INCH



RE-SURVEYED FOR FAIRMONT MANUFACTURING CO.  
 262 ACRES OF LAND AND DIVIDED IT INTO FIVE  
 LOTS IN THE MANNER SHOWN BY THE ABOVE  
 PLAT.  
 NOV. 28-1910.

T. E. JOHNSON  
 SURVEYOR.

REGISTERED, CERTIFIED & EXAMINED DEC. 2-1910