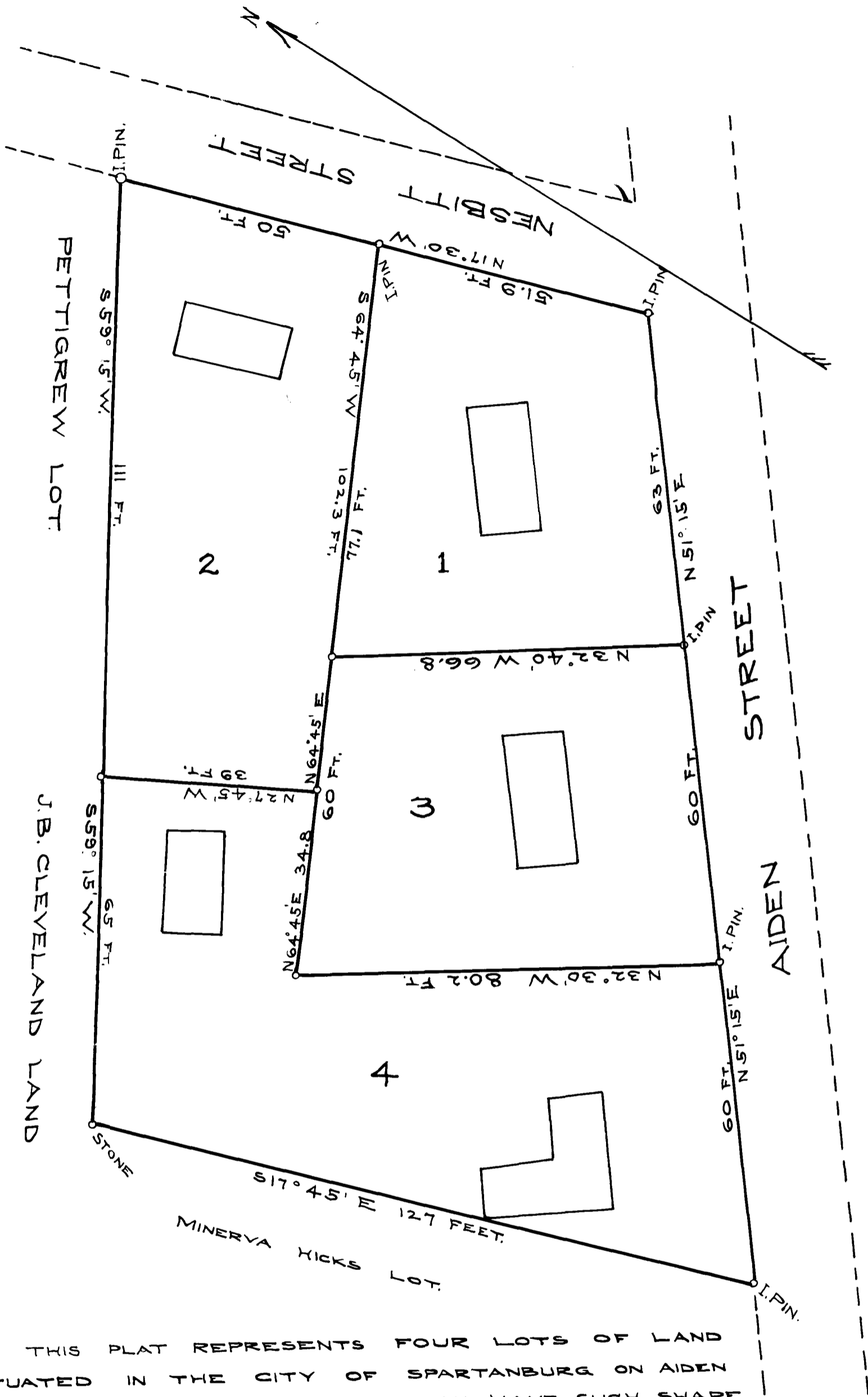


EX PARTE
W. R. BROWN



THIS PLAT REPRESENTS FOUR LOTS OF LAND SITUATED IN THE CITY OF SPARTANBURG ON AIDEN AND NESBITT STREETS AND WHICH HAVE SUCH SHAPE AND BOUNDARIES AS HERE SHOWN. SURVEYED FOR W. R. BROWN THIS 8TH DAY OF SEPTEMBER 1910
W. W. HARRIS
SURVEYOR.

REGISTERED, CERTIFIED & EXAMINED DEC. 3-1910.