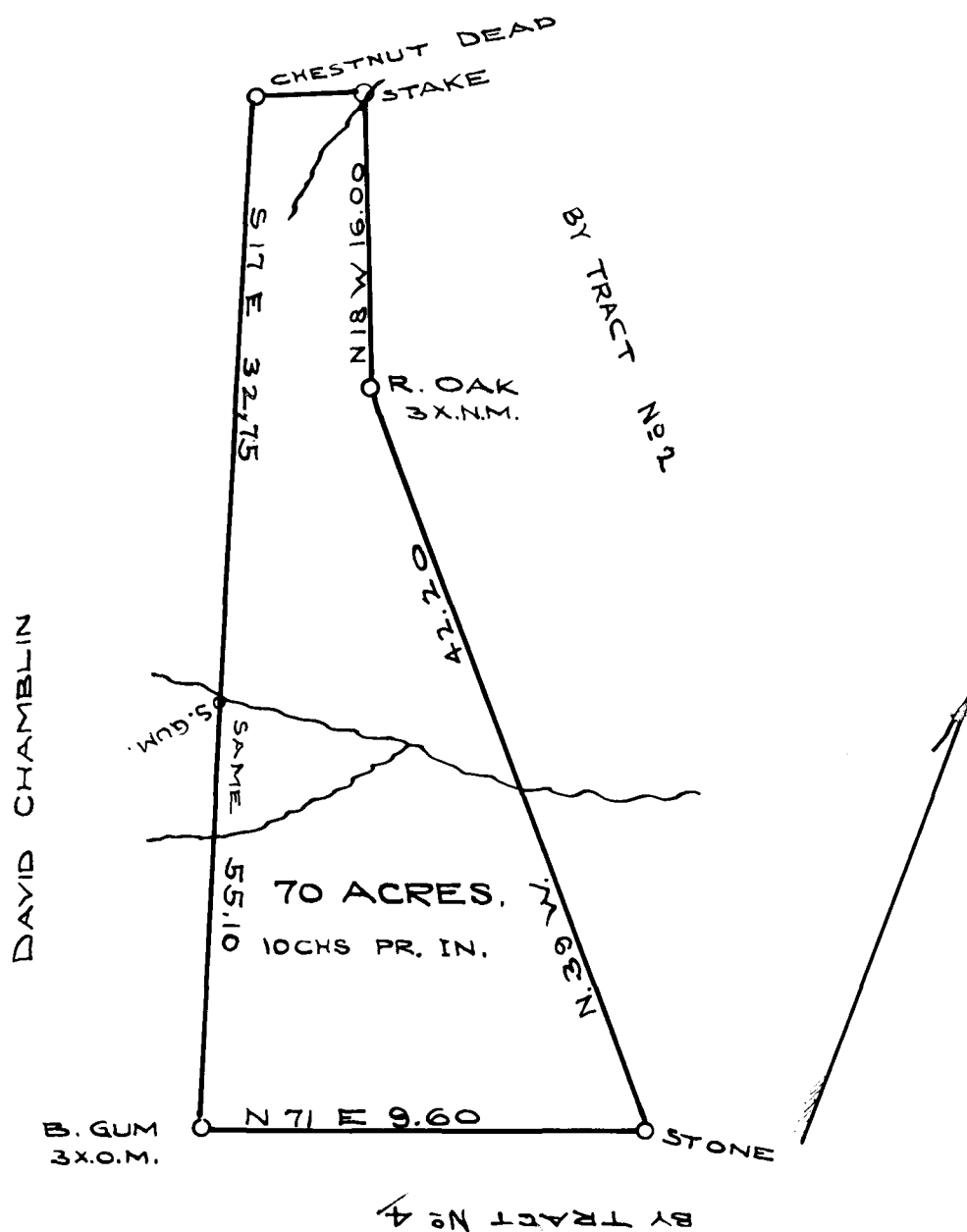


EX PARTE  
ELLE L. CASTLEBERRY

D. CHAMBLIN



TRACT NO. 3 FORMERLY  
APART OF HOMESTEAD.

SPARTANBURG COUNTY, SO. CA.

THE ABOVE PLAT IS A TRUE REPRESENTATION OF A  
TRACT OF LAND SURVEYED FOR THE HEIRS OF WM  
WRIGHT, DECEASED IT HATH SUCH SHAPES AND FORMS  
AS ABOVE LAID DOWN, CONTAINING 70 ACRES, MORE  
OR LESS.

R. MARTIN, S.V.