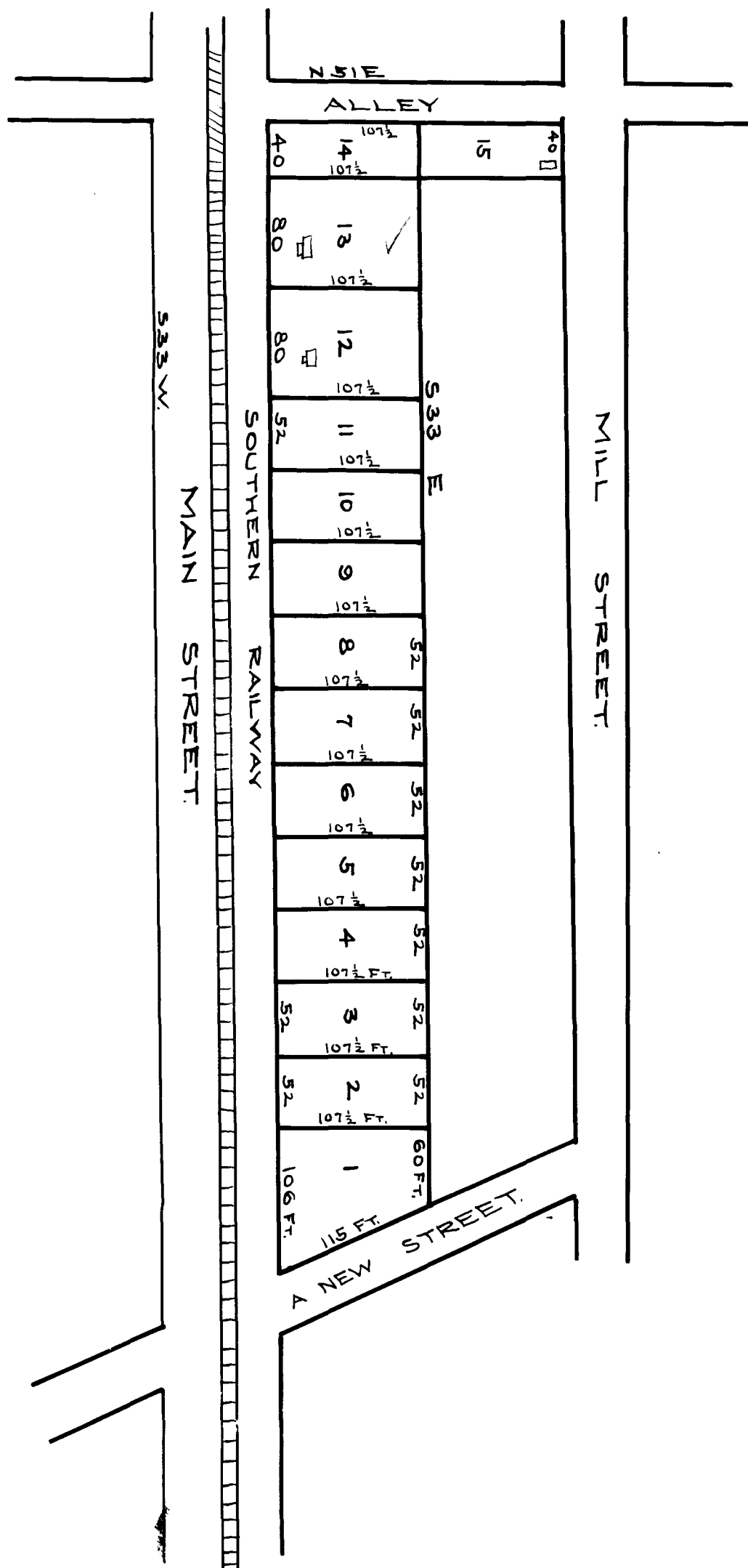


EX PARTE
W. S. HEAVENOR



I CERTIFY THAT THIS IS CORRECT REPRESENTATION OR PLAT OF LOTS LAID OFF FOR W. S. HEAVENOR JULY 10TH 1910 IN THE TOWN OF LANDRUM, S.C.

T. C. MILLS, SURVEYOR.

REGISTERED, CERTIFIED & EXAMINED DEC. 15TH 1910