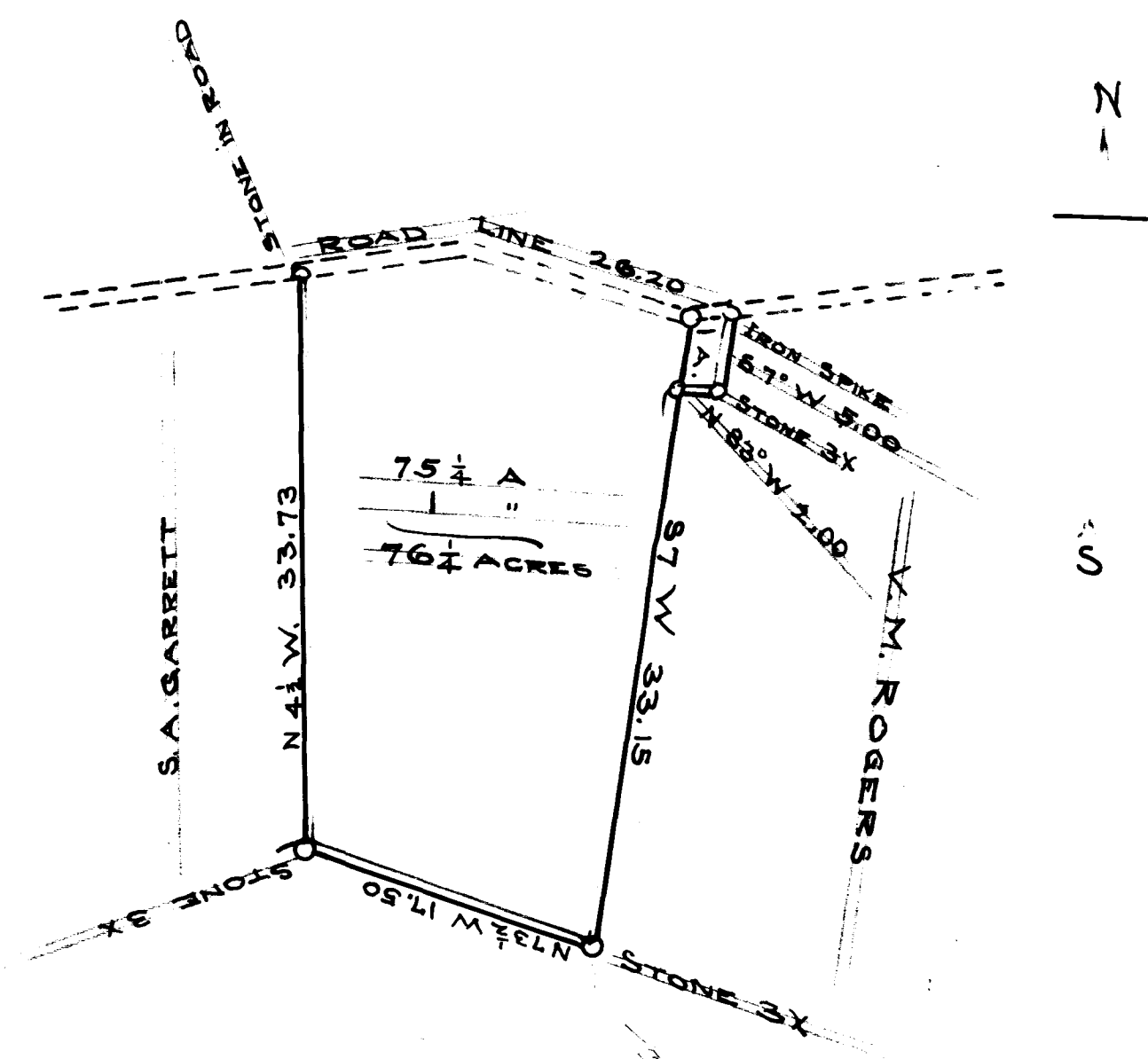


✓30

EX PARTE
JAS. LANHAM ROGERS



SCALE 10 CH. PER INCH.

STATE OF SOUTH CAROLINA
 COUNTY OF SPARTANBURG.
 Y.M. ROGERS
 TO
 JAS. LANHAM ROGERS

75 1/4 ACRES COPIED
 1 ACRE SURVEYED BY
 ME FEB. 24, 1911.
 S. G. ANDERSON
 SURVEYOR

REGISTERED, CERTIFIED & EXAMINED MARCH 21-1911