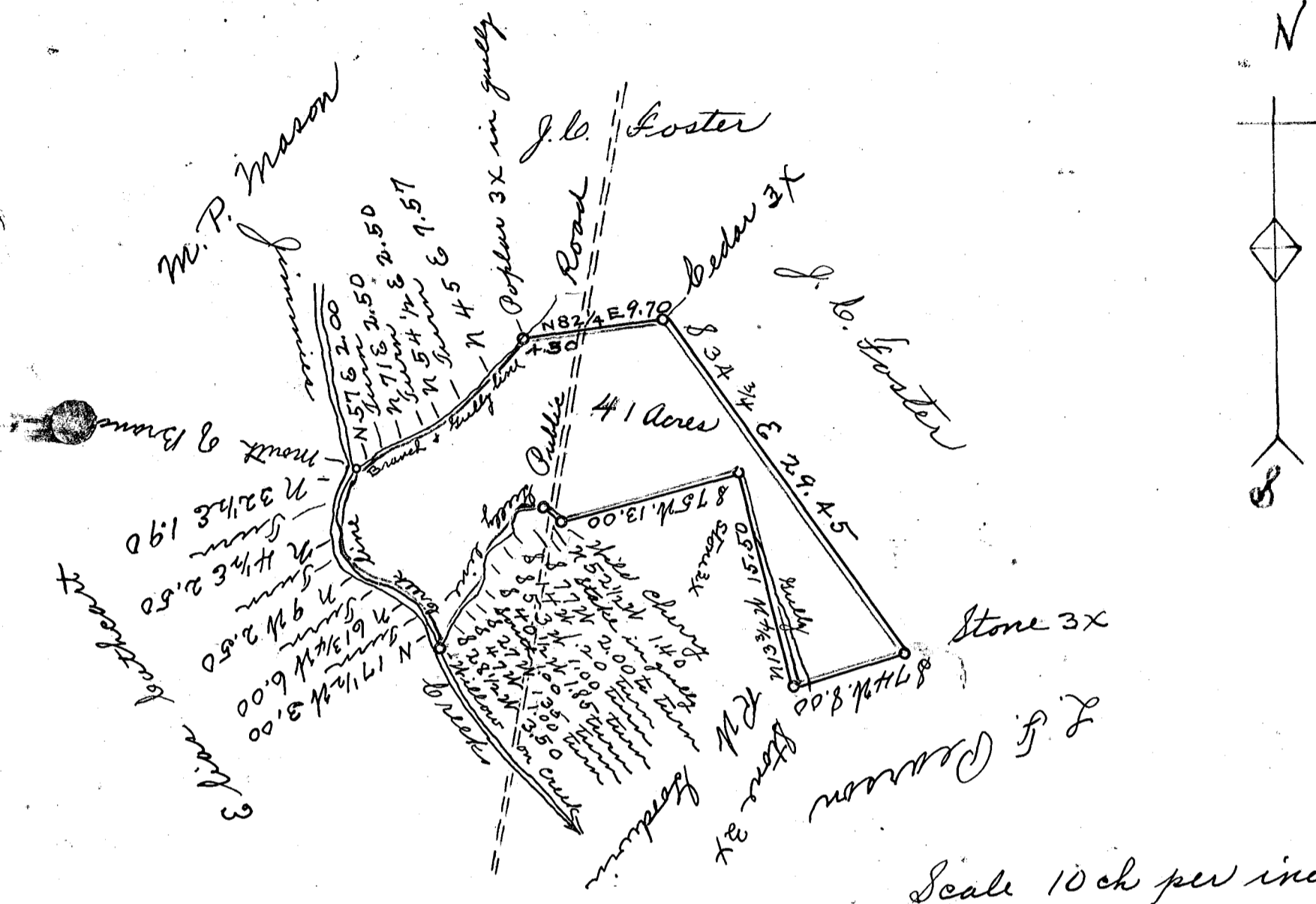


231

EX PARTE
BEN WEST.



State of South Carolina }
County of Spartanburg }

The above plat represents that portion
of Jim Nesbitt est. belonging to Ben West.
containing forty one acres, more or less.
Survey completed and division made
Aug. 28-1907.

S. G. Anderson
Surveyor.

Registered, certified and examined January 18-1911