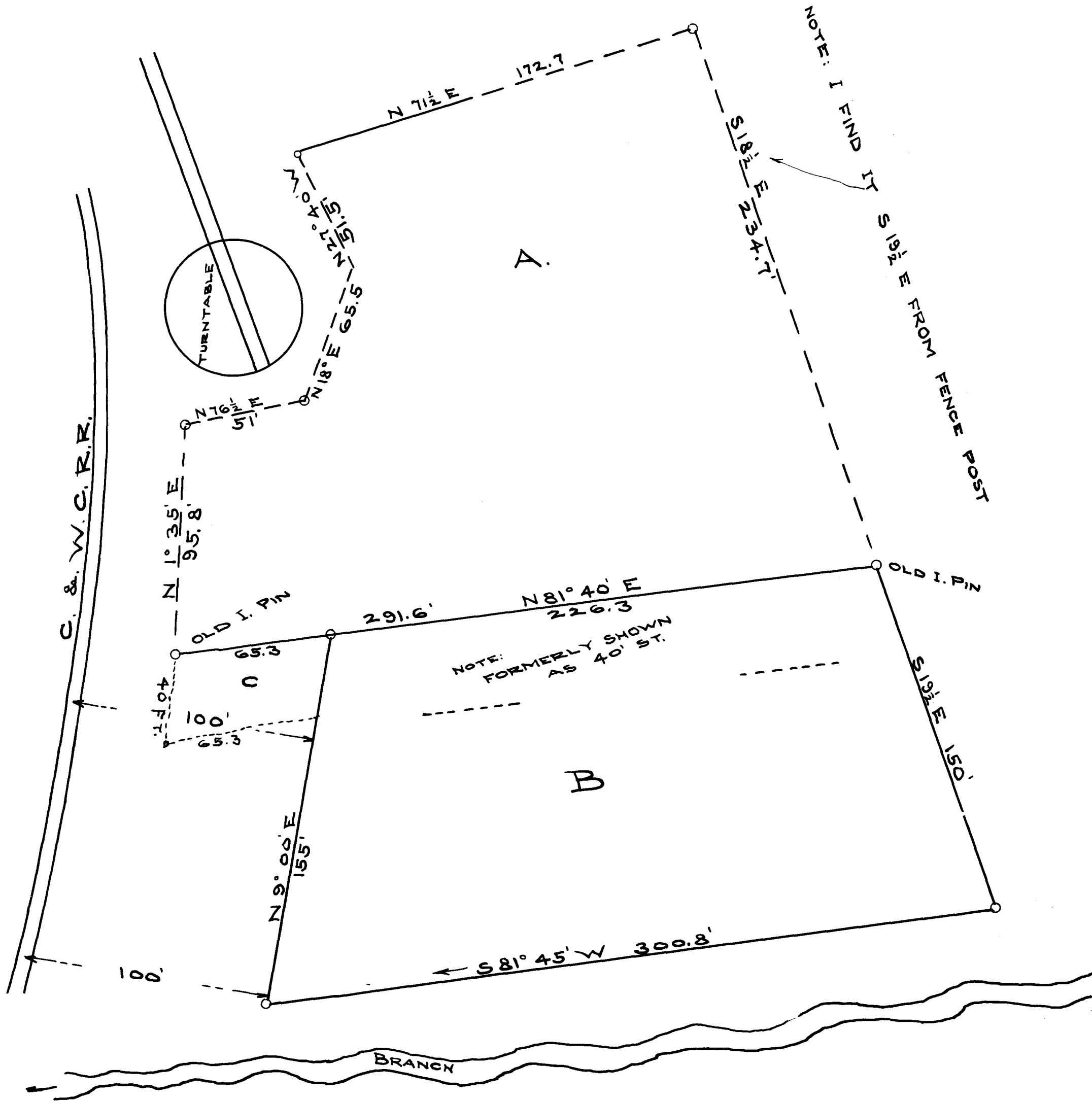


EX PARTE  
G. S. FITZSIMMONS



Survey of lot being transferred from J. A  
 & W. P. Irwin to G. S. Fitzsimmons, City of  
 Spartanburg. Dotted lines A are platted from  
 old plat. Heavy lines B. surveyed by me May 1911  
 H. Stirling, C.E.

Scale 1 in. = 40 ft.  
 Registered, Certified & Examined May 29-1911