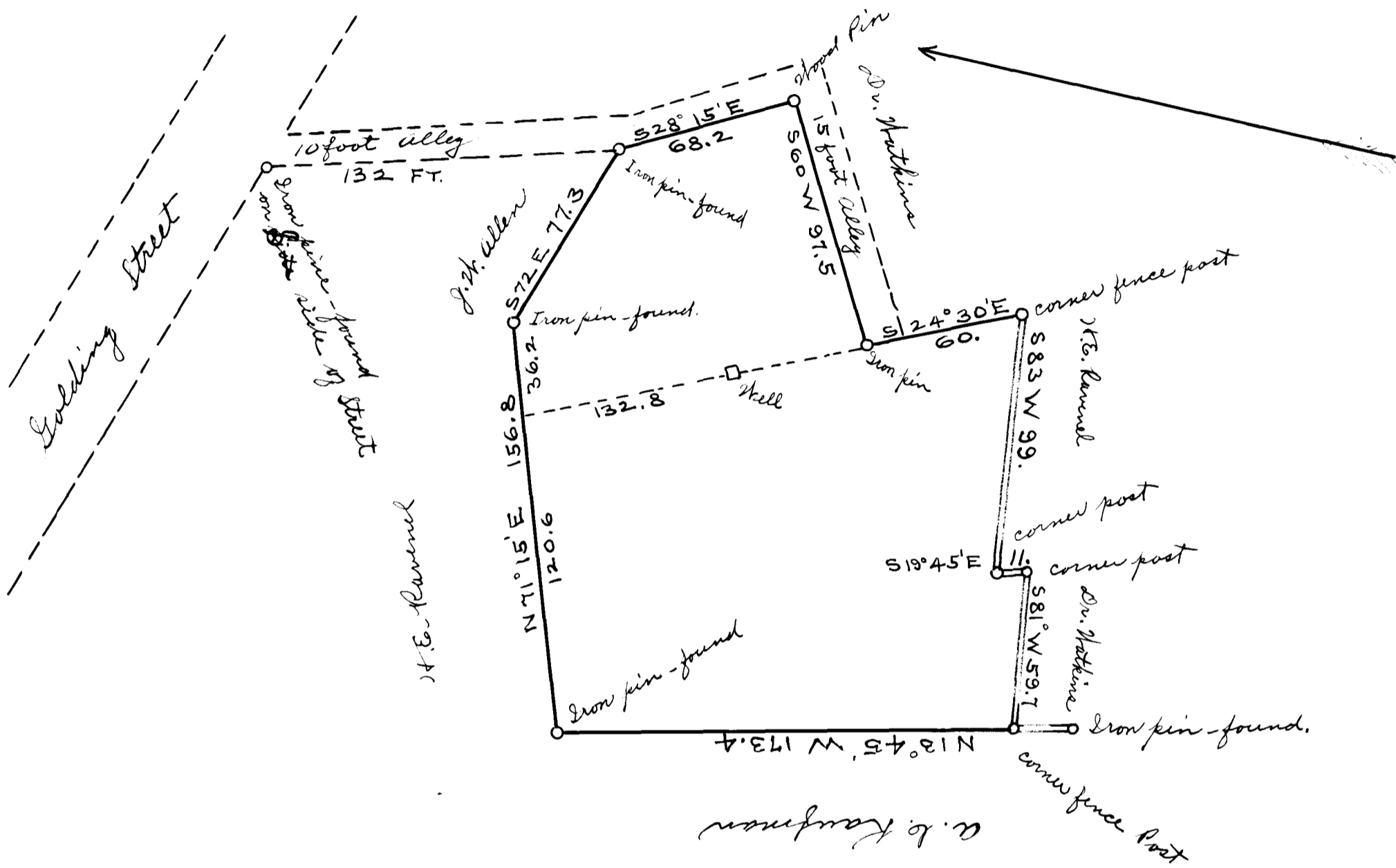


Ex Parte
Spartanburg Graded School.



This plat represents a lot in the City of Spartanburg, S. C. near Oakland Avenue and Golding Street - and is part of a lot intended for a City School. The double blue lines show the locations of a fence which we observe as the line.

Surveyed at the request and with the assistance of M. O. Gentry this March 10-1911.

J. H. Harris
Surveyor.

Registered, Certified & Examined May 30-1911.