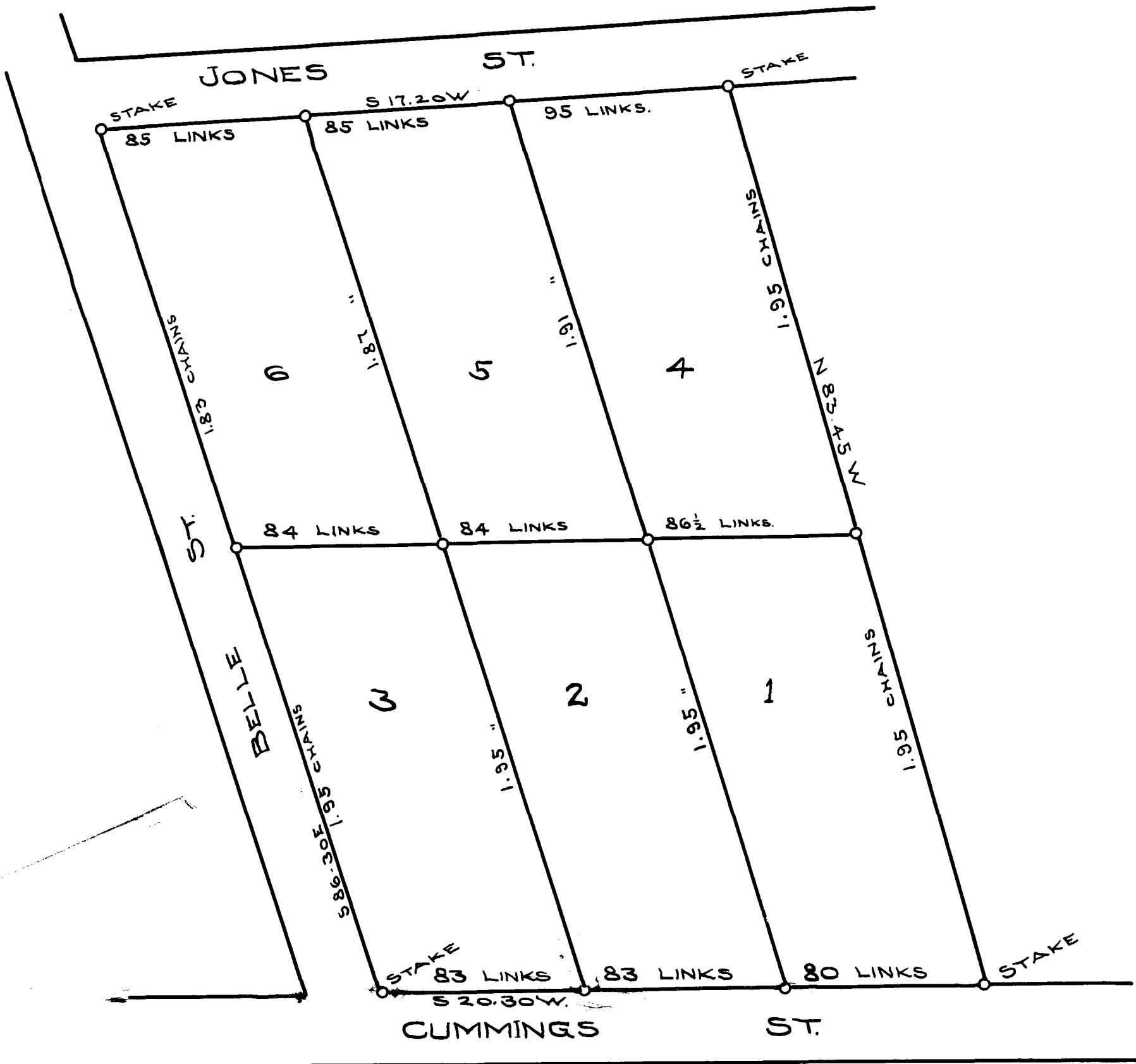


56

EX PARTE

C. C. SCOTT



PLAT OF REV. C.C. SCOTT'S PROPERTY

SPARTANBURG, S.C.

SUBDIVIDED BY T. L. SHIPPEY, ENGR. & SUR.

JAN. 16. 1908

SCALE 1 IN = 1/2 CHAIN.

Registered, Certified & Examined August 18-1911