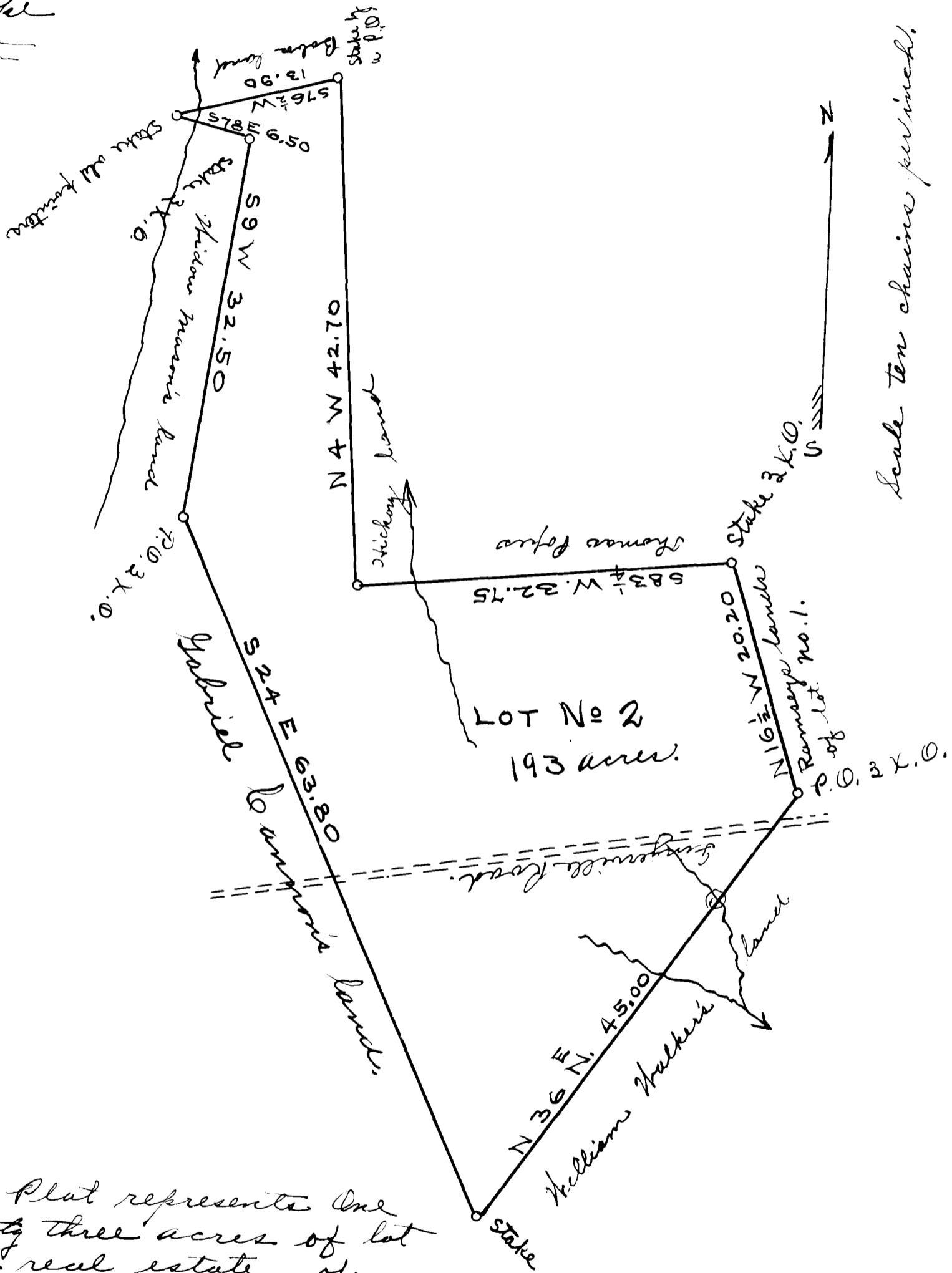


Ex Parte

Lynthia Bradford, dec'd.

Ex Parte

Thos. Pope



Scale ten chains per inch.

The above Plat represents One hundred & ninety three acres of lot No. 2, part of the real estate of Lynthia Bradford, dec'd. Surveyed October 7-1858.

(Signed) John Epton
D. S.

Registered, Certified & Examined October 31-1911