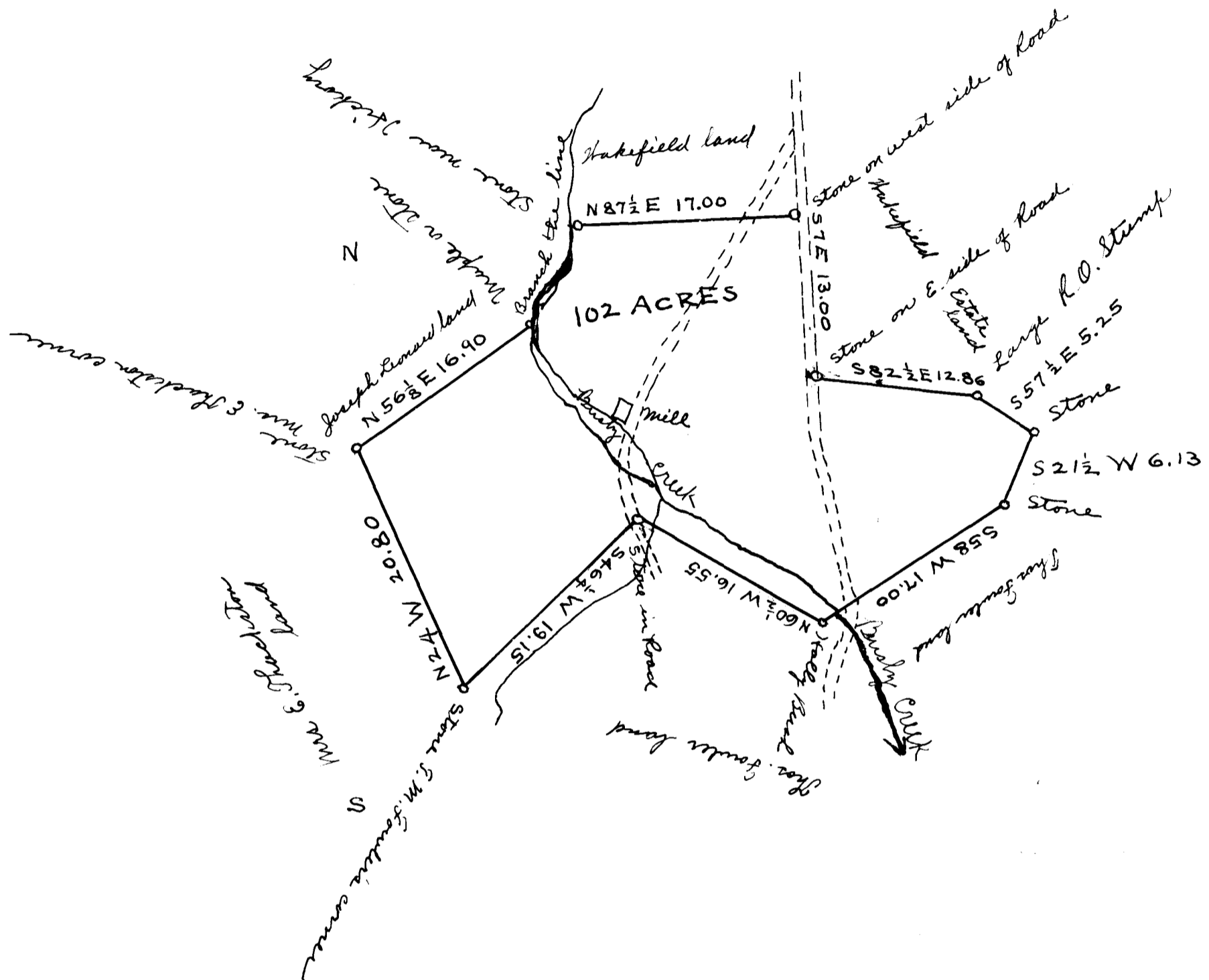


Part  
Estate of Mrs. E. A. Waters, dec'd.

Part  
George Briggs.



The above Plat represents Lot No. 15 of the Estate of Mrs. E. A. Waters, dec'd. and contains 102 acres more or less in the State of South Carolina, County of Spartanburg on both sides of Brushy Creek waters of South Tyger River about 12 miles from Reidville.

Surveyed this 15<sup>th</sup> day of Feb. 1894 by order of —  
 J. W. Harris  
 Surveyor

Registered, Certified + Examined October 10<sup>th</sup> 1911